

Kings' Park – Retford Management Plan 2026-2027



Contents

Kings' Park – Retford Management Plan 2026-2027	1
Executive Summary	4
Previous Plans	4
Vision Statement for Kings' Park	5
Access Statement	5
Section 1 - Park Overview and Heritage	6
Local Area Profile.....	7
Local Area Map	8
Site Information.....	9
Site Introduction	10
Site Map & Facilities:	11
History and Heritage.....	13
Significant Features	17
Section 2- Exploring the Park:	19
Area A – The Rose Garden	20
Area B – The Rock and Water Gardens	21
Area C– The Floral Display Garden and Circular Pond	22
Area D –Goodwin Hall Gardens	23
Area E – The Sports Area.....	24
Area F – West Retford Hall Field and Performance Area.....	25
Area G – The Children's Play Area.....	26
Area H – Splash Park.....	27
Area I– The Wildlife Garden	29
Area J The River Idle Field.....	30
Area K– The Celery Field Youth Activity Park	30
SOAR Analysis	31
Site Ecology	36
Community Events.....	38
Evaluation of Events	39
Marketing & Communication	41
Environmental Performance Assessment	42
New in 2025.....	45
You said, we did.....	49
Section 3 - Delivering the Vision:	50
Aims and Objectives	51
Aim One - To encourage existing users and new visitors to Kings Park	51
Aim Two - Increase dwell time when visiting the park	51
Aim Three - To actively encourage all sectors of the community to play a positive role in the use and development of Kings Park.	52
Aim Four - To encourage the use of Kings Park based on equal opportunity principles.	52
Action Plans.....	54
Financial Resources	60
Staffing Resources.....	61

Structure	61
Operational Maintenance Schedules.....	62
Section 4: Review and Supporting information	63
Policy Context	65
Supporting documentation and information items	66
Contact us.....	67

Executive Summary

Bassetlaw District Council is committed to providing high quality parks and open spaces throughout the district. This commitment has transformed the parks and open spaces after investments made into the facilities have often involved pioneering new developments and improvements across the service. The improvements have enabled the Council to apply for Green Flag Awards for its two main town centre parks.

Kings' Park in Retford has been successful in achieving the Green Flag Award status since 2008.

The park is managed and maintained by Parks and Open Spaces within Leisure and Wellbeing Services, led by the Environment & Energy Portfolio.

This management plan has been written as a working document to ensure the park continues to develop and evolve with the needs and expectations of the public. It enables the Council and partners to keep focused on future strategic aims and aspirations, as identified within both management and development planning for the park.

To ensure the plan retains its value as a current working document, it will be updated and amended annually to reflect developments and changing priorities.

This plan was updated in January 2026.

Previous Plans

This management plan builds upon the lessons learned from previous plans and supersedes them. Past consultation with park users, groups, organisations, and others with a vested interest in the park's future, has consistently shaped development since a significant report proposing improvements was produced in 2000 and a Strategic Development Plan commissioned in 2013.

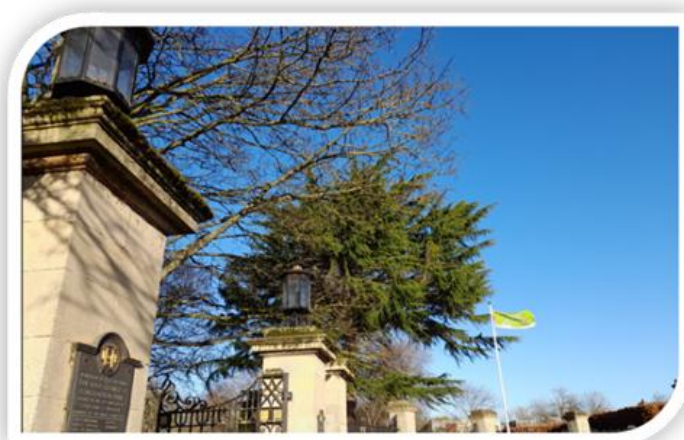
It demonstrated that Kings' Park is valued on a grass roots level as a multi-use recreational green space and resource for all communities in and around the town of Retford.

Vision Statement for Kings' Park

To inspire pride and wellbeing in Retford by nurturing Kings' Park as a vibrant, inclusive, and climate-resilient green heart of the town celebrating its heritage, enhancing its diverse landscape, and strengthening its role as a flagship destination for recreation, nature, and community life in a changing environment.

In support of Bassetlaw District Council's 2040 Vision and the aims towards a Healthy District:

"Encouraging residents to be more active in green spaces through walking, cycling and physical activity in the Council's parks and open spaces."



Pictured above: Entrance gates to Kings Park from Chancery Lane.

Access Statement

Bassetlaw District Council is committed to meeting its responsibilities under the Equality Act 2010 by making Kings Park easier for everyone to use.

Many of the paths in the park have already been improved with hard surfaces or compacted gravel to make them more accessible. As part of an ongoing programme of upgrades, the Council will continue to make reasonable changes to improve access to the park and its facilities.

If the Management Plan shows that some facilities cannot be made accessible through reasonable adjustments, the Council will plan for fully accessible replacements and look for funding as those facilities reach the end of their useful life.

Section 1 - Park Overview and Heritage

Section index:

- **Local Area Profile**
- **Local Area Map**
- **Site Information.**
- **Site Introduction**
- **Site Map**
- **Facilities**
- **History and Heritage**
- **Significant Features**

This section offers a clear and structured overview of the park, it begins by setting the scene with its location and access points (**Local Area Profile & Map**), then introduces the site's character and layout through **Site Information, Site Introduction**, and a detailed **Site Map**. Visitor experience is supported by outlining available **Facilities**, ensuring accessibility and comfort. The **History and Heritage** component brings the park's story to life, exploring its origins and cultural significance, while **Significant Features** showcase the distinctive elements that define its identity and make it a destination worth visiting.

Local Area Profile

Retford is an East Midlands market town, situated 31 miles north of Nottingham and 23 miles west of Lincoln.

Retford forms the second largest settlement in the district of Bassetlaw with a population 21,740 (2021 census).

Two prominent watercourses, the River Idle and the Chesterfield Canal run through the centre of the town, adding to its character.



Pictured above: Retford War Memorial in Market Square.

The town has a 750-year-old history as a market town, having been granted its Royal Charter by King Henry III in 1236. When permission to hold a fair was granted however, the borough of East Retford was established even earlier having been founded in 1105 by Henry I to collect tolls from traveller's crossing the River Idle.

Retford was reformed by the Municipal Corporations Act 1835 and then remained a municipal borough until 1974 when it was merged into the Bassetlaw district.

Prominent landmarks within the town include a recently refurbished market square, with its war memorial overlooked by an ornate Victorian-style town hall.

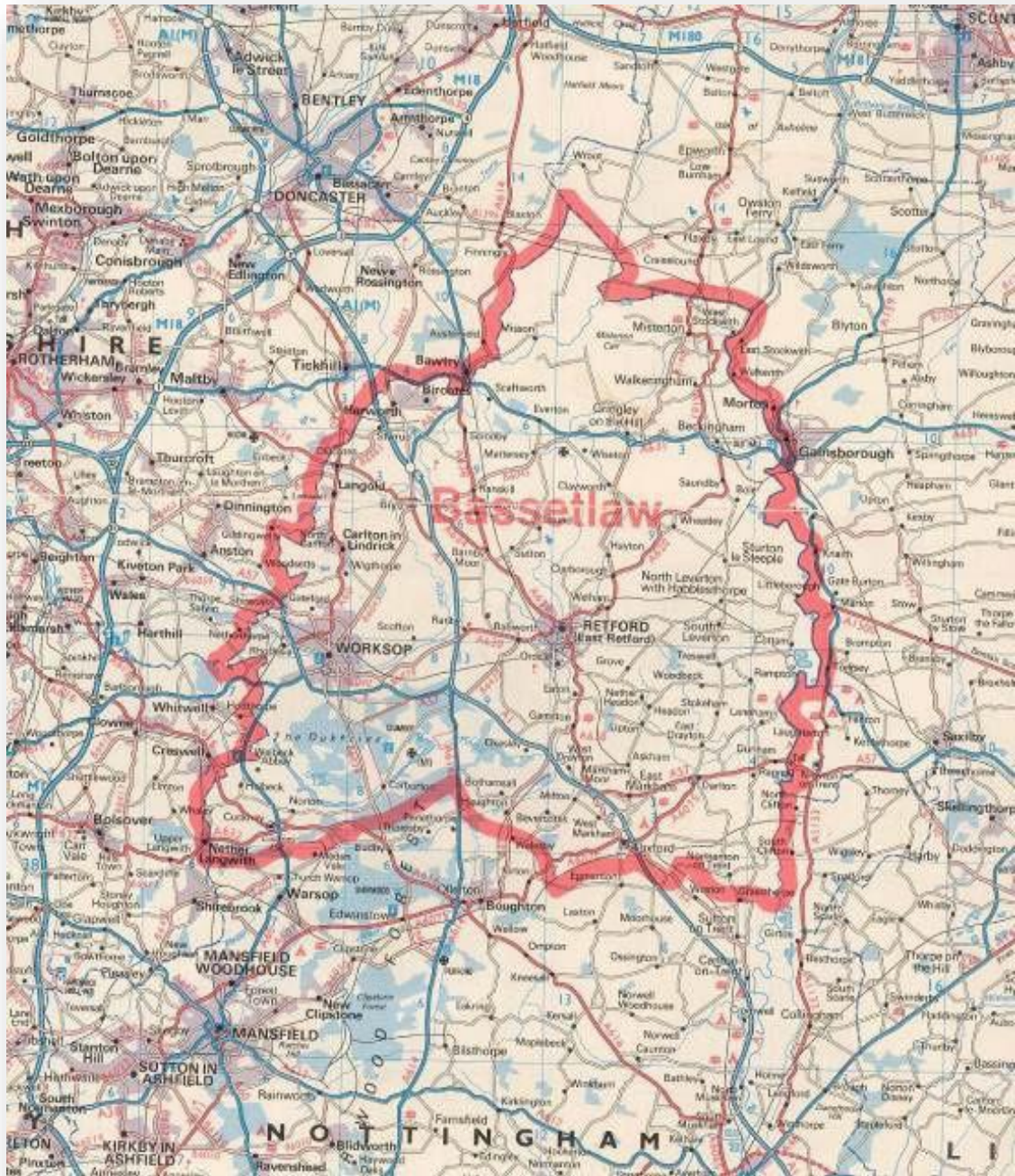
St Swithun's Church is fronted by Cannon Square, which accommodates a cannon captured from the Siege of Sebastopol during the Crimean War, also contributing towards the town's heritage.

Retford has a strong economy mainly consisting of light industry. The town itself is an important commercial centre for the local area with supermarkets, many independent shops, and a market every Thursday, Friday, and Saturday.

In recent years, Retford has seen a substantial population growth with the provision of many new houses, with buyers attracted by Retford's convenient location for commuters.

Retford is conveniently served by the A1 trunk road and the A57, which links Retford to several towns and cities. Retford is served by major rail lines, including the east-coast main line with travel to London's Kings Cross accessible within 1 hour 20 minutes.

Local Area Map



Pictured above: Ordnance Survey Map showing boundaries of Bassetlaw District.

Site Information

Address Details

Name: Kings Park,

Location: Chancery Lane, Retford, Notts, DN22 6DF.

What3words: Chancery Lane Entrance: ///exists.spoken.hood
Hospital Road Entrance: ///tile.music.park

Owned by: Bassetlaw District Council, Queens Buildings,
Potter Street, Worksop, Nottinghamshire, S80 2AH

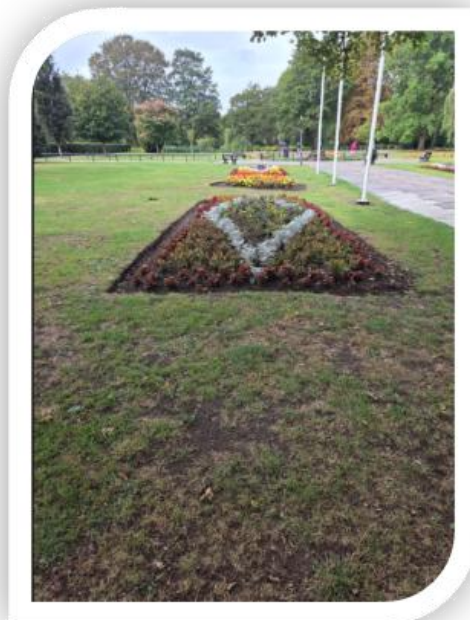
Managed by: Bassetlaw District Council, Parks and Open Spaces, Carlton Forest
Depot, Hundred Acre Lane, Worksop,
Notts, S81 0TS

Access Details:

Main entrance: Chancery Lane

Secondary entrance: Hospital Road

Other entrances off: Bridgegate Centre Car Park, West Street, West
Streetcar Park, The Carr, the Chesterfield Canal Towpath.



Pictured above: Flower bed on the left-hand side of the footpath leading from Chancery Lane entrance.

Site Introduction

Located just to the West of Retford Town Centre, the award-winning Kings Park sets the standard for green space provision across the district of Bassetlaw.

Covering an area of over 10 hectares, the park is divided into two distinct areas by the River Idle, which forms an integral part of the scenic landscape.

To the East of the river, the original Kings Park site is formally landscaped with garden areas, which accommodate specimen trees, formal hedges,

water features, seasonal floral display beds and well-maintained lawns.



Pictured above: View of flower beds adjacent to footpath leading to Chancery Lane entrance.

Facilities including a pavilion, tennis courts and a bowling green are also sited within this area and complement the garden landscapes to provide an ideal setting for relaxation and passive recreational pursuits. The land to the West of the River Idle was opened as

an extension to the original park. In contrast to the formal gardens, this area of parkland offers open green space, which is ideal for ball game activities such as football, cricket and rounders. Towards the northern boundary, parts of the green space are naturally banked, providing an amphitheatre setting for the new multi-use performance area. During winter, if snow prevails, this area becomes a magnet for the youngsters with sledges, proving that Kings Park is a park for all seasons.

A children's play area with a wide range of modern equipment and popular Splash Park is in this section of the park and over on the southern boundary, young people can enjoy the challenges of the 'Youth Activity Park', with its skateboard ramps and all-weather multi-use ball court.

In contrast to its play and recreational facilities, the western half of the Kings Park site accommodates a wildlife garden. Screened by mature trees and naturalised vegetation, this once derelict allotment site adjoins the Chesterfield Canal along its western boundary.

Site Map & Facilities:



Pictured above: Site map of Kings' Park showing layout and key areas within park.

Facilities

- Splash Park* (May-September)
- Kiosk & Public Conveniences*
- Children's Play Area
- Multi-Use Games Area
- Skate Park
- Multi-Use Performance Area
- Pavilion* (*Defibrillator location*)
- Formal Gardens
- Rose Garden & Community Garden

- Bowling Green*(Unused at present time)
- Tennis Courts x2*
- Wildlife Garden

*** Seasonal facility only**



Pictured above: Defibrillator situated on Pavillion building.

The Splash Park kiosk is open May to September and operated by a local business.

The Splash Park facility is open to the public from May to September from 10:00am to 6:00pm daily.

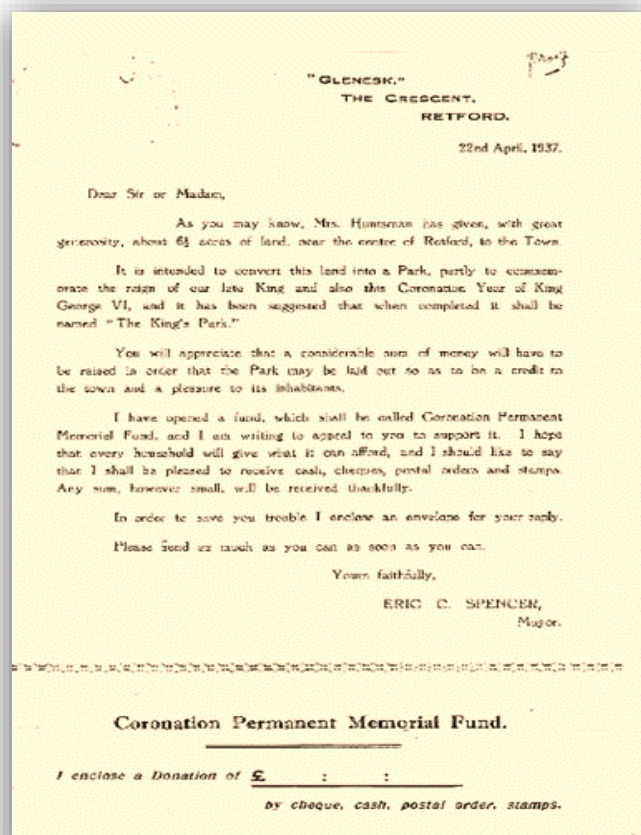
History and Heritage

Beginnings of the park

Retford's Kings Park is set within a rich, diverse, cultural, and archaeological landscape and is located immediately to the west of Retford Town Centre. Much of the landscaping throughout the west half of the park dates to the 19th century, with open vistas, lawned areas, tree belts and specimen trees located throughout.

The site for the original park, which occupies the land from Chancery Lane to the River Idle, was donated by Mrs. M J Huntsman of West Retford Hall in 1937.

A public appeal (see below copy of a letter seeking support) by the Borough of East Retford raised £2,000 (equivalent to about £170,000 today) towards the estimated cost of £8,000 (equivalent to about £683,000 today) to develop the park.



Pictured above: Copy of the Mayor's letter appealing for public donations to build the Park dated 1937.

Due to its low-lying nature, the land was raised between 1937 and 1938 using the town's refuse with landscaping on top.

The design and costing for the park were provided by Mr. H W Tee, who was the Borough Engineer and Surveyor for the Metropolitan Borough of Woolwich.

Quotations were received from local companies including Mr. B R Neale, Mr. G F Gyles, Messrs. Curtis and Howell Ltd and W Neal and Son.

Some of the most expensive items at the time were:

- Provide and lay Bowling Green: £488.50.
- Provide and lay natural stone in rockery and plant with rock plants and alpines: £754.80.
- To provide and erect thatched pavilion: £427.82.

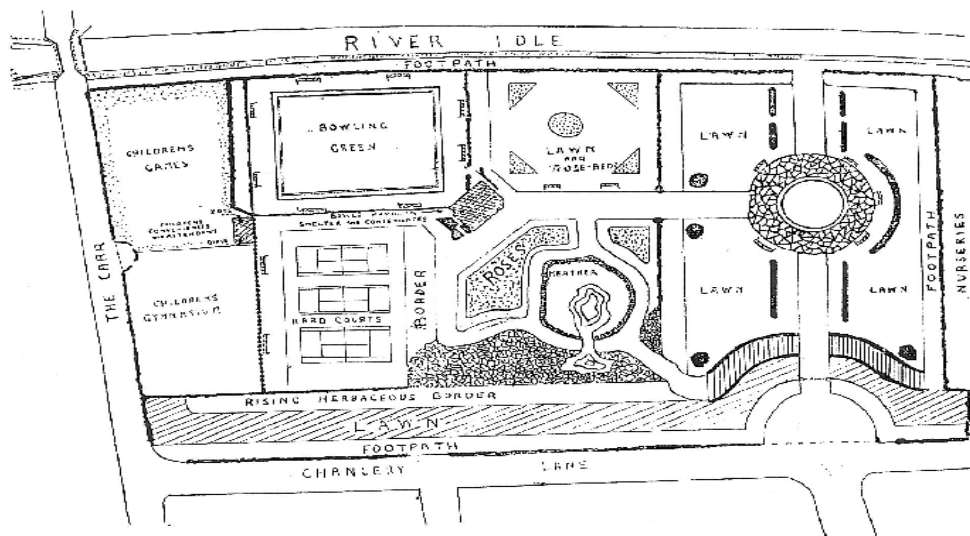


Pictured above: Plaques regarding the opening of Kings Park, situated on the Chancery Lane entrance.

The layout for the park is very similar to the present design, apart from the children's games and children's gymnasium, which were sited on the now extended car park for ASDA.

Suggested equipment for the gymnasium included: swings, a chute, a

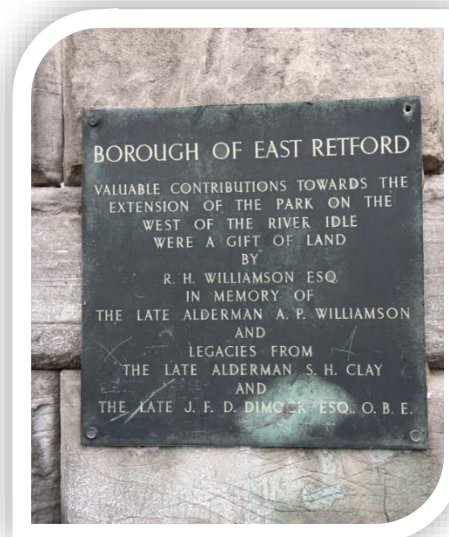
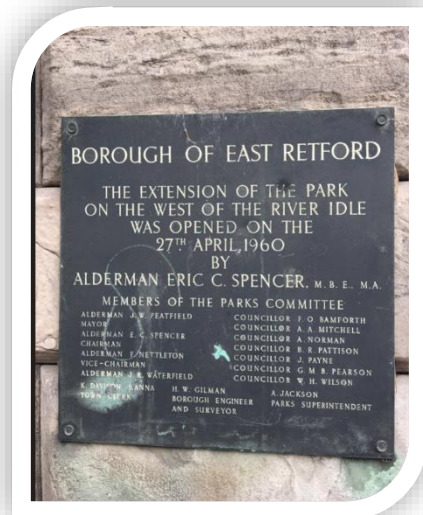
merry-go-round and a jungle-gym. For the children's games area, it was suggested that the area should be left grassed for the children to romp about and play ball games with an area for a sand pit.



Pictured above: Copy of original plan drawing showing the layout of the park 1937.

Official Opening

The Park was officially opened on the 29th of June 1938 to commemorate the reign of King George V and the Coronation of King George VI. A further donation of the land by R H Williamson to the west of the River Idle allowed for an extension of the park, which was officially opened on 27th April 1960. Kings Park's central feature, the River Idle, followed the line of Carr Dyke within the Park, which represents the historic Parish boundaries of East and West Retford. The course of the Idle was diverted and canalised in 1777, when the Retford section of the Chesterfield Canal, designed by master engineer James Brindley, was constructed. canalisation was necessary, as the river would have been in close, or immediate proximity of the raised banks of the canal to the southwest of the park. Carr Bridge, which crosses the Idle within the Park, is thought to have been constructed at the same time as the canal as an access route associated with the construction of the canal.



Pictured above: Commemorative plaques towards the extension of the parks- formerly situated on Hospital Road entrance to the park but sadly were stolen.

Significant Features

West Retford Hall (built 1699, Grade II listed)

The oldest part of the park is that which immediately surrounds West Retford Hall. This was laid out in a rectangular plot on higher ground, perpendicular to both the former roadway that ran across the front of the hall to the North-West and the former course of the River Idle, now called Carr Dyke, to the southeast. The enclosure of 1774 saw the roadway stopped up and a new road built further to the North-West, utilising a former access to the old West Retford Hall (now the site of Trinity Hospital), this road being called Hospital Road. A series of outbuildings adjacent to the hall, including stables, were also constructed in this period, probably for George Brown Esq (also of Ordsall Hall).



Pictured above: Main façade of West Retford Hall

Boundary Wall



Pictured above: Boundary wall next to Hospital Road and Rectory Road.

The brick boundary wall adjacent to Rectory Road/Hospital Road was constructed in the early-19th century. 1826 saw the addition of a dower house (West Retford Cottage) in the southwest corner of the site for the widow of William Huntsman (of West Retford Hall).

Main Entrance Gates



Pictured above: Entrance Gates from Chancery Lane.

It was discovered that prior to the park opening in 1938 two large lanterns were intended to be placed on the main gate pillars. Funds were not available for the two main lanterns on the gate pillars at the time and these were never produced. Only two smaller gas lit lanterns were installed on the corner stone pillars for the opening of the park.

The decision was taken in 2013 by the Friends of the Park to complete the original project as intended.

A joint venture between Retford Civic Society, the Council and other local organisations secured the necessary funding to commission the manufacture of two new larger sized lanterns for the main gate pillars and restore the existing two lanterns to their former glory. The new lanterns included the theming of the lighting to ensure the use of the low energy bulbs resemble most prominent feature.

Celebrating Kings Park Heritage

Some elements of the rich and diverse heritage landscape on the east side of Kings Park, require upgrading to return them to a condition in keeping with and doing justice to their original quality when the park was first opened. This includes finding new 'park community' uses for The Pavilion and Bowling Green, which are now unused.

Section 2- Exploring the Park: (Areas, Analysis, and Innovations)

Section index:

- **Areas**
- **SOAR (Strengths, Opportunities, Aspirations, Results)**
- **Site Ecology**
- **Community Events, Evaluation of Events, Marketing & Communication**
- **Environmental Performance Assessment**
- **New in 2025**
- **You said, we did**

This section offers a clear overview of the park's current position and future direction. **Areas** highlights the distinct zones of the park and their purpose, while **SOAR** examines strengths, opportunities, aspirations, and results to guide improvements. **Site Ecology** focuses on biodiversity and natural habitats. **Community Events, Evaluation, and Communication** showcase how activities and feedback strengthen engagement. Sustainability progress is reviewed in the **Environmental Performance Assessment**, with recent additions and activities are celebrated in **New in 2025**. Finally, **You Said, We Did** demonstrate how input from Green Flag judging has shaped positive changes.

Area A – The Rose Garden



Pictured above: The Rose Garden.

King's Park's original rose garden consisted of triangular, rectangular and circular beds adjacent to the River Idle. This was removed in 2009. A new garden, constructed on the site of the original feature was designed by Bassetlaw District Council's Parks & Open Spaces Team and delivered with Nottinghamshire County Council's Landscape Design Team, it opened in 2010. This new design consists of a circular layout with segmented beds, crushed-stone paths, themed seating, and over 900 highly scented roses, including climbers on ornate metal archways and carved stone rose centrepiece. It also features from the Rotary Club of Retford an analemmatic sundial.

Area B – The Rock and Water Gardens

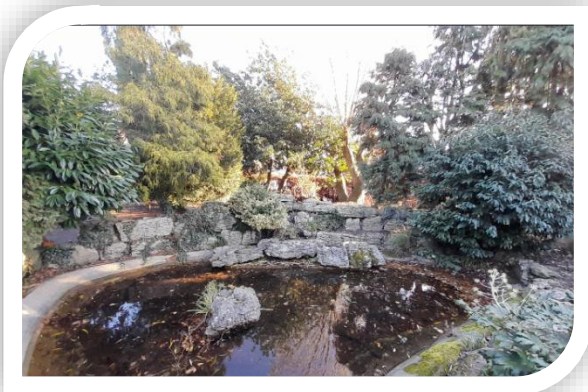
The Rock and Water Gardens offer a quiet, tranquil part of the park away from the main pathway through the park.

In 2005, Bassetlaw District Council's Parks & Open Spaces and Landscape teams restored Kings Park's rock and water garden. The pond, which was losing water due to fractures in its concrete base, was drained, de-silted, repaired, refilled, and replanted with aquatic and marginal species. The adjacent limestone rock garden was reclaimed, with key rocks repositioned and beds replanted with conifers, alpiners, and herbaceous plants to frame the water feature. The scheme also added traditional furniture, improved footpaths and shrub borders, and introduced new bulb displays and a water-reflective winter-stem border for year-round interest.

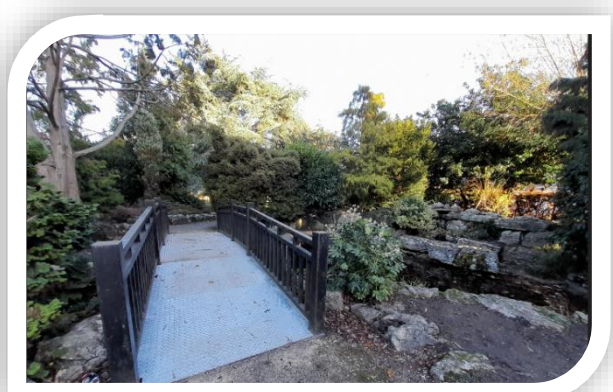


Pictured above: The Rock and Water Garden

Future projects will focus on essential maintenance and repair works to preserve this iconic feature, ensuring it remains a cherished attraction for generations to come



Pictured above: View of the smaller section of the pond from the bridge.



Pictured above: The bridge over the pond.

Area C– The Floral Display Garden and Circular Pond

In the autumn of 2000, the District Council Landscape Team started work on the regrading and re-seeding of Kings Park's formal, ornamental lawns. This large-scale project involved the distribution of 600 tons of imported topsoil to address a settlement and undulation problem, which had previously devalued the visual impact of seasonal bedding displays. In the spring of 2001, realigned seasonal display beds were re-cut into the newly established lawns. These were complemented in 2003 by the reintroduction of a traditional style herbaceous border.



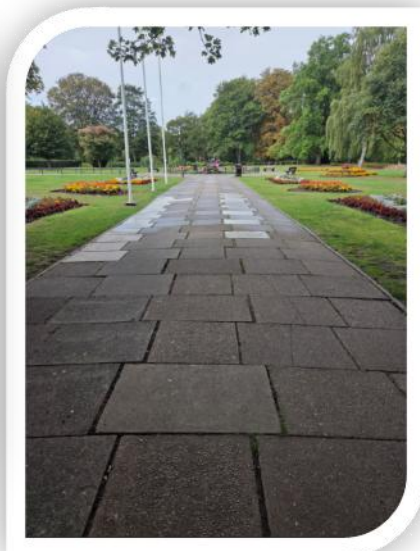
Pictured above: The Floral Display Garden with the pond in the centre.

The Floral Display Garden is visible from the gates offering an open and inviting aspect with regular grounds maintenance operations carried out to a high standard.

The Circular Pond serves as a focal point in this area of the park, the future projects will ensure the longevity of the pond and include a sculpture provided by Retford Civic Society.



Pictured above: The circular pond.



Pictured above: The entrance path adjacent to the Floral Display Garden.

Area E – The Sports Area

This area consists of two seasonal sports facilities, a contained bowling green (currently unused) and refurbished tennis courts.

The bowling green is within an area enclosed on all four sides by mature formal hedges.

This part of the site, which also accommodates a large herbaceous and shrub border, has been enhanced by significant improvements to its paths, furnishings, fences, and gates.



Pictured above: Tennis court.

The installation of new gates now allows the closure of the facility during the closed winter season, diverting pedestrian traffic along a new footpath adjacent to the tennis courts.

The once dilapidated tennis courts have been extensively refurbished with a colour coated tarmac surface over a reconstructed sub-base, enclosed by replacement perimeter fencing.

Area F – West Retford Hall Field and Performance Area

This area of the park can boast a number of mature specimen trees laid out amongst an open area of grassland, allowing for the site to be used for informal recreation (ball games etc.) and for small community events and organised activities.

Renovation works in 2010 improved the brick-walled boundaries along Hospital Road and Rectory Road, with mowing reduced to create wildlife habitat margins.

At the eastern end, a modern performance area was built within a natural amphitheatre, replacing the old concrete bandstand. Following community consultation in 2012, the new facility was designed for optimal viewing from the grass bank and now hosts a wide range of events, from performing arts to live music.

The area benefits from CCTV coverage across most areas with live monitoring for enhanced security.



Pictured above: Performance area for staged events such as 'Panto in the Park' shown above.

Area G – The Children’s Play Area

In 2021, a bespoke Mayflower Pilgrim Ship-themed play structure was built, linking to the 400th anniversary of the Pilgrims’ voyage to the new world (America) in 1620.

This popular play facility combines play value with educational panels and signage to encourage a learning aspect about the pilgrims and is fully accessible for inclusive play.

The Mayflower ship complements existing equipment and is a standout feature visible from afar.



Pictured above: Various images showing different design elements added into the Mayflower play equipment.



Pictured above: Photo of the official opening of the new roundabout installation (Oct 2017).

In 2017, a ground-level “Ability Whirl” roundabout was added through community fundraising, offering wheelchair access and space for carers to join the experience. All play equipment and safety surfacing meet compliance standards and are accessible and undergo regular inspections.

The play area field is bordered by the Carr Dyke watercourse on its eastern edge and accommodates a number of mature managed trees mainly around its perimeters.

Area H – Splash Park



Pictured above: Splash Park Area.

This area of the park is one of the most popular areas of the park visited, by young people and families, particularly from May to September following the installation of the new water splash park facility in 2016. The facility is recognised as a significant enhancement both for the park and for the local area.

The themed water/sand play facility with its mix of multiple water jets and sprays, small paddling area, push button directional water guns with water bucket drops and play operated water turning wheels such as the Archimedes screw complements the existing equipped play area alongside. It was designed to be accessible for children of all ages and abilities, with brightly coloured safer surfacing defining different zoned areas for play.



Pictured above: Kiosk and toilets building within the play area.

Included in the development was the construction of a kiosk/WC building, which was shortlisted as a finalist in the Local Authority Building Control (LABC) Building Excellence Awards 2017 for the best public service building. It was recognised for its innovative design, sustainability and improving building standards. The kiosk and toilets are open daily during the summer months when the splash park is open for use.

Both the kiosk and public toilets are managed and maintained by a private kiosk operator under a licence agreement.

A number of picnic tables and furnishings made from recycled plastics have been installed on the site to provide areas for sitting and relaxation.

The development of this area also included the installation of a new CCTV camera that is linked into the town centre system for monitoring and recording purposes. The camera covers the play area and surrounding areas including the nearby performance area, giving greater reassurances to users of the park.

Containing no significant landscape features this side, as with most of

Kings Park's western side, it consists of regularly maintained open grassland, again catering for informal recreational use.

Area I – The Wildlife Garden

By design, this area differs considerably from the parks high-amenity landscape features to the east of the River Idle.

In order to encourage the wildlife, its main body of vegetation is left to grow naturally with maintenance restricted to occasional pruning operations to facilitate access, tree works and litter collections.

The wildlife garden is at its most interesting during the spring nesting season and then again between September and November when native species display rich autumn leaf colour and a range of winterberries



Pictured above: autumnal photo of the wildlife garden area.

Area J The River Idle Field

The River Idle Field remains a maintained open space rather than a developed area, forming the park's largest feature.

This accessible, level green space serves two key purposes:

Year-Round Use: Provides a spacious environment for informal play and recreation.

Event Hosting: Accommodates organised community activities and events on specific occasions.

The site continues to be maintained to the required standards and the Implementation of Dog Control Orders helps promote responsible pet ownership.

Area K– The Celery Field Youth Activity Park

In 2002, the first phase of a major scheme transformed the underused site into a recreational facility for older children and young people.

A multi-use games area (MUGA) was installed, followed by the completion of the Celery Field Youth Activity Park in 2003, featuring a bespoke concrete skate park and refurbished ramp.

Further improvements included a youth shelter, tarmac access path. The skate park is now a popular hub for social interaction and wheeled sports. While surfaces are often tagged, graffiti remains non-offensive.

In 2016, CCTV and lighting were added, linked to the Town Centre system, enhancing safety and security.



Pictured above: Use of the Skate Park Area.

SOAR Analysis

Soft Landscaping:

Strengths

High visual impact and strong visitor appeal – vibrant seasonal displays attract visitors.

Clear structure and themed planting areas enhancing navigation and design cohesion.

Strong horticultural heritage showcasing skilled planting design.

High biodiversity potential.

Goodwin Hall Gardens adjoins the arboretum, part of the Kings Park Tree Trail, offering opportunities to explore a diverse collection of trees and learn about the park's natural heritage.

River Idle Field: Large open space suitable for various activities, offering flexibility for recreation and events.

Opportunities

Introduction of perennial or mixed herbaceous planting to improve sustainability. Enhanced educational and community engagement through workshops and working closely with local groups.

Pollinator-friendly planting supporting biodiversity initiatives.

Seasonal themes and curated display experiences to attract more visitors.

Aspirations

1: Create Sustainable, Resilient Planting Landscapes

To transition our parks toward long-term environmental sustainability by increasing the use of perennial and mixed herbaceous planting.

2: Become a Centre for Learning and Community Involvement

To position our green spaces as hubs for public education and community engagement through workshops, tours, and hands-on learning.

3: Champion Local Biodiversity Through Pollinator-Friendly Design

To enhance biodiversity by expanding pollinator-friendly planting and habitat creation.

4: Deliver Engaging, Seasonal Visitor Experiences

To curate seasonal themes and immersive horticultural displays that attract and inspire visitors.

Results

- Reduced annual maintenance and replanting costs.
- More resilient planting displays that perform across seasons and withstand weather extremes.
- Enhanced visual quality and consistency of beds throughout the year.
- Lower environmental impact through reduced waste, water use, and resource inputs.
- Increased visitor engagement and awareness of the park's natural heritage.

Hard Landscaping:

Strengths

Performance Area: Purpose-built performance space featuring a permanent roof, providing shelter and making it suitable for use in varying weather conditions.

Rock and Water Garden: Attractive ornamental focal point combining rock features.

Main pathway is adjacent to attractive flowerbeds offering a pleasant walk through the park.

Pathways are subject to an annual inspection to ensure safety and accessibility in the park.

Pathways, walls, and edging create clear navigation and visual structure.

Opportunities

Performance Area: Potential to host diverse community events beyond peak seasons.

Aspirations

Enhancement & Accessibility:

Position hard landscaping as a foundation for inclusive, safe, and visually appealing park design.

Achieve a balance between heritage character and modern functionality.

Create spaces that encourage social interaction, community events, and wellness activities.

Results

- Increased event attendance and community engagement.
- Increased visitor satisfaction and engagement.
- Enhanced safety and usability through regular upgrades.
- Recognition as a model for sustainable and inclusive public space design.

Built Heritage & Decorative Features

Strengths

Historical features: Bowling Green Pavilion, Bowling Green, The historic Chancery Lane entrance gateway with period railings and pillar-lanterns, extensive early 19th century brick boundary walling along Hospital Road and the boundary with the Chesterfield Canal towpath and West entrance gateway with stone pillars and gauged brickwork.

Attractive built heritage elements around original pond including footbridge.

Opportunities

Refurbish and repurpose the disused Pavilion. Subject to capital bid.

Aspirations

To create a multifunctional space that supports community engagement, heritage preservation, and modern recreational needs.

Results

- Increased visitor engagement and cultural tourism.
- Enhanced community pride and involvement in heritage conservation.

Recreation and Amenities

Strengths

The Sports Area: Central location within Kings Park ensures easy access for visitors and makes it a convenient spot.

Splash Park, The Children's Play Area, Performance Area: Equipped with CCTV coverage and an integrated help button, ensuring visitor safety and security during events.

Splash Park: One of the park's most visited amenities thanks to its vibrant design and interactive appeal.

Splash Park and Children's Play Area: Serves as a key focal point for recreation and community engagement within the park. Modern setup ensures a safe, accessible, and enjoyable experience for visitors of all ages, meeting current standards for play and leisure facilities.

Opportunities

The Sports Area: Collaborate with a local tennis group to establish regular training sessions on the court, involving an organised club can bring structured programming, improved oversight, and increased community engagement.

Aspirations

Partnership & Community Engagement

Collaborate with a local tennis group to establish regular training sessions on the court. Partnership could allow the group to manage bookings, monitor usage, and ensure fair access. Involving an organised club can bring structured programming, improved oversight, and increased community engagement.

Introduce innovative features to improve accessibility and sensory experiences.

Results

- Improved reputation of Kings Park as a destination for cultural and recreational activities.
- Sustainable usage of the performance space throughout the year.
- Increased participation in tennis and community sports.
- Improved facility management and reduced misuse.
- Enhanced reputation of Kings Park as a destination for organised recreational activities.

Site Ecology



Pictured above: Marginal vegetation at Carr Dyke.

Kings Park is a very important green corridor in the heart of Retford town centre. In the context of its location, Kings Park holds a very diverse assemblage of habitat types. The large combination of habitats, including semi natural areas, defines Kings Park as an important central 'green hub' within an urban environment that is largely hostile to wildlife.

With the exception of landscapes specifically managed for wildlife, it is likely that the overall value of Kings Park for wildlife could well exceed that of many areas of Retford's intensively farmed surrounding countryside.

The range of habitat types and features on site includes:

- Many mature parkland trees and other tree species producing nectar, pollen and feeding opportunities for invertebrates and birds along with nesting sites.
- Diverse flower and berry producing shrubbery with long seasons of availability.
- A wide range of nectar and pollen sources from planted bulbs and flowers.
- Aquatic habitats encouraging waterfowl to the site.
- The River Idle running through the site with mature riverside Weeping Willow trees and marginal vegetation offering scope for enhancement.
- An additional stream sized water body called Carr Dyke running parallel to the River Idle across the playing field.
- Medium sized pond with mature planting, shrubs and trees.
- Large expanses of short mown grassland (some less disturbed areas) as foraging opportunities for ground feeding birds.
- Areas of relatively undisturbed tall herb vegetation and mature trees in the park's wildlife area.
- A low disturbance area of newly regenerated woodland alongside mature oak trees.

Kings Park has been included within the Retford Conservation Area since 2012. This designation recognises the park as a place where built heritage, human history, culturally important planting schemes and wildlife can and do coexist. Greater public acceptance for accommodating and improving biodiversity outcomes increasingly allows park management to combine the

needs of wildlife and people without conflict. These opportunities will be exploited through an ongoing programme of adjustments to the overall management of Kings Park and will be detailed within the management plan.

Community Events



Pictured above: Dance Aerobic Sessions within the park.

Over the last few years, the Parks and Open Spaces Management Team have organised and staged community events and activities in Kings Park. These highly successful activities have supplemented those that have been run by other organisations and groups.

Bassetlaw District Council remain committed to promoting Kings Park as a valuable venue for community events and will therefore:

- Continue to support and promote establishment of annual events.
- Support and assist newcomers in establishing and developing regular events and activities.
- Stage successful District Council led events and activities aimed at raising public awareness of the park's value.

The Parks and Open Spaces Management Team will use the corporate Marketing Strategy (currently in development) to advertise Kings Park as a 'Green Arena' for educational establishment, community organisations and local businesses to stage events.



Pictured above: A pantomime on the Performance Area by TaleGate Theatre.

Evaluation of Events

Events and activities held at Kings Park are evaluated around the following five key areas:

1. Pre-event social engagement.
2. Actual day attendance.
3. Attendee satisfaction.
4. Press and media coverage.
5. Post-event brief.

1) Pre-event social engagement

Through the Council's Communications Team using social media channels to drive attendance, hype, and engagement to the event. Levels of interaction are monitored for tweets, likes, shares and comments, in addition to audience demographics and clicks per post. Anticipated attendance figures are then generated.

2) Actual day attendance

Achieved through on-site engagement and interaction with attendees, conversation platforms, social media mentions and questionnaires.

- By estimating actual attendance as well as audience profile and type.
- Through feedback from event participants on public interaction and trade levels.

3) Attendee Satisfaction

Attained through surveys, verbal conversation, social media and data acquired.

4) Press and media coverage

Level of coverage and presence in local press and media post-event. Measuring positivity against negative feedback.

5) Post Event Brief

Through event de-briefing sessions, to evaluate success and improve future planning, setup, and delivery.



Pictured above: Attendance at a community led event promoting Health and Wellbeing and Leisure in Bassetlaw.

Local organisations/schools/community groups within catchment area of Kings Park

Schools

- Bracken Lane Primary
- Carr Hill Primary
- Hallcroft Infant
- Ordsall Primary
- Retford Oaks Academy
- St Giles School
- St Joseph's Catholic School
- St Swithun's C of E Primary and Nursery
- The Elizabethan Academy
- Plus 15 further catchment schools.

Nurseries

- Shaping Futures
- All Aboard Nursery
- Claremont House
- Plus 10 other nurseries which serve the Retford catchment area

Community Groups and Clubs

- Retford Civic Society
- Retford Lions
- Muddy Fork (Wellbeing and Mental Health Support Charity)
- Goodwin Hall
- Inner Wheel Club
- Rotary Club
- Retford & District Archaeological & Historical Society
- Retford & District Photographic Society

Churches

- West Retford Baptist Church
- Retford Methodist
- Grove Street Methodist
- St Joseph's RC
- New Life Christian Centre
- St Swithun's

Medical Practices

- Kingfisher Family Practice
- Riverside Health Centre
- Retford Hospital

Marketing & Communication



Pictured above: Source Facebook

The Parks and Open Spaces Management Team will continue maintaining strong links with the local community, through regular consultation and public involvement, the park provides a valuable venue and facility for a diverse variety of events and activities throughout the year.

Improvements to the Council's website have led to a more user-friendly platform for mobile devices and has a strong emphasis on

self-service. Visitors to the site can submit general enquiries relating to its services, report incidents and book events and activities in the Council's parks and open spaces.

The Parks and Open Spaces Management Team have further developed and formally adopted this approach to facilitate its application to other key green space sites within the service.

Understanding the needs of visitors

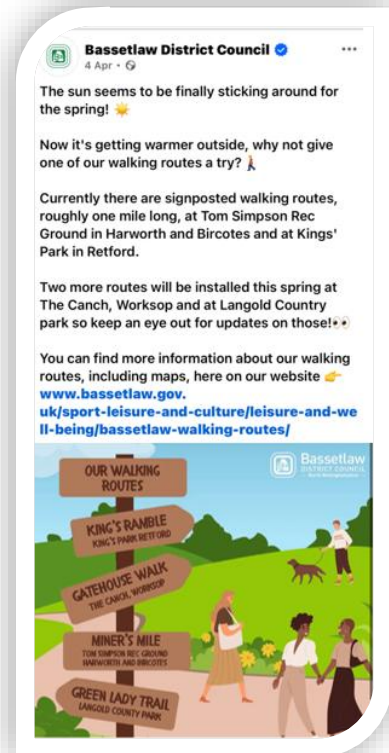
Consultation and engagement at community events staged in Kings' Park. As well as delivering feedback on the event, it also provides a profile from park users based on age, gender, where they live and to some extent their economic profile.

In addition, further consultation can also be through a combination of the following:

- Random user surveys throughout the year.
- On-line surveys using the Bassetlaw District Council and the Parks and Open Spaces websites.
- Collecting feedback on specific proposals (e.g., The Service Assessment Report) at organised public meetings and drop-in sessions.

Fundamentally, the customer research will continue to identify:

- What the public like about Kings' Park.
- What the public dislike about Kings' Park.
- What would encourage the public to make better use of Kings' Park.



Pictured above: Source Facebook

Environmental Performance Assessment

Operation	Activities	Aims & Objectives	Options & Opportunities
Grass Mowing (Low Amenity)	Cut twice/month growing season. No collection of arising	Carbon reduction	Reduce mowing around trees, wildflower margins. Plant native bulbs to increase biodiversity and interest.
Grass Mowing (Ornamental Lawns)	Cut weekly during season.	Arising from mowing left on areas where appropriate and maintain high standard of maintenance.	Reduced waste disposal costs with clippings returned to disperse naturally
Reduce strimming around trees/bins	Monthly during season	Reduced use of herbicides	Relocate bins if on grass area. Add concrete pads where possible.
Hedge Cutting (Low Amenity)	Annual cut with tractor using side arm flail cutter.	Maintain perimeter hedges.	Leave 2m grass margin for wildlife refuge.
Hedge Cutting (High Amenity)	Twice/year after nesting season.	Maintain high standard.	Reduce cuts to once a year where appropriate.
Pesticides & Herbicides	Last resort use. Apply mulches around plants to suppress weed growth. within high amenity areas.	Evaluate the environmental impact and use droplet applicators where required	Manual traps. Companion Planting for natural control methods. Organic treatments.
Watering Seasonal Bedding	Irrigate first 4 weeks.	Aid plant establishment.	Install automatic watering system
Herbaceous	Apply mulches	Reduction in the	Use drought

Borders & Shrubs	around plants to suppress weed growth.	use of fertilisers, reduce phosphate run off & use of herbicides	resistant species of trees, shrubs & bedding plants.
Tree works	All arisings chipped and left on site, wherever appropriate and practicable. Where possible large timbers left on ground.	Reduced waste transportation. Creation of habitat piles	Explore options for use of surplus arisings and timber.

Machinery & Equipment	Commitment to reducing carbon footprint and convert to alternative fuels.	Reduce CO2emissions. Small machinery replaced every 3 years to ensure reliability and up to technology is used	Switch to alternative fuels when replacing machinery. Servicing intervals/hours of use between servicing is strictly adhered to for extended machinery life and reduction of emissions.
Recycling & Composting	Provision of green waste skips for off-site composting i.e., grass clippings, shrub pruning's etc.	Improve recycling of green waste •On average 67% of all skip waste produced by the parks service is composted annually.	Create on site composting area to reuse green waste across sites. Reduce waste disposal costs
Furniture & Fixtures	Inspect benches & bins. •Use recycled plastic timber	Maintain safety. Minimal maintenance and extended lifetime	Use recycled materials. Repair instead of replacing.

	substitutes where possible. Including benches, fencing, signs, and posts	of product when recycled plastic timber.	
Dog Fouling Management	Provide dual use bins for litter & dog waste •Dogs are banned from within enclosed children's play areas as part of the Council's Public Spaces Protection (Dog Control) Order 2024.	Reduction in bin requirement. Council's enforcement team monitor for compliance with Dogs (Fouling of Land) Act 1996	<ul style="list-style-type: none"> • Awareness campaigns. • Encourage reporting of offenders. Encourage responsible dog ownership
Wildlife Boxes	Install bird & bat boxes.	Support biodiversity.	Monitor usage. Expand programme.
Peat Reduction	No peat-based compost used on site	Protect habitats	Use peat-free alternatives.
Painting & Timber Care	Use water based-high quality paints.	Extend lifespan.	Use eco-friendly paints.
Plastic Reduction	Minimise plastic use by using biodegradable alternatives e.g. tree guards.	Reduced environmental impact	Switch to ecofriendly alternatives. Re-use or recycle plastics.

New in 2025

This part of the plan provides an update on the new additions, improvements and activities/events that have occurred throughout the given year of the park and reflects on those successes and achievements that can sometimes be overlooked when striving forward with new schemes and initiatives. It also gives an opportunity to recognise the works that have been delivered through the previous year either as part of the action plans within this management plan or the wider 2040 vision to create a healthy district.

The following extracts are taken from the Council's own social media and press releases relating to the park and service area within this set timeframe.

Move More in May returns to Kings Park – May 2025



Move More in May will end on a high with a celebration event in Retford recognising a month of movement from Bassetlaw residents.

Over the coming weeks, people will be encouraged to move more and get active in whichever way they can, culminating with a celebration event in Kings' Park on Friday 30th May providing a day of fun for all the family.

The event, which starts at 11am, is free to attend with activities including a climbing wall, free fitness sessions, outdoor family games and much more to get your pulse rate going.

The event is being hosted by Bassetlaw District Council, in collaboration with the Bassetlaw Place Based Partnership.

Cllr Lynne Schuller, Cabinet Member for Health and Wellbeing, said: "We are once again proud to join together with our health colleagues within the Place Based Partnership and encourage people to 'Move More in May'.

"We also look forward to welcoming you to the celebration event Friday 30th May at Kings Park where the Council will showcase and celebrate all of your hard work.

"Working towards our Vision 2040 of a healthier, happier community we want to provide everyone with the opportunity to increase their movement and in turn, their wellbeing. Being more active works to improve our physical and mental health and helps us to achieve more. We look forward to seeing the fun ways that you choose to move more and hearing about what you achieve.

Other activities on the day include archery, giant board games, ribbon dancing, craft sessions and the appearance of mascots including Bluey and Minions. There will

also be the chance to get free health checks and speak with health providers and other services in Bassetlaw such as BCVS, BPL and the National Trust.

Helen Azar, Head of Health Inequalities and Senior Transformation Manager, Bassetlaw Place-Based Partnership said:

“Move More in May is a joint initiative supported by a wide range of partners across Bassetlaw with the aim of encouraging people of all ages, sizes, shapes and abilities to be more active and improve their health and wellbeing. The aim this year is to collectively ‘Move around the World’, the equivalent of travelling 25,000 miles – one lap around the planet.

“There are also some great prizes up for grabs and by registering and sharing your progress, you’ll be entered into a free prize draw where you could win a Fitbit, an air fryer, National Trust membership, swimming passes, days out, and much more.”

For more information about how to get involved and to track your moves visit:

www.movemoreinmay.org.uk

Green Flags to proudly fly over three of Bassetlaw’s parks- July 2025



Pictured: Cllr Darrell Pulk, Cabinet Member for Neighbourhoods along with members of the Parks and Open Spaces team.

Three of Bassetlaw’s parks will proudly fly Green Flags for the second year in a row after officially being recognised as some of the best open spaces in the country.

Bassetlaw District Council is celebrating Green Flag Awards for Langold Country Park, Kings’ Park in Retford and Worksop’s Memorial Gardens and The Canch.

The award is the international quality mark for parks and green spaces and Langold Country Park has received its green flag for the second time, Kings’ Park has reached this high standard for

the 18th time, while The Canch has won the award for 12 years running.

Cllr Darrel Pulk, Cabinet Member for Neighbourhoods said: “It is fantastic to get this recognition for these three much loved parks.

“Receiving these awards is a testament to the hard work and dedication of our Parks and Open Spaces team, our Ground Maintenance staff and partner organisations to maintain them at a high standard.”

Investment continues in improving facilities in our parks, including new accessible, community friendly outdoor gym equipment at the Canch, a new walking route at

Langold Country Park, while we continue to host events such as Panto in the Park by TaleGate Theatre.

Green Flag Award Scheme Manager, Paul Todd MBE, said: “Congratulations to everyone involved who have worked tirelessly to ensure these three parks achieve the high standards required for the Green Flag Award.

“Quality parks and green spaces make the country a healthier place to live and work in, and a stronger place in which to invest.

“Crucially, these three parks provide a vital green space for communities to enjoy nature, and during the ongoing cost of living crisis it is a free and safe space for families to socialise. It also provides important opportunities for local people and visitors to reap the physical and mental health benefits of green space.”

The Green Flag Award scheme, managed by environmental charity Keep Britain Tidy under licence from the Ministry of Housing, Communities & Local Government, recognises and rewards well-managed parks and green spaces, setting the benchmark standard for the management of green spaces across the United Kingdom and around the world.

Love Parks Week July 2025

Bassetlaw District Council 25 Jul · 🌐

It's time for **#LoveParksWeek2025** and over the next seven days we're going to be boasting about the wonderful parks we have across Bassetlaw!

Today we're telling you about Kings' Park in **#Retford**. 🌳

Kings' Park is located in Retford Town Centre and covers a huge 10 hectares. It has a range of features and facilities for the whole family to enjoy, including:

- 🌊 Children's Splash Park Play Area (Open May – September)
- 🎳 Bowling Green
- 🎾 Tennis Courts
- 🏈 Multi-Use Game Area
- 🛹 Skate Park
- 🎡 Play Area
- 🎭 Performance Stage
- 🌹 Rose Garden
- 🌿 Community Garden
- 🦋 Wildlife Garden
- 🏡 Formal Garden
- 🍦 Ice Cream Kiosk
- 🚰 Public Convenience Facility

This summer, **TaleGate Theatre Productions Ltd's** Panto in the Park is once again returning to Kings' Park with the following shows 🎭

- 🎭 The Snow Queen: 12th August at 2pm

This summer, **TaleGate Theatre Productions Ltd's** Panto in the Park is once again returning to Kings' Park with the following shows 🎭

- 🎭 The Snow Queen: 12th August at 2pm
- 🎭 The Frog Prince: 18th August at 2pm
- 🎭 Beauty and the Beast: 29th August at 2pm

Find out what else is taking place across all of our parks this summer 🎭 www.bassetlaw.gov.uk/media-centre/events/

Retford Kings' Park

Love Parks Week 2025

Bassetlaw DISTRICT COUNCIL
North Nottinghamshire

KEEP BRITAIN TIDY.

Source: Facebook

Panto in the Park – August 2025



The poster features a large photograph of a panto performance in a park. A performer in a black and white outfit is on stage, facing a large, diverse audience of people sitting on the grass. The text 'PANTO IN THE PARK' is overlaid on the image in large, colorful, stylized letters. In the top left corner, there are logos for 'TaleGate Theatre' and 'Bassetlaw Council'. Below the main image are three circular icons: the first shows a white-haired character (Snow Queen), the second shows a green frog and a prince (Frog Prince), and the third shows a man in a brown coat and a woman (Beauty and the Beast).

TaleGate Theatre Bassetlaw Council

PANTO IN THE PARK



BASSETLAW'S PANTO IN THE PARK 2025

A free summer of slapstick, songs and silliness with TaleGate Theatre

 **Kings Park, RETFORD**

THE SNOW QUEEN Tuesday 12th August 2025 at 2pm

THE FROG PRINCE Monday 18th August 2025 at 2pm

BEAUTY AND THE BEAST Friday 29th August 2025 at 2pm

 talegatetheatre.co.uk  [talegatetheatre](https://www.facebook.com/talegatetheatre)  [talegate_theatre](https://www.instagram.com/talegate_theatre)  [talegatetheatre](https://twitter.com/talegatetheatre)

You said, we did.

Category	Key Feedback	What we've done
A Welcoming Place	<p>Fishing persists despite 'no fishing' signs – alternative approach needed.</p> <p>Play area requires more inclusive items for SEND users.</p>	<ul style="list-style-type: none"> ✓ Talking to community safety team. ✓ All play areas have 20% of inclusive play equipment.
Healthy, Safe & Secure	<p>Exposed chain on trim trail and fire-damaged picnic benches need attention</p> <p>Pavilion camera misaligned.</p>	<ul style="list-style-type: none"> ✓ Picked up in repairs by our playground inspector. ✓ Reported to CCTV contractors.
Well Maintained & Clean	<p>Recycling unclear due to lack of signage</p> <p>Infrastructure generally good, but moss on paths and minor fencing damage noted.</p>	<ul style="list-style-type: none"> ✓ Recycling suspended due to recent fire at MRF. Will review. ✓ Review of paths will be due 2026.
Community Involvement	<p>User feedback positive overall, but lack of open toilets limits visit duration.</p>	<ul style="list-style-type: none"> ✓ Toilets will only be operational during splash park opening times, due to vandalism when not monitored. Alternative provision is within five minutes' walk of the park.
Marketing & Communication	<p>Noticeboards present but event info outdated; website up to date.</p> <p>Correct flag flying, though flagpole location confusing; previous year's certificates displayed.</p>	<ul style="list-style-type: none"> ✓ Signage to be reviewed and updated. 3 flagpoles are corporate.

Section 3 - Delivering the Vision: **Plans and Resources**

Section index:

- **Aims and Objectives**
- **Action Plans**
- **Financial Resources**
- **Staffing Resources**
- **Operational Maintenance**

This section sets the framework for delivering the park's vision. Aims and Objectives define goals, while Action Plans outline steps to achieve them.

Financial Resources outlines the annual maintenance cost for the park, Staffing Resources detail the capacity and roles, and Operational Maintenance highlights how the park is kept safe, attractive, and well-managed.

Aims and Objectives

Aim One - To encourage existing users and new visitors to Kings Park

The key actions for the successful delivery of this aim will be achieved as follows:

- (1) Raise the profile of Kings Park by:
 - Improving the information of Kings Park on the council website.
 - Share updates via social media, council newsletters, and noticeboard.
 - Engaging with park users. 'Love Parks Week' on social media.
 - Encouraging local media to attend events in Kings Park.
 - Encourage the Volunteer Gardeners Group and to focus on new themes and initiatives.
 - Continue to work with Health and Wellbeing to highlight the health aspects of using the park.

- (2) To better inform users and users about Kings Park by:
 - Working with other local groups to inform members about the park and its activities for Bassetlaw, e.g. voluntary services, local community groups, health and wellbeing charities, schools and young people's services.
 - Working actively with other agencies such as. the Police and the Council's Community Safety Team to address any specific problems.
 - By continuing to prepare press releases to publish achievements, activities, and events in Kings Park.
 - By continuing to build on the positive publicity achieved through press coverage of park-based activities and the installation and opening of new facilities.
 - Use Bassetlaw District Council's social media channels to promote events and activities.

Aim Two - Increase dwell time when visiting the park

The key actions for the successful delivery of this aim will be achieved as follows:

- By staging a programme of events and activities in Kings Park. The Parks and Open Spaces Management Team have developed this initiative to offer advice and guidance to organisers on the administration and management of community events.
- Promote themed trials.
- By continuing to work with the Council's Health and Wellbeing team to promote Kings Park as an accessible green space for sporting activities

and games.

Aim Three - To actively encourage all sectors of the community to play a positive role in the use and development of Kings Park.

The key actions for the successful delivery of this aim will be achieved as follows:

- **Support Volunteer Engagement:** Continue to work closely with the Kings Park Volunteers, promoting inclusivity and encouraging broad community representation to ensure local views and opinions are reflected.
- **Public Consultation:** Organise and run consultation sessions to gather public feedback and input for the next stage of ongoing park improvement plans.

Aim Four - To encourage the use of Kings Park based on equal opportunity principles.

The key actions for the successful delivery of this aim will be achieved as follows:

- **Create Inclusive Opportunities:** Offer activities and stage events that reflect and represent the social, economic, and cultural diversity of the local community.

Inform Equal Opportunity Delivery: Use insights from the planned consultation exercises to identify community needs and determine the most effective ways to provide equal access and representation.

The future direction and development of Kings Park was set out through the previous development plan produced after extensive consultation with its users, visitors, and residents. Wider consultation included Elected Members, stakeholders, organisations, and groups with an interest in the park.

All the development works will be delivered in line with the Green Flag judging criteria as follows:

- Aim One – Create a welcoming place.
- Aim Two – Ensure that the Park is healthy, safe, and secure.
- Aim Three – Ensure that the Park facilities are well maintained and clean.
- Aim Four – Ensure environment management of resources.
- Aim Five – Ensure management of biodiversity, landscape, and heritage.
- Aim Six – Encourage and sustain community involvement.
- Aim Seven – Ensure effective marketing and communications.

- Aim Eight - Ensure future viability of the park through effective management

Action Plans

Sustainable, Resilient Planting Landscapes

Action	Timeline	Lead	Outcome
Develop phased installation schedule	Years 1–3	Parks Team	Phased schedule created and approved
Deliver staff training on sustainable planting	Year 1	Parks Operations	Training delivered to all staff
Install educational signage	Year 1–2	Comms & Parks	Signage installed in key areas
Create two pilot beds	Year 1	Parks Operations	Pilot beds established and monitored

Biodiversity & Pollinator-Friendly Planting

Action	Timeline	Lead	Outcome
Map priority biodiversity sites	Year 1	Ecology Lead	Site mapping completed
Implement seasonal planting succession	Year 1–3	Horticulture Team	Full seasonal succession implemented
Install micro-habitats	Year 1–2	Parks Operations	Habitats installed and maintained
Conduct pollinator monitoring	Seasonal	Ecology Lead	Monitoring reports completed
Reduce Herbicide use	Annually	Parks Operations	Herbicide free site

Learning & Community Engagement Hubs

Action	Timeline	Lead	Outcome
Develop annual workshop programme	Annual	Parks Operations	Programme published and delivered
Form partnerships with schools and groups	Ongoing	Parks Management	Partnership agreements in place
Develop self-guided materials	Year 1	Comms Team	QR-linked resources installed
Create core volunteer group	Year 1–2	Parks Management	Volunteer group active and attending sessions

Visitor Experiences

Action	Timeline	Lead	Outcome
Develop 12-month seasonal display plan	Year 1	Display Design Group	Plan finalised and approved
Establish internal design group	Year 1	Parks Management	Group established and meeting regularly
Prepare flexible plant lists	Annual	Parks Operations	Lists created and stocked
Coordinate with comms for promotion	Seasonal	Comms Team	Promotions released for each display
Resurfacing works to keep main access areas safe and presentable	Year 1-2	Parks Management	Routes resurfaced, improved accessibility and safety.
Replace old litter bins with new, durable models	Year 1-2	Parks Management	Better Capacity & Design: Weather Resistance: Visual Appeal encourages Proper Disposal.
Update and standardise park signage (wayfinding, rules, heritage)	Year 1	Parks Management	A unified visual identity, improve accessibility, and strengthen the park's brand. Clear, well-designed signage supports visitor safety, promotes responsible behaviour, and enhances heritage interpretation.

Work closely with Community Safety Team to address issues	Year 1	Parks Management, Parks Operational.	ASB incidents reported and resolved; joint patrols.
---	--------	--------------------------------------	---

Recreation Development

Action	Timeline	Lead	Outcome
Enhance Sports Area and management through partnerships with local tennis group	Year 1-2	Parks Management	Increased participation in tennis activities, improved facility management, and stronger community ties.
Refurbish and Repurpose Pavilion	Year 1-2	Parks Management	A revitalised facility serving diverse community functions and enhancing park heritage value.

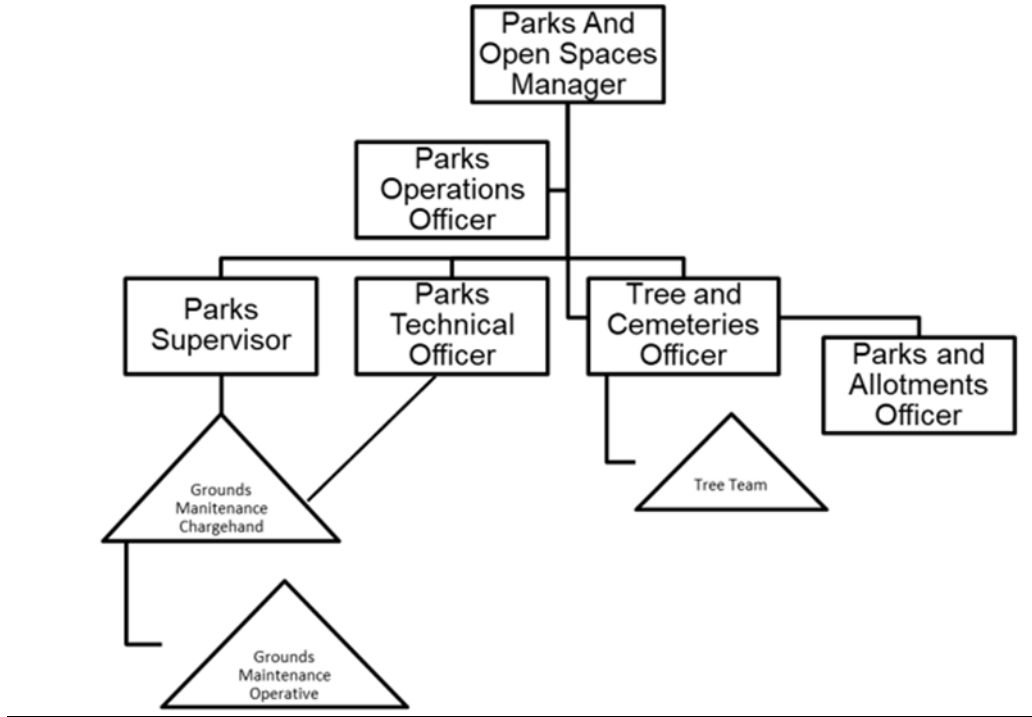
Financial Resources

Set out below is the annual maintenance budget associated with Kings Park.

Maintenance type	Breakdown of cost	Annual Cost
Annual Bedding Management	Maintenance	£13,506.42
	Plants, bulbs and fertilisers	£3,209.93
Shrub/Herbaceous Border Management	Ornamental shrub borders	£6,000
	Herbaceous Border	£2,053.75
Rose Garden Management	Maintenance	£1,839.05
Grassland Management	Ornamental lawns	£4,070.78
	Amenity lawns	£6,908.67
Hedgerow Management	Ornamental	£2,819.20
	Amenity	£29.16
Play Areas and Skate Park Management	Inspections	£912.21
	Maintenance/repairs	£6,537.31
Bowling Green Management	Maintenance	£8,143.97
	Irrigation	£277.44
Waste & Litter Management	Waste Disposal	£21,152.15
Tree Management	Maintenance/repairs	£6,825.80
Splash Park Management	Maintenance	£22,277.31
Building Management	Maintenance/repairs	£749.90
Total		
£107,313.05		

Staffing Resources

Structure



The above structure chart relates to Bassetlaw District Council's overall Parks and Open Spaces Management and Grounds Maintenance staff that covers Kings Park.

The rectangle shape illustrates the officers involved in the management of Kings Park whereas the triangle shape illustrates the staff who are directly involved with the ground's maintenance operations within the park.

The staff involved with the maintenance operations are not site based within the park itself but are brought in to carry out those works as required. This will often involve staff being on the site daily or throughout the working day during the peak season between March and October. At other times this may be less frequent or as and when necessary for additional works.

The team has expertise in fine turf maintenance and arboriculture work.

Plant and tools available for the park are funded from maintenance budgets, held within the Parks and Open Spaces Team.

The workforce, resources and management being employed at the park are subject to an annual review to ensure the needs and standards are being met.

Operational Maintenance Schedules

The below chart shows the monthly maintenance schedule for the park, the number indicates the frequency per month.

Task	Month											
	J	F	M	A	May	J	Jul	Aug	S	O	N	D
Grass Cut Amenity	0	0	1	2	2	2	2	2	2	1	0	0
Splash Park Maintenance	0	0	0	10	31	30	31	31	30	0	0	0
Winter Plant Maintenance	0	0	1	1	0	0	0	0	0	1	1	1
Summer Plant Maintenance	0	0	0	0	1	1	1	1	1	0	0	0
Playground Inspection	4	4	4	4	4	4	4	4	4	4	4	4
Tree Inspections	0	0	0	1	0	1	0	0	0	0	0	0
Litter Collection	8	8	8	8	8	8	8	8	8	8	8	8
Sweeping Paths	1	1	1	1	1	1	1	1	1	1	1	1
Footpath Inspection	0	1	0	0	0	0	0	0	0	0	0	0
Rose Bed Maintenance	1	1	1	1	1	1	1	1	1	1	1	1
Shrub Pruning	1	0	1	0	0	0	0	0	0	1	1	0
Tree Works	As required											
Leaf Clearance	0	0	0	0	0	0	0	0	0	1	1	1
Clean Toilets	0	0	0	30	31	30	31	31	30	0	0	0
Legionella Control	1	1	1	1	1	1	1	1	1	1	1	1

Section 4- Review and Supporting information

Section index:

- Monitoring and Review of Working Practices
- Monitoring and Review of Conservation and Heritage
- Monitoring and Review of Management Plan
- Policy and Context
- Supporting Documentation and Information Items
- Contact Details

Having established a range of aims and objectives through the documented analysis process, it is essential that measures are in place to monitor progress in delivering and reviewing actions accordingly.

This Management Plan will be used to focus on this monitoring process as follows:

Monitoring and Review of Working Practices

Having achieved and retained Green Flag status, Bassetlaw District Council will ensure that a raft of recognised good working practices is applied to maintain the high standards already achieved in Kings Park.

In a proactive approach, the Parks and Open Spaces Management Team will regularly review and revise, where necessary, its risk assessment procedures and response mechanisms.

Meeting quarterly with the Parks and Open Spaces Management Team will monitor and review the following:

- Grounds maintenance procedures.
- Risk assessment procedures.
- Remedial works.
- Inspection routines.
- Improvement works

Monitoring and Review of Conservation and Heritage

Having restored many of Kings Park heritage features, the Parks and Open Spaces Management Team will ensure that all such assets are regularly monitored for fair wear and tear and the adverse effects of possible abuse.

Any such outcomes will be acted upon through appropriate practices to avoid further deterioration or long-term dilapidation.

In order to ascertain the success of conservation projects, the Parks and Open Spaces Management Team will work in partnership with the Nottinghamshire Wildlife Trust and volunteers to undertake surveys.

These will include:

- Nesting box survey.
- Habitat provision and management.
- Flora and fauna studies and reports.

Monitoring and Review of the Plan

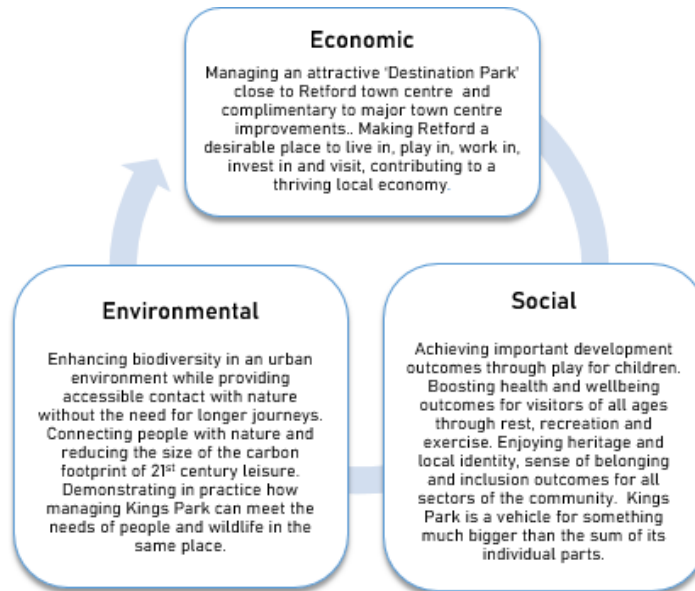
This version of the Kings Park Management Plan will be used as a working document to deliver ongoing improvement and restoration projects. It will also enable the Parks and Open Spaces Management Team to focus on the maintenance and development of the site as a whole, in so doing, consolidate the positive work undertaken in recent years. The Management Plan has set delivery targets that are measured and achievable. To ensure that as many, if not all, targets are reached, the Parks and Open Spaces Management Team will meet at regular intervals to monitor and review progress.

It is inevitable that the delivery process will meet with challenges and constraints, which could impact negatively on the development and use of the facility.

However, through the support of partnership working and from a strong commitment from its staff, Bassetlaw District Council are confident that its aims and objectives will be delivered and that its vision for Kings Park can be achieved.

Policy Context

This plan aligns Kings Park with key national, regional, and local policies. Rather than listing every policy, the diagram below highlights the main themes relevant to the park. Full details of policies and guidance, including descriptions and links, are provided in the Appendices.



Supporting documentation and information items

The following supporting documentation and information items can be supplied if required by judges.

Section 1: Maintenance/Inspection

- Risk Assessments
- Play Area Inspections
- Water Play Park Maintenance
- Grounds Maintenance Specifications (examples)
- Tree Management and Inspections
- Vision 2040 – Bassetlaw (updated March 2026)
- Bassetlaw Local Plan 2020-2037

Contact us.



01909 533 533



www.bassetlaw.gov.uk



customer.services@bassetlaw.gov.uk



Text us on 07797 800 573



Find us on Facebook - BassetlawDC



Twitter @BassetlawDC



Visit us at:

Retford One Stop Shop
17B The Square, Retford DN22 6DB

Worksop One Stop Shop
Queen's Buildings, Potter Street, Worksop S80 2AH

All offices are open: Monday to Friday 8:40am to 5:00pm

If you need any help communicating with us or understanding any of our documents, please contact us on 01909 533 533.

We can arrange for a copy of this document in large print, audiotape, Braille or for a Language Line interpreter to help you.