

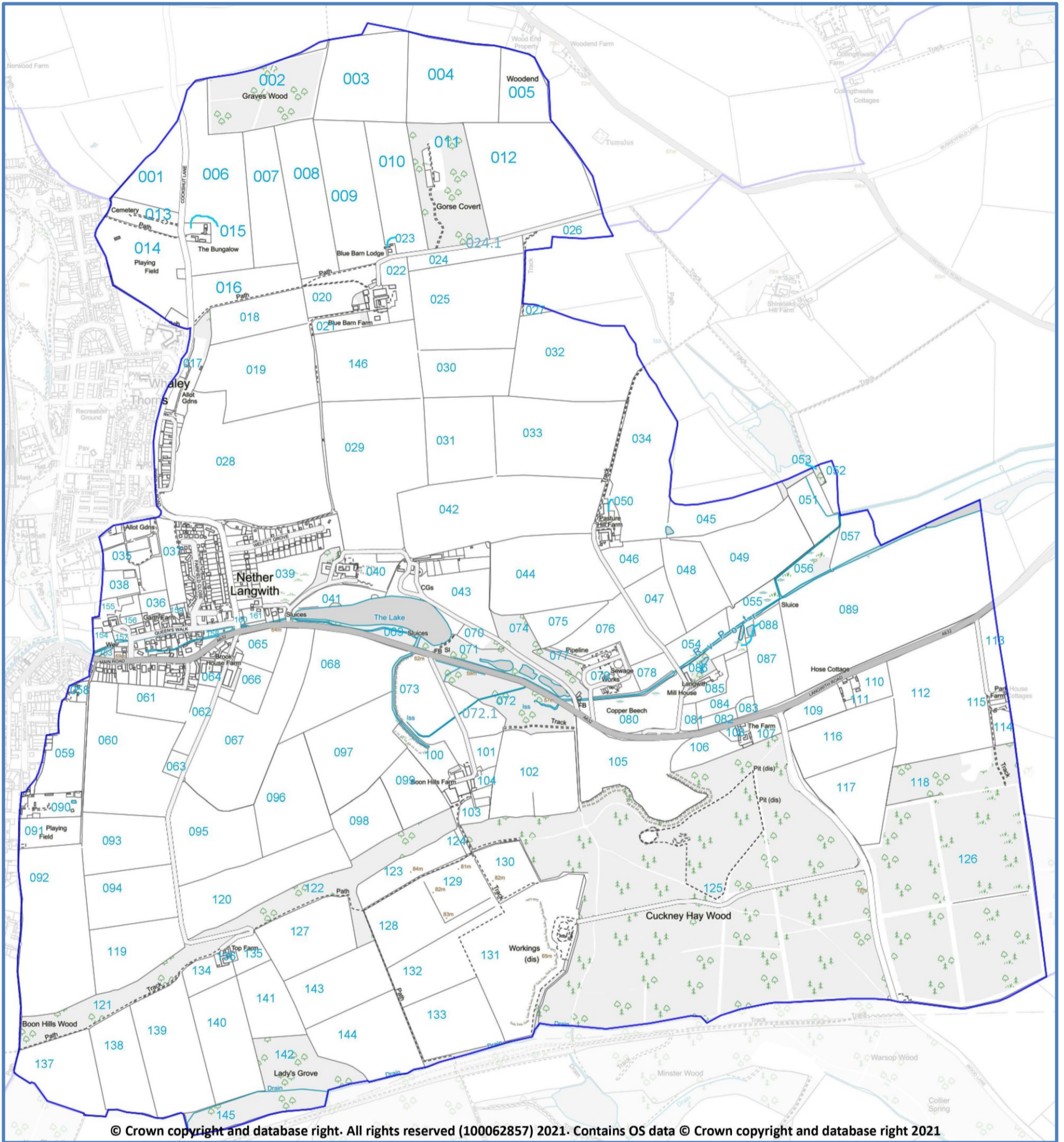
NETHER LANGWITH NEIGHBOURHOOD PLAN

APPENDIX 5: INVENTORY OF LOCAL GREEN SPACE, OPEN SPACES AND OTHER ENVIRONMENTALLY SIGNIFICANT SITES

1. Scoring criteria and system

Criterion (NPPF 2021)	Score range			Notes
LOCAL IN CHARACTER , not an extensive tract of land	N	Y		Yes is essential for LGS designation. The site should be a single bounded parcel of land, or a small, coherent group (evidence-based, with shared characteristics and in single ownership).
SPECIAL TO COMMUNITY:				
PROXIMITY	0	1-4	5	<p>5 = an open space <u>within</u> a settlement</p> <p>4 = adjacent to the settlement boundary (Limit to Development line when defined)</p> <p>3, 2, 1 = successively farther from settlement</p> <p>0 = most distant from main settlement(s)</p>
BEAUTY	0	1-2	3	Subjective, relative (give justification); use consultation 'dot' map results for views. Only the most attractive land in the Plan Area should qualify. Most should get 0 or 1.
TRANQUILLITY	0	1	2	<p>Tranquillity should be judged as a real experience; just being 'a long way from anywhere' doesn't make a site tranquil. Most sites should get 0.</p> <p>2 will probably be limited to e.g. churchyards, well-designed memorial gardens, managed semi-natural habitats where birdsong is louder than traffic noise.</p>
RECREATIONAL VALUE	0	1-4	5	<p>5, 4 = Public Open Spaces (OSSR or equivalent) for amenity and/or as green space, for sport, recreation, or as facilities for children and young people</p> <p>3 = Membership sport facilities (tennis, bowls, etc.). Very well used park or other recreational space with full or comprehensive public access. Managed wildlife site with public access. Semi-natural parkland (trees, grass) with public footpaths and no restriction on access.</p> <p>2 = Paddock or grazing field with 1 or more public footpaths, e.g. well-used for dog-walking, traditional sledging field</p> <p>1 = arable farmland with public footpath but no other access.</p> <p>0 = private property with no public recreational value or access</p>
LOCAL SIGNIFICANCE:				
HISTORICAL SIGNIFICANCE	0	1-4	5	<p>Historical significance can only apply to sites and features that can be seen (to be appreciated) or are proven buried archaeological features. NB cumulative: more features/designations = higher score.</p> <p>5 = statutory site, includes or comprises Scheduled monument, Listed Building, feature or structure. National Trust or English Heritage site</p> <p>4 = site with features in the County <i>Historic Environment Record</i>, Historic England <i>PastScape</i> records. <i>Registered park or garden</i>. Well-preserved <i>ridge and furrow</i>.</p> <p>3, 2 = site includes feature, earthworks or building with known local historic environment significance – history includes 20th century. Fainter <i>ridge and furrow</i></p> <p>1 = site of local oral or recorded history importance, no actual structure</p> <p>0 = No evidence for historical environment significance</p>
RICHNESS OF WILDLIFE (BIODIVERSITY); GEOLOGY	0	1-4	5	<p>Protection of habitats and species, in compliance with EU Directives and English legislation, at the local level of individual land parcels. NB cumulative: more features/species = higher score.</p> <p>5 = Statutory site, includes or comprises SSSI (biodiversity or geology) or other national or European designation.</p> <p>4 = County Wildlife Trust, etc. <i>nature reserve</i>, <i>Country Park</i> with importance for biodiversity, etc.</p> <p>3 – site with National, county and local biodiversity features, e.g. <i>Priority Habitats</i>, occurrence of one or more <i>Species of Conservation Concern</i> (use national or county Biodiversity Action Plan (BAP) Species lists), mapped Gt Crested newt ponds, bat roosts and foraging areas. County or local site designations e.g. <i>Local Wildlife Site (LWS)</i>, Regionally Important Geological Site (RIGS), <i>Site of Importance for Nature Conservation (SINC)</i>, <i>Local Nature Reserve</i>, <i>Community WildSpace</i>, etc.</p> <p>2 = other site of known local biodiversity importance not recorded elsewhere with e.g. BAP species, species-rich hedgerows, watercourse, pond</p> <p>1 = (parish background level), moderate or potential wildlife value</p> <p>0 = no evidence for natural environment significance</p>
Maximum possible score			25	

2. Location map



3. Inventory

KEY TO COLOUR-CODING FOR DESIGNATIONS ETC.

 Local Green Space	 Important Open Space	 Historical significance	 Wildlife significance	 Statutory (historic) protection	 Ridge and furrow
---	--	---	---	---	--

INVENTORY MAP REFERENCE	DESCRIPTION / EVIDENCE	NPPF (2021) CRITERIA FOR LOCAL GREEN SPACE ASSESSMENT							TOTAL /25
		LOCAL: BOUNDED, NOT EXTENSIVE YES/NO	PROXIMITY 0 - 5	SPECIAL TO COMMUNITY (<10)			LOCAL SIGNIFICANCE (<10)		
				BEAUTY 0 - 3	TRANQUIL 0 - 2	REC. VALUE 0 - 5	HISTORY 0 - 5	WILDLIFE 0 - 5	
158	Queen's Walk (River Poulter) village green Open space forming scenic and spatial centrepiece of the village. Very attractive – images of the green and its surroundings feature in material promoting Nether Langwith as a destination. Relatively tranquil (some traffic noise). Important amenity open space (informal park) for general recreation and community events. Registered Village Green VG7, Notts CC under the Commons Registration Act 1965. Includes sheep-wash and other structures of local historical/heritage significance. Surrounded by Listed Buildings and Local Heritage Assets List buildings and structures; within (and characteristic feature of) Nether Langwith Conservation Area. River Poulter is a Local Wildlife Site with species of conservation concern (invertebrates, mammals and birds).	Y	5	2	1	4	3	3	18
069	Langwith Lodge parkland and lake (part) <i>Priority Habitat</i> (Natural England designation) Woodpasture and Parkland. Includes <i>Notts Historic Environment Record</i> monuments MNT26614 (Grounds at Langwith Lodge/House; part) and L6826; the latter is part of the mill race system for Langwith Mill (L9177, q.v.)		4	3	1	2	3	3	17
070	Langwith Lodge parkland and lake (part) <i>Priority Habitat</i> (Natural England designation) Woodpasture and Parkland. [Part] <i>Notts Historic Environment Record</i> monument MNT26614 (Grounds at Langwith Lodge; part)		4	3	1	2	3	3	17
071	Langwith Lodge parkland and lake (part) <i>Priority Habitat</i> (Natural England designation) Woodpasture and Parkland. Includes <i>Notts Historic Environment Record</i> monuments MNT26614 (Grounds at Langwith Lodge; part) and L6825 sluice, both components of the ornamental parkland and lake		4	3	1	2	3	3	17
041	Langwith Lodge parkland and lake (part) <i>Priority Habitat</i> (Natural England designation) Woodpasture and Parkland Includes <i>Notts Historic Environment Record</i> monuments MNT26614 Grounds at Langwith Lodge; part, and L6827 sluice – all components of the ornamental parkland		3	3	1	2	3	3	16
043	Langwith Lodge parkland and lake (part) <i>Priority Habitat</i> (Natural England designation) Woodpasture and Parkland [Part] <i>Notts Historic Environment Record</i> monuments MNT26614 (Grounds at Langwith Lodge; part) and L6824 boathouse		3	3	1	2	3	3	16
122	Boon Hills Wood east <i>Priority Habitat</i> (Natural England designation) Ancient and semi-natural woodland. Also <i>Local Wildlife Site (LWS 1/112</i> Notts. Biological and Geological Records Centre designation) for tree, understorey and ground cover flora associated with ancient woodland (77 species recorded). Includes <i>Notts Historic Environment Record</i> monument L6700 (trackway, on causeway)		2	3	2	2	3	3	15
125	Cuckney Hay Wood Regionally significant area of woodland. Mixture of coniferous (mid-20 th century replanting) and deciduous woodland with compartments and rides. Main area is <i>Priority Habitat</i> Replanted Ancient Woodland (Natural England designation). Small section in SE corner is <i>Priority Habitat</i> Ancient and Semi-natural Woodland (Natural England designation). Whole site is <i>Local Wildlife Site</i> (LWS 5/86; Notts. Biological and Geological Records Centre		1	3	2	2	3	4	15

INVENTORY MAP REFERENCE	DESCRIPTION / EVIDENCE	NPPF (2021) CRITERIA FOR LOCAL GREEN SPACE ASSESSMENT							TOTAL /25
		LOCAL: BOUNDED, NOT EXTENSIVE YES/NO	PROXIMITY 0 - 5	SPECIAL TO COMMUNITY (<10)			LOCAL SIGNIFICANCE (<10)		
				BEAUTY 0 - 3	TRANQUIL 0 - 2	REC. VALUE 0 - 5	HISTORY 0 - 5	WILDLIFE 0 - 5	
	designation) for relics of the original ancient woodland: 5 tree species including both British native oaks, 4 understorey spp. including old coppice hazel, and a number of ancient woodland indicator flower species. Also includes <i>Notts Historic Environment Record</i> monument M4055 site of limestone quarries (two parts), M8944 site of limestone quarries, and M4412 old sand pit ('hills and holes' earthworks survive). Of these M8944 is also <i>Local Geological Site</i> (LGS No14b Nether Langwith Old Quarry for stratigraphy, lithology and fossils of the Permian Cadeby Formation dolostone ('Magnesian Limestone').								
013	Cockshut Lane cemetery OS01 in policy ENV 2. #44 in BDC Open Space Study 2020.		2	3	2	5	2	1	15
035	Kitchener Terrace allotments OS04 in policy ENV 2. #169 in BDC Open Space Study 2020		4	2	1	5	1	2	15
039	Managed and rough grassland with mature boundary hedges; the area was historically part of Langwith Lodge grounds, left undeveloped when Limes Avenue and Welfitt Grove houses were built. Now planned as (private) nature reserve (through joint purchase by residents of Limes Avenue and Welfitt Grove). Local biodiversity site with further potential. <i>Unregistered Park and Garden</i> (BDC designation) as part of Langwith House ornamental parkland – the part not in the Notts HER	Y	4	2	2	2	3	3	15
072	Langwith Lodge parkland and lake (part) <i>Priority Habitat</i> (Natural England designation) Deciduous woodland. <i>Notts Historic Environment Record</i> monument L6501 (mill leat; part)		4	2	0	2	3	3	15
121	Boon Hills Wood west <i>Priority Habitat</i> (Natural England designation) Ancient and semi-natural woodland. Also <i>Local Wildlife Site</i> (LWS 1/112 Notts. Biological and Geological Records Centre designation) for tree, understorey and ground cover flora associated with ancient woodland (77 species recorded)	Y	2	3	2	2	1	3	15
040	Langwith Lodge parkland and lake (part) <i>Priority Habitat</i> (Natural England designation) Woodpasture and Parkland [Part] <i>Notts Historic Environment Record</i> monument MNT26614 (Grounds at Langwith Lodge; part)		3	3	1	0	3	3	14
057	Wet grassland bordering River Poulter (LWS). Included in <i>Cuckney Conservation Area</i> (designated 2010) Local biodiversity site for plants, invertebrates, birds, small mammals, etc.		1	3	2	2	3	3	14
051	Cuckney wet meadow <i>Local Wildlife Site</i> (LWS 5-3375; Notts. Biological and Geological Records Centre designation) for wet grassland with a diverse flora (17 notable species) including Southern Marsh Orchid. Barn owl nesting boxes installed		1	3	2	2	2	3	13
074	Langwith Lodge parkland and lake (part) Deciduous woodland (natural regeneration in and around old workings) with overgrown hedge on west boundary. <i>Priority Habitat</i> (Natural England designation) Deciduous woodland. Includes <i>Notts Historic Environment Record</i> monument L6823 site of old quarry; also SHINE candidate (Natural England)		4	1	0	0	3	3	13
086	Grounds of Cotton Mill (Langwith Mill) Setting for <i>Listed Buildings</i>		3	1	2	2	3	2	13
017	Cockshut Lane allotments OS03 in policy ENV 2. #43 in BDC Open Space Study 2020.	Y	3	2	1	5	1	0	12
085	Pasture, on site of <i>Notts Historic Environment Record</i> monument L9177 Millpond of Langwith Mill (survives as earthworks/hollow)		3	1	2	1	3	2	12
101	Boon Hills Farmstead <i>Notts Historic Environment Record</i> monument L6501 (mill leat; part)		3	2	0	2	3	1	12

INVENTORY MAP REFERENCE	DESCRIPTION / EVIDENCE	NPPF (2021) CRITERIA FOR LOCAL GREEN SPACE ASSESSMENT							TOTAL /25
		LOCAL: BOUNDED, NOT EXTENSIVE YES/NO	PROXIMITY 0 - 5	SPECIAL TO COMMUNITY (<10)			LOCAL SIGNIFICANCE (<10)		
				BEAUTY 0 - 3	TRANQUIL 0 - 2	REC. VALUE 0 - 5	HISTORY 0 - 5	WILDLIFE 0 - 5	
102	Boon Hills Farmstead <i>Notts Historic Environment Record</i> monument L6501 earthworks/cropmarks: enclosure(s)		3	2	0	2	3	1	12
103	Boon Hills Farmstead		3	2	0	2	1	1	12
104	Boon Hills Farmstead		3	2	0	2	1	1	12
011	Gorse Covert Woodland surrounding central clearing. <i>Priority Habitat</i> (Natural England designation) Deciduous woodland.	Y	1	2	1	2	2	3	11
024.1	Blue Barn Lane <i>Local Wildlife Site</i> (LWS 5/2216; Notts. Biological and Geological Records Centre designation) for species-rich (62 spp. recorded) hedgerows and verges, including several ancient woodland indicator species	N	1	2	2	2	1	3	11
054	Wet grassland bordering River Poulter (LWS) Local biodiversity site for plants, invertebrates, birds, small mammals, etc.		1	3	2	2	0	3	11
055	Wet grassland and scrub bordering River Poulter (LWS) Local biodiversity site for plants, invertebrates, birds, small mammals, etc.		1	3	2	2	0	3	11
056	Wet grassland and scrub bordering River Poulter (LWS) Local biodiversity site for plants, invertebrates, birds, small mammals, etc.		1	3	2	2	0	3	11
058	Allotment gardens OS06 in this Neighbourhood Plan	Y	2	1	1	3	0	2	11
081	Mill Land		3	1	2	2	1	2	11
082	Mill Land		3	1	2	2	1	2	11
083	Mill Land		3	1	2	2	1	2	11
084	Mill Land		3	1	2	2	1	2	11
087	Farm Land <i>River side</i>		3	1	2	2	1	2	11
088	Farm Land <i>River side</i>		3	1	2	2	1	2	11
142	Lady's Grove north <i>Priority Habitat</i> (Natural England designation) Ancient and semi-natural woodland. Also <i>Local Wildlife Site</i> (LWS 5/87 Notts. Biological and Geological Records Centre designation) for tree, understorey and ground cover flora associated with ancient woodland (39 species recorded)		2	3	2	1	0	3	11
145	Lady's Grove south <i>Priority Habitat</i> (Natural England designation) Ancient and semi-natural woodland. Also <i>Local Wildlife Site</i> (LWS 5/87 Notts. Biological and Geological Records Centre designation) for tree, understorey and ground cover flora associated with ancient woodland (39 species recorded)		2	3	2	1	0	3	11
153	Private Gardens [Part] <i>Notts Historic Environment Record</i> monument L6106 mounds and bank at Langwith House		5	1	0	0	3	2	11
002	Graves Wood <i>Priority Habitat</i> (Natural England designation) Replanted Ancient Woodland		0	3	1	2	1	3	10
014	Cockshut Lane playing field OS02 in policy ENV 2. Recognised in BDC Playing Pitch Strategy Assessment Report 2019		2	1	1	5	1	0	10
036	Potential Development Site (with Planning Permission) [Part] <i>Notts Historic Environment Record</i> monument L6105 rectangular earthworks (probably a building platform), [adjacent to] Rose Cottage		5	1	0	0	3	1	10
073	Permanent grass, divided by ditch <i>Notts Historic Environment Record</i> monument L5368 (mill race to Langwith Mill; part) – and Ridge & Furrow		3	1	0	2	3	1	10

INVENTORY MAP REFERENCE	DESCRIPTION / EVIDENCE	NPPF (2021) CRITERIA FOR LOCAL GREEN SPACE ASSESSMENT							TOTAL /25
		LOCAL: BOUNDED, NOT EXTENSIVE YES/NO	PROXIMITY 0 - 5	SPECIAL TO COMMUNITY (<10)			LOCAL SIGNIFICANCE (<10)		
				BEAUTY 0 - 3	TRANQUIL 0 - 2	REC. VALUE 0 - 5	HISTORY 0 - 5	WILDLIFE 0 - 5	
090	Rhubarb Farm Not-for profit productive market garden and associated buildings and facilities. Community Interest Company (Charitable Community Horticulture Project). OS07 in this Neighbourhood Plan	Y	3	1	1	3	0	2	10
126	Cuckney Hay Wood east Managed coniferous and mixed woodland		3	2	2	2	0	3	10
044	Arable Farm Land		3	2	1	2	0	1	9
072.1	Permanent grass (sometimes hay meadow?) traversed by ditch. <i>Notts Historic Environment Record</i> monument L6501 earthworks/cropmarks: enclosure(s)		3	1	0	0	3	2	9
092	Potential Development Site (identified by Welbeck in Call for Sites) <i>Currently Arable</i>		2	2	0	2	1	2	9
108	Farm Yard		2	2	0	0	1	0	9
154	Private Gardens (Langwith House)		5	1	0	0	1	2	9
155	Private Gardens (Langwith House)		5	1	0	0	1	2	9
156	Private Gardens (Langwith House)		5	1	0	0	1	2	9
157	Private Gardens (Langwith House)		5	1	0	0	1	2	9
038	Private Land/Garden		5	2	0	0	0	1	8
045	Arable Farm Land		2	3	2	0	0	1	8
046	Arable Farm Land		2	3	2	0	0	1	8
047	Arable Farm Land		2	3	2	0	0	1	8
048	Arable Farm Land		2	3	2	0	0	1	8
049	Arable Farm Land		2	3	2	0	0	1	8
053	Pasture Hill pond and swamp (part) Small section (most is in Cuckney parish) of <i>Local Wildlife Site (LWS 5/3374; Notts. Biological and Geological Records Centre</i> designation; the part in Nether Langwith) for wet woodland and shaded open water		1	2	1	0	1	3	8
065 066	Horse Pasture Permanent grassland [Part] <i>Notts Historic Environment Record</i> monument L6107 Earthworks at Brook Farm – lynchet, bank and (probably) a relict stream course – and Ridge & Furrow		4	1	0	0	3	0	8
067	Farmed Arable Land		2	3	2	0	0	1	8
068	Arable field, with <i>Notts Historic Environment Record</i> monument L5368 Mill Race to Langwith Mill on the NE boundary		2	3	2	0	3	1	8
077	Part of sewage treatment works area, with pipeline surrounded by woodland. <i>Priority Habitat</i> (Natural England designation) Deciduous woodland.		4	1	0	0	0	3	8
078	Small permanent grass field with River Poulter forming the south boundary	Y	3	1	1	0	1	2	8
091	Hardwick Street Rec. playing field, off Langwith Drive OS05 in Policy ENV 2. Recognised in BDC Playing Pitch Strategy Assessment Report 2019		3	0	0	5	0	0	8
097	Arable field, with <i>Notts Historic Environment Record</i> monument L5368 Mill Race to Langwith Mill on the NE boundary		3	1	0	0	3	1	8

INVENTORY MAP REFERENCE	DESCRIPTION / EVIDENCE	NPPF (2021) CRITERIA FOR LOCAL GREEN SPACE ASSESSMENT							TOTAL /25
		LOCAL: BOUNDED, NOT EXTENSIVE YES/NO	PROXIMITY 0 - 5	SPECIAL TO COMMUNITY (<10)			LOCAL SIGNIFICANCE (<10)		
				BEAUTY 0 - 3	TRANQUIL 0 - 2	REC. VALUE 0 - 5	HISTORY 0 - 5	WILDLIFE 0 - 5	
100	Pasture or paddock associated with Boon Hills Farm Includes <i>Notts Historic Environment Record</i> monument M6822 Old clay pit (earthworks) in the NW corner	Y	3	1	0	0	3	1	8
110	Listed Cottage		2	0	0	0	1	0	8
111	Listed Cottage		2	0	0	0	1	0	8
159	Potential Development Site (with Planning Permission) Contain a derelict barn that is planned to be converted to a dwelling.		5	1	0	0	1	1	8
160	Jug & Glass Car Park		5	0	0	0	2	1	8
016	Arable with footpath BTCV Nottinghamshire Sign on field entrance		0	2	1	1	0	3	7
037	Potential Development Site (with Planning Permission)		5	1	0	0	0	0	7
075	Scrubland		3	1	1	0	0	2	7
076	Scrubland		3	1	1	0	0	2	7
079	Sewage Treatment Works Includes filter beds, mown grass, shrubs, etc.	Y	3	0	0	0	1	2	7
080	Small arable field with broad margin on north side bordering River Poulter and STW (079)	Y	3	1	1	0	0	2	7
105	Arable field, with <i>Notts Historic Environment Record</i> monument L5368 Mill Race to Langwith Mill on the S boundary, adjacent to Cuckney Hay Wood		2	2	0	0	3	0	7
106	Farmed Arable Land		2	2	0	0	1	0	7
107	Farmed Arable Land		2	2	0	0	1	0	7
161	Private Garden		4	2	0	0	0	1	7
006	Arable with footpath BTCV Nottinghamshire Sign on field entrance		0	2	1	1	0	2	6
007	Arable with footpath BTCV Nottinghamshire Sign on field entrance		0	2	1	1	0	2	6
115	Park House Farm		2	0	0	1	1	1	6
118	Cuckney Hay Wood east, northern section Area of broadleaved woodland (in one compartment). <i>Priority Habitat</i> Deciduous woodland (Natural England designation) - <i>Forestry Commission, mostly felled</i>		1	2	0	0	1	3	6
059	Pasture		4	1	0	0	0	0	5
060	Pasture		4	1	0	0	0	0	5
061	Pasture		4	1	0	0	0	0	5
062	Farmed Arable Land		4	1	0	0	0	0	5
063	Farmed Arable Land		4	1	0	0	0	0	5
064	Farm Buildings		4	1	0	0	0	0	5
109	Grazing		2	0	0	0	1	0	5
112	Grazing		2	0	0	0	1	0	5
131	Nether Langwith Quarry Quarry into Permian Cadeby Formation dolostone ('Magnesian Limestone').		2	0	0	0	2	3	5

INVENTORY MAP REFERENCE	DESCRIPTION / EVIDENCE	NPPF (2021) CRITERIA FOR LOCAL GREEN SPACE ASSESSMENT							TOTAL /25
		LOCAL: BOUNDED, NOT EXTENSIVE YES/NO	PROXIMITY 0 - 5	SPECIAL TO COMMUNITY (<10)			LOCAL SIGNIFICANCE (<10)		
				BEAUTY 0 - 3	TRANQUIL 0 - 2	REC. VALUE 0 - 5	HISTORY 0 - 5	WILDLIFE 0 - 5	
	Local Geological Site (NoLGS14; Notts. Biological and Geological records Centre designation) for stratigraphy, lithology and fossils. Quarry has been mothballed for several years but has permission (2021) for working to re-start and to be extended to the west (plots 132 and 133).								
136	Top Farmstead		3	0	0	0	2	0	5
089	Arable field [Notts Historic Environment Record monument L4429 earthworks and cropmark (linear features), but no visible evidence]		1	1	0	0	1	1	4
113	Farmed Arable Land		2	0	0	1	0	1	4
114	Farmed Arable Land		2	0	0	1	0	1	4
116	Farmed Arable Land		2	0	0	1	0	1	4
117	Farmed Arable Land		2	0	0	1	0	1	4
052	Corner of a large arable field (the rest is in Cuckney parish) with a small area of deciduous woodland		0	1	1	0	0	2	3
123	Evidence of Quarry Operations Spoil piles and fencing		2	0	0	0	0	1	3
124	Evidence of Quarry Operations Spoil piles and fencing		2	0	0	0	0	1	3
128	Evidence of Quarry Operations Spoil piles and fencing		2	0	0	0	0	1	3
129	Evidence of Quarry Operations Spoil piles and fencing		2	0	0	0	0	1	3
130	Evidence of Quarry Operations Spoil piles and fencing		2	0	0	0	0	1	3
132	Evidence of Quarry Operations Spoil piles and fencing		2	0	0	0	0	1	3
133	Evidence of Quarry Operations Spoil piles and fencing		2	0	0	0	0	1	3
028	Arable Farm Land		0	1	0	0	0	1	2
029	Arable Farm Land		0	1	0	0	0	1	2
030	Arable Farm Land		0	1	0	0	0	1	2
031	Arable Farm Land		0	1	0	0	0	1	2
032	Arable Farm Land		0	1	0	0	0	1	2
033	Arable Farm Land		0	1	0	0	0	1	2
034	Arable Farm Land		0	1	0	0	0	1	2
042	Arable Farm Land		0	1	0	0	0	1	2
001	Arable Farm Land		0	0	0	0	0	1	1
003	Arable Farm Land		0	0	0	0	0	1	1
004	Arable Farm Land		0	0	0	0	0	1	1
005	Arable Farm Land		0	0	0	0	0	1	1
008	Arable Farm Land		0	0	0	0	0	1	1

