

# LIDL - Store to Site Ratios

Shown : Total site area and building footprint size, approx. ratios.

In recognition of the Lidl representation during the hearing, we have re-drawn site boundaries to include ancillary landscaping, loading etc.

1 West End Lane, New Rossington, Doncaster DN11 0FA (Ratio – 1:2.5)



Unit 1, London Road Northern Tower, Retford DN22 6DS (Ratio – 1:3)





Wilford Ln, West Bridgford, Nottingham NG2 7RN (Ratio – 1:3.3 NOTE – site shared with others, so ratio falls if allowance made for Lidl externals only)

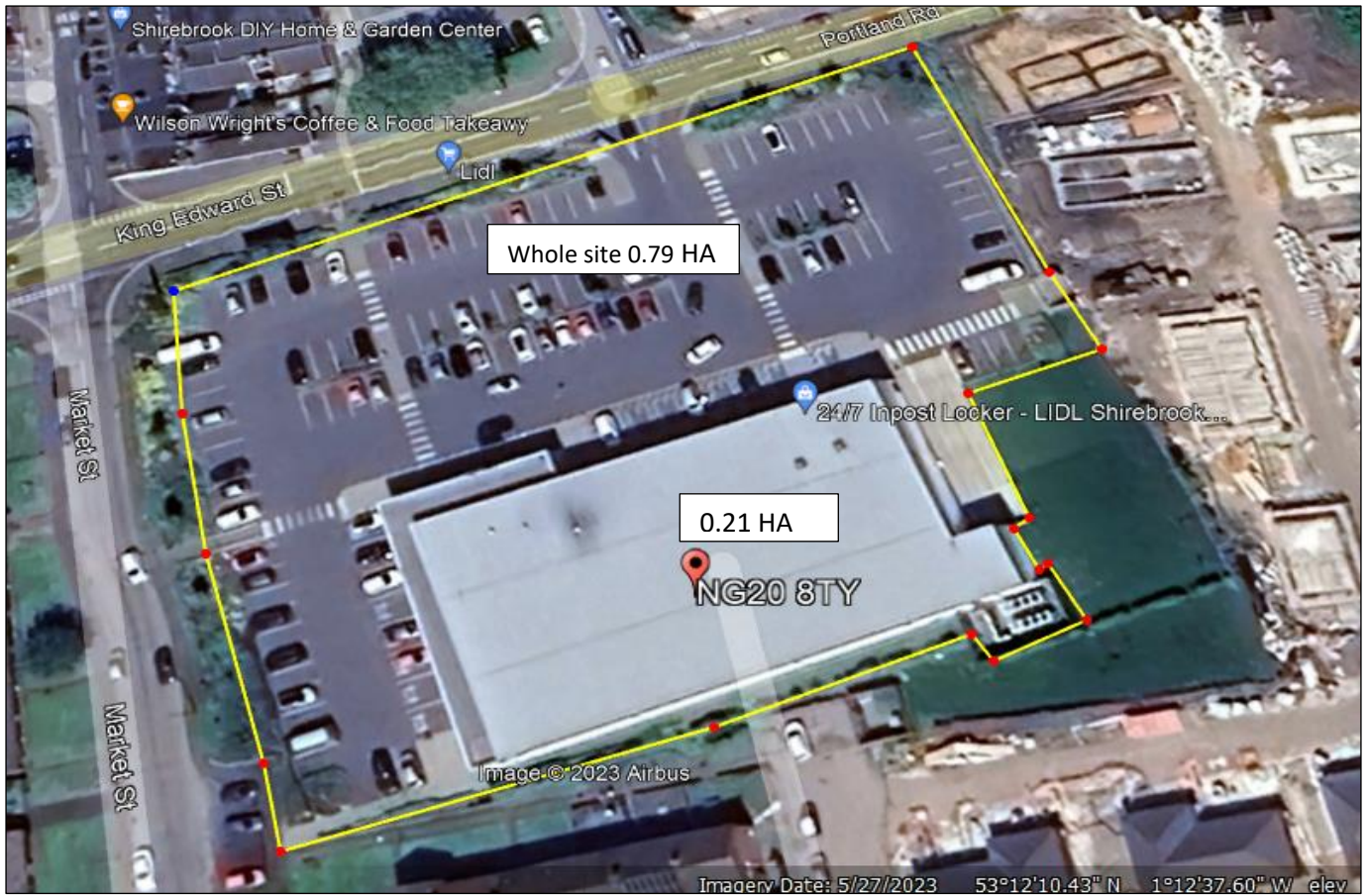


Chapel Ln, Bingham, Nottingham NG13 8GF (Ratio – 1:2.5)





8 Portland Rd, Shirebrook, Mansfield NG20 8TY (Ratio – 1:2.5)



17 Masbrough St, Rotherham S60 1EX (Ratio – 1:2)





Leeming Ln S, Mansfield Woodhouse, Mansfield NG19 9AQ (Ratio – 1:1.5)



Askern Rd, Bentley, Doncaster DN5 0EW (Ratio – 1:2)

