

Bassetlaw District Council response to Inspectors Action List

Action 72 - Matter 12 – ST50 Climate Change

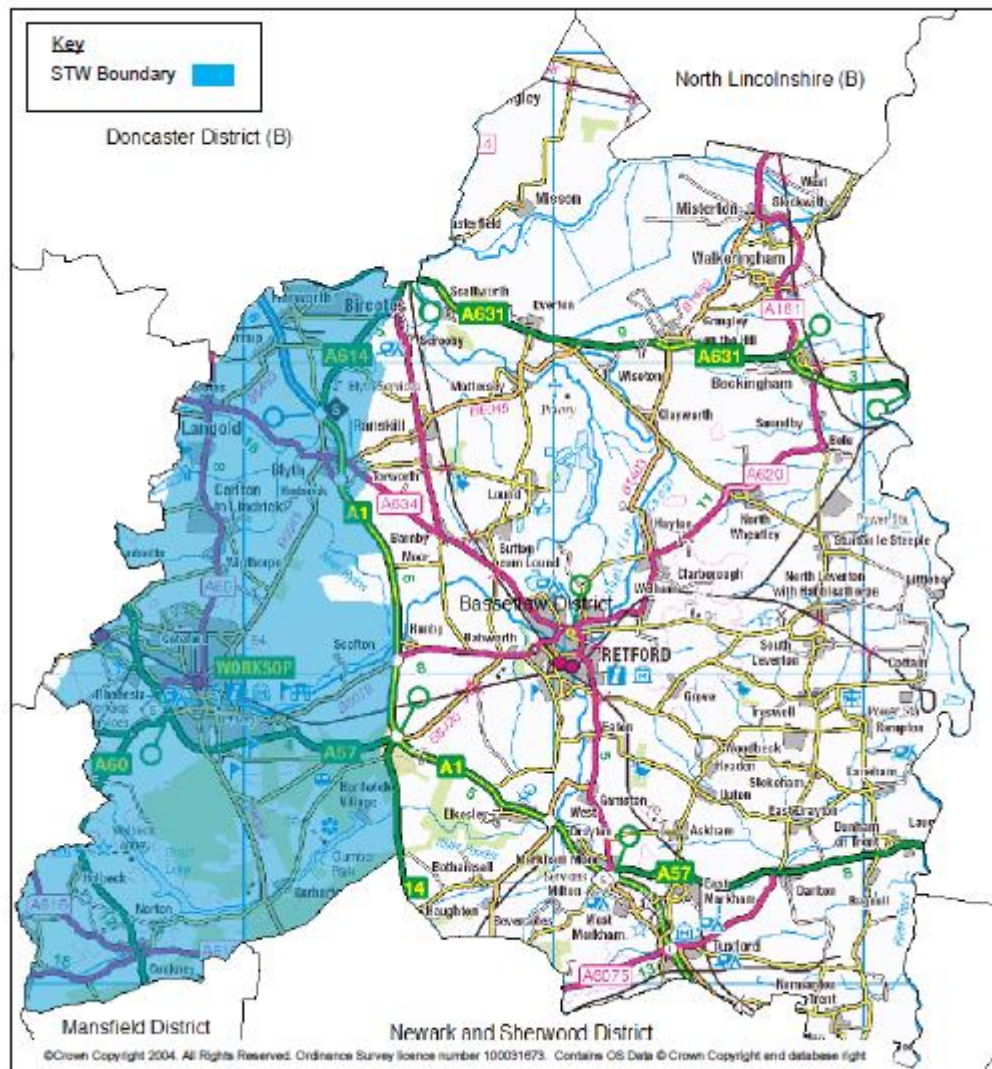
BDC to provide a map showing the areas covered by Anglian Water and Severn Trent and highlight their responsibilities (including surface water and waste water, stress areas and drought areas as detailed by BDC).

Map to form part of Justification note for Inspector to explain the 110L per day requirements as set out in ST50 (part 2 d).

BDC Response

Figure 1 below shows the extent of the water supply service area for Severn Trent within Bassetlaw. Anglian Water covers the rest of the District. The sewerage operation for the whole district is covered by Severn Trent Water.

Figure 1: Severn Trent Water water supply Boundary within Bassetlaw



As the Local Plan has progressed the Environment Agency has updated 'Water stressed areas – final classification', with the most up to date classification being published in 2021 <https://www.gov.uk/government/publications/water-stressed-areas-2021-classification> .

Serious water stress is defined in the Water Industry (Prescribed Conditions) Regulations 1999 as where 'the current household demand for water is a high proportion of the current effective rainfall which is available to meet that demand; or, the future household demand for water is likely to be a high proportion of the effective rainfall which is likely to be available to meet that demand'.

The previous classification in 2013 identified Anglian Water as being an area of serious water stress but not Severn Trent. The 2021 report confirms that Anglian Water is still determined to be an area of serious water stress but also identifies that Severn Trent Water – excluding Chester zone, is classified as seriously water stressed (from 1 July 2021).

The second paragraph of the classification's Introduction states 'Local authorities can use the water stress determination to inform whether they can require the tighter standard of 110 litres per head per day in new developments. Otherwise the use of the water stress determination is only to allow water companies to consider compulsory metering in their water resources management plans. It must not be used for other purposes such as development planning or water resources planning.'

On that basis the Council consider Policy ST50 Part 2d) that requires new residential development to meet the tighter Building Regulations optional requirement of 110 litres per person/per day to be justified.

However, we acknowledge that the supporting text is inaccurate so would suggest the following changes:

10.1.20 ~~Most of~~ The District's water supply is served by Anglian Water, ~~with parts served and~~ by Severn Trent Water. In terms of waste water, the District is served by Severn Trent Water.

10.1.21 The Environment Agency advises that areas identified as 'Serious' in the Water Stress Area Classification ~~2013-2021~~⁹, should be designated as 'Areas of serious water stress' for the purposes of Regulation 4 of the Water Industry (Prescribed Condition) Regulation 1999 (as amended). This includes the areas covered by both water supply providers Anglian Water, therefore ~~the majority of~~ Bassetlaw is an area of serious water stress. This means there is pressure on drinking water resources and implications for water quality, particularly in drought conditions. Anglian Water has identified a risk to long term supply and demand in the strategic grid from 2020.

10.1.22 Severn Trent Water's Water Resource Management Plan 2019¹⁰ identifies that 'measures such as local flow support, river restoration measures to improve environmental resilience, catchment and partnership solutions or localised demand management will help us mitigate against the risk of deterioration'.

10.1.23 ~~Although the small part of the District covered by Severn Trent Water is not water stressed,~~ Undoubtedly requiring water efficiency measures District wide will have a positive outcome on climate change adaptation, future water supplies, effects of abstraction and prevent future deterioration from occurring.

10.1.24 On that basis, Policy ST50 includes the tighter optional water efficiency requirement for residential development: of 110 litres per person per day, including five litres for external water use.