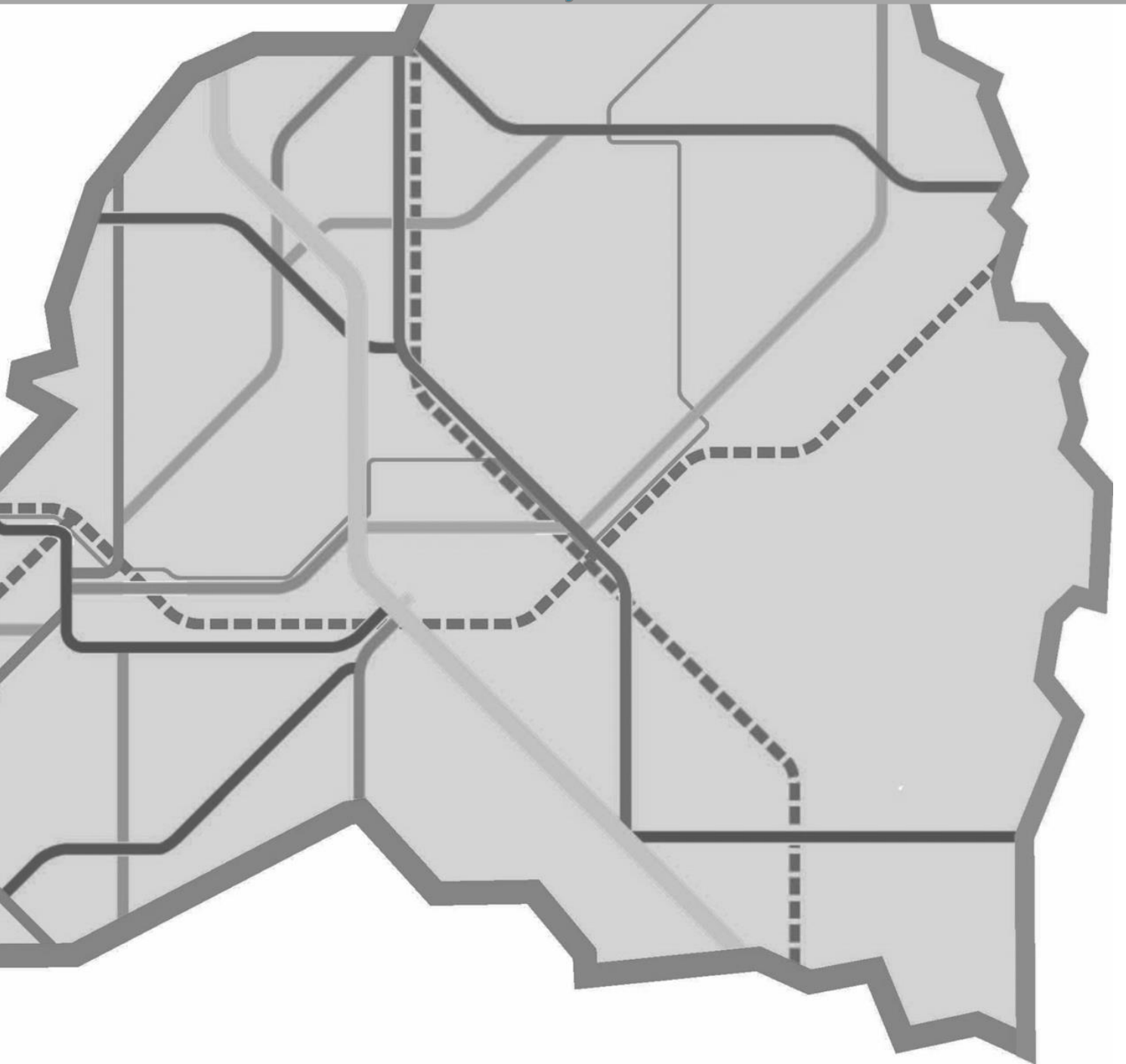


Duty-to-Cooperate Compliance Statement

Bassetlaw Local Plan 2020-2038:

Publication Version Update

July 2022



Bassetlaw
DISTRICT COUNCIL
— North Nottinghamshire —

Contents

1. Introduction	3
Strategic Context.....	4
Figure 1: Bassetlaw's Strategic Context.....	5
Legal Compliance	5
2. Record of Meetings and Statement of Common Ground	8
3. Key Strategic Matters	10
Housing need in Bassetlaw	10
Economic Development and Apleyhead Strategic Employment Allocation	11
Former Cottam power station.....	13
Bassetlaw Garden Village	14
Worksop Central DPD	14
Infrastructure Delivery	<u>16</u>
Transport.....	<u>17</u>
Education and Health.....	<u>18</u>
Gypsy and Traveller Accommodation Needs in Bassetlaw	<u>18</u>
Protection and enhancement of the natural environment.....	<u>19</u>
Protection and enhancement of the historic environment	<u>20</u>
Education and Health Mitigation and Adaption to Climate Change	<u>20</u>
4. Evidence Produced Through Joint Working.....	<u>22</u>
Appendix 1: Record of Key Meetings/ discussions with Duty to Cooperate Organisations during the Local Plan Preparation.	22
Appendix 2: Evidence produced through Joint Working.....	35
Appendix 3: Duty to Cooperate Matrix	39

1. Introduction

- 1.1 The draft Bassetlaw Local Plan sets out the overarching spatial planning framework for the future growth and development of the District to 2038. It will play a leading role in delivering sustainable development in appropriate locations and in helping to protect the countryside, important green spaces and the built and natural environment from inappropriate development, thus enhancing the quality of life for people and communities in the district.
- 1.2 The National Planning Policy Framework 2021 (NPPF) indicates that local plan strategic policies can be produced jointly, working with neighbouring planning areas, or individually. Whilst Bassetlaw District Council has produced an individual plan which only covers Bassetlaw District, some strategic policies may impact on neighbouring local planning authority areas.
- 1.3 The NPPF indicates that local planning authorities and county councils in two-tier areas are under a duty to cooperate with each other, and with other prescribed bodies, on strategic matters that cross administrative boundaries. Strategic policy-making authorities should collaborate to identify the relevant strategic matters which they need to address in their plans. They should also engage with their local communities and relevant bodies including Local Enterprise Partnerships, Local Nature Partnerships, the Marine Management Organisation, infrastructure providers, elected Mayors and combined authorities (in cases where Mayors or combined authorities do not have plan-making powers).
- 1.4 Effective and on-going joint working between strategic policy-making authorities, such as the District Council, and relevant bodies is integral to the production of a positively prepared and justified strategy. In particular, joint working should help to determine where additional infrastructure is necessary, and whether development needs that cannot be met wholly within a particular plan area could be met elsewhere.
- 1.5 In order to demonstrate effective and on-going joint working, strategic policy-making authorities should prepare and maintain one or more statements of common ground, documenting the cross-boundary matters and/or strategic matters being addressed and progress in cooperating to address these. These should be produced using the approach set out in national Planning Practice Guidance (PPG), and be made publicly available to provide transparency. The Council has worked with neighbouring authorities and other partners to address strategic matters as evidenced by Statements of Common Ground. A full list of statements of common ground is set out in paragraph 2.7.
- 1.6 This Statement of Compliance identifies the key strategic planning matters of the Bassetlaw Local Plan and demonstrates how Bassetlaw District Council has worked with neighbouring authorities and other prescribed bodies through the plan-making process to ensure strategic planning matters have been satisfactorily addressed.

Strategic Context

- 1.7 Bassetlaw District forms a vital part of the wider Nottinghamshire and South Yorkshire sub-regional economies, and has a successful history of working in partnership to create the best conditions for economic growth across the District. The D2N2 LEP covers Bassetlaw and the local authority areas for Derby and Nottingham as well as those that sit within Nottinghamshire and Derbyshire. Bassetlaw District adjoins Nottinghamshire authorities Newark and Sherwood District and Mansfield District to the south and west. A Statement of Common Ground is in place with Mansfield in relation to their Local Plan, and the emerging Bassetlaw Local Plan, with the latter being updated to reflect recent changes.
- 1.8 The South Yorkshire Mayoral Combined Authority (MCA) includes the eight Local Authority areas of Sheffield, Rotherham, Doncaster, Barnsley, Bassetlaw, Bolsover, Chesterfield and North East Derbyshire and the relevant county councils. A Statement of Common Ground has been signed by all of the South Yorkshire MCA authorities to address strategic matters and areas of agreement. A Statement of Common Ground is also in place with Doncaster in relation to their Local Plan, and the emerging Bassetlaw Local Plan, with the latter being updated to reflect recent changes.
- 1.9 Bassetlaw district forms part of a housing market area (HMA) with Bolsover District, North East Derbyshire District, and Chesterfield Borough Council areas, as well as the respective county authorities of Nottinghamshire and Derbyshire. This is known as the Bassetlaw and North Derbyshire HMA. Each local authority has opted to produce a Local Plan independently rather than jointly. Strategic matters have been addressed collaboratively and a Joint Statement of Common Ground identifies areas of agreement between the HMA authorities. This Statement of Common Ground is currently under review to reflect the emerging Bassetlaw Local Plan and has been agreed at officer level.
- 1.10 The District currently sees the level of out-commuting to work by residents balanced by in-commuting of people from neighbouring authorities to work in the District. As a Functional Economic Market Area, Bassetlaw is broadly self-contained but has strong links to South Yorkshire, to Nottinghamshire authorities to the south and west and Derbyshire to the west.
- 1.11 To the east of Bassetlaw, across the River Trent, the district shares a substantial boundary with West Lindsey in Lincolnshire. To the north, Bassetlaw shares a relatively short border with North Lincolnshire District. A Statement of Common Ground is in place with North Lincolnshire in relation to their Local Plan. This is being updated to reflect both authority's emerging Local Plans.

- 1.12 Figure 1 illustrates the relationship between Bassetlaw District Council and the neighbouring authorities:

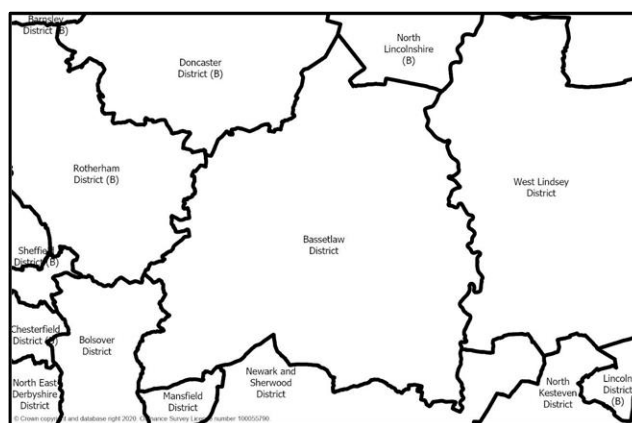


Figure 1: Bassetlaw District Council's Neighbouring Authorities.

Legal Compliance

- 1.13 The Duty to Co-operate was introduced by the Localism Act 2011, and is set out in section 33A of the Planning and Compulsory Purchase Act 2004¹. It places a legal duty on local planning authorities and county councils in England, and prescribed public bodies to engage constructively, actively and on an ongoing basis to maximise the effectiveness of local plan and marine plan preparation in the context of strategic cross boundary matters.
- 1.14 Section 33A(4) of the Planning and Compulsory Purchase Act 2004 (PCPA 2004) indicates that Local Planning Authorities have a duty to cooperate with prescribed bodies identified in paragraph (a), (b) or (c) or subsection (9) of the PCPA 2004. This approach is also a requirement of national planning policy. Paragraph 35 of the National Planning Policy Framework seeks to ensure that the Local Plan is deliverable over the plan period, and based on effective joint working on strategic matters that have been dealt with rather than deferred, as evidenced by the statement of common ground
- 1.15 In this regard, the Council and others are required to engage constructively, actively and on an ongoing basis. The NPPF states that “strategic policy-making authorities should collaborate to identify the relevant strategic matters which they need to address in their plans.”¹
- 1.16 A strategic matter is defined by the PCPA 2004 as ‘*sustainable development or use of land that has or would have a significant impact on at least two planning areas, including (in particular) sustainable development or use of land for or in connection with infrastructure that is strategic and has or would have a significant impact on at least two planning areas*’.²

¹ National Planning Policy Framework, 2021, paragraph 25

² Planning and Compulsory Purchase Act 2001, section 33A(4)(a)

- 1.17 The NPPF strengthens the concept of the Duty to Co-operate by requiring Local Planning Authorities to produce and publish one or more Statements of Common Ground (SoCG). These documents should be kept up to date by authorities and prescribed bodies and neighbouring authorities to document cross boundary and/or strategic matters and the progress made on them (paragraph 27). This is detailed further in the government's Planning Practice Guidance (PPG).
- 1.18 The Town and Country Planning (Local Planning) (England) Regulations 2012 sets out the following list of prescribed bodies; it applies to all Local Planning Authorities, County Councils and a number of public bodies:
- Nottinghamshire County Council
 - Joint Strategic Central Lincolnshire Local Planning Authority
 - North Lincolnshire Council
 - Newark and Sherwood District Council
 - Mansfield District Council
 - Bolsover District Council
 - Rotherham Metropolitan Borough Council
 - Doncaster Metropolitan Borough Council
 - Environment Agency
 - National Highways
 - Natural England
 - Historic England
 - Network Rail
 - Bassetlaw Clinical Commissioning Group (CCG)
 - Integrated Transport Authorities (Nottinghamshire County Council is the Local Transport Authority for Bassetlaw)
 - Utilities – Water Companies (Severn Trent and Anglian Water), Western Power Distribution, and Northern Powergrid
 - National Grid
 - Civil Aviation Authority
 - Marine Management Organisation
- 1.19 In addition, as described in the Town and Country Planning (Local Planning) (England) Amendment Regulations 2012 are bodies including the Local Enterprise Partnerships (LEPs) and Local Nature Partnerships that the Council 'should have regard to' in the preparation of the Local Plan. In relation to Bassetlaw DC this includes:
- D2N2 LEP – Derby, Derbyshire, Nottingham and Nottinghamshire Local Enterprise Partnership
 - South Yorkshire Mayoral Combined Authority (MCA) and the South Yorkshire LEP - Combined Authority for South Yorkshire
 - Lowland Derbyshire and Nottinghamshire Local Nature Partnership
- 1.20 Other organisations that the Council have worked with as part of the Duty to Cooperate include:
- Environment Partnerships (incl. Canal and River Trust, National Trust, Woodland Trust and Nottinghamshire Wildlife Trust)
 - Sport England

- Coal Authority
- Water Management Consortium and Doncaster East Internal Drainage Board
- Northern Rail
- Stagecoach
- Sheffield City Council
- Barnsley Metropolitan Borough Council
- North Derbyshire and Bassetlaw Housing Market Area Local Authorities: North East Derbyshire, Chesterfield Borough Council, Derbyshire County Council (the HMA also includes Bolsover District Council and Bassetlaw District Council)
- Ashfield District Council
- Broxtowe Borough Council
- Erewash Borough Council
- Gedling Borough Council
- Nottingham City Council
- Rushcliffe Borough Council
- Melton Borough Council
- Amber Valley Borough Council
- North Kesteven District Council
- South Kesteven District Council

1.21 The Council has engaged with and consulted all the prescribed bodies and other partners identified above in relation to the Local Plan. Many have identified that there are no outstanding strategic matters or cross boundary issues with regard to the Local Plan at this time. On that basis, it is not considered necessary to undertake a statement of common ground with these partners. These are:

- D2N2 LEP
- The Bassetlaw Garden Village Consultative Group
- Civil Aviation Authority
- Stagecoach
- Northern Rail
- Network Rail
- Marine Management Organisation
- Historic England
- Woodland Trust
- Lowland Derbyshire and Nottinghamshire Local Nature Partnership
- Notts Wildlife Trust
- Western Power Distribution
- Northern Powergrid
- Sport England
- Coal Authority
- Canal and River Trust
- National Grid
- BT Openreach
- Water Management Consortium and Doncaster East Internal Drainage Board

1.22 As part of the Duty to Cooperate, the Council will continue to engage with all prescribed bodies and other partnering organisations as necessary.

2. Record of Meetings and Statement of Common Ground

- 2.1 Bassetlaw District Council regularly attend multi-agency and authority group meetings, as well as meetings with specific partner organisations to discuss strategic matters and cross boundary.
- 2.2 Appendix 1-is a summary of all the key meetings and discussions with key stakeholders during the preparation of the emerging Local Plan, carried out up to 25th April 2022. These discussions related to the Local Plan and the draft Worksop Central DPD, as well as specific strategic policy matters and cross boundary issues. More recently there have been discussions and meetings relating to the preparation of specific draft Statements of Common Ground with partners.
- 2.3 Statements of Common Ground (SOCG) set out areas of agreement with key bodies and organisations in relation to the Local Plan, the wording of policies and site allocations. These provide a good indication of the ongoing contact and areas of agreements or otherwise made with Duty to Co-operate bodies during the Local Plan process on key strategic matters, or where discussions and work may be ongoing.
- 2.4 The following SOCG are [now](#) in place in response to neighbouring authorities' Local Plans or strategy preparation:
- North Derbyshire and Bassetlaw Housing Market Area (HMA); Bassetlaw DC, Bolsover DC, NE Derbyshire DC, Chesterfield DC, [May 2022](#) on the Housing Market Area;
 - Sheffield City Region MCA, NE Derbyshire DC, Bassetlaw DC, Bolsover DC, Chesterfield Borough Council, Derbyshire County Council and Highways England, October 2018 covering M1 J30 and Treble Bob Roundabout
 - [Sheffield City Region Combined Mayoral Authority, Statement of Common Ground, January 2019; authorities within South Yorkshire](#)
 - [Nottinghamshire County Council Minerals and Waste and Bassetlaw DC Statement of Common Ground, January 2020](#)
 - North Lincolnshire District Council Statement of Common Ground, [June 2022](#)
 - [Bassetlaw District Council and Doncaster Metropolitan Borough Council \(Update\) – June 2022](#)
 - [Bassetlaw District Council and Mansfield District Council \(Update\) – May 2022](#)
 - [Bassetlaw District Council and Newark and Sherwood District Council – June 2022](#)
 - [Bassetlaw District Council and Natural England – May 2022](#)
 - [Bassetlaw District Council and Environment Agency – February 2022](#)
 - [Bassetlaw District Council and Bassetlaw CCG – January 2022](#)
 - [Bassetlaw District Council and Network Rail – February 2022](#)
 - [Bassetlaw District Council and Apleyhead – May 2022](#)
 - [Bassetlaw District Council and Central Lincolnshire JSPC – July 2022](#)

- 2.5 Bassetlaw District Council's draft Statements of Common Ground have been prepared with the above statements in mind; either referring to them or updating them to avoid duplication. They are live documents which are to be kept up to date during the Plan preparation period and are now signed ahead of the plan's submission for examination.
- 2.6 In addition to the list of meetings in Appendix 1, there has been communication of an informal nature during the plan period between the Council and neighbouring Councils, County Councils and bodies in relation to the overall Local Plan, site-specific issues or specific policies. These communications have taken place through telephone calls, emails and more recently-online meetings due to COVID19 restrictions between March 2020 and July 2022.
- 2.7 Working closely with prescribed bodies and other relevant partners, the Council has drafted several Statements of Common Ground. Statements of Common Ground have been drafted, but not yet agreed and signed between agreed and signed between.
- Bassetlaw District Council and Nottinghamshire County Council (Overarching – this is separate from the Minerals and Waste SOCG in place)
 - Bassetlaw District Council and Rotherham Metropolitan Borough Council
 - Bassetlaw District Council and National Highways
 - Bassetlaw District Council and the Water Management Consortium covering Bassetlaw District
 - Bassetlaw District Council, Severn Trent and Anglian Water
 - Bassetlaw District Council and Ollerton Road, Tuxford
 - Bassetlaw District Council and Peaks Hill Farm
 - Bassetlaw District Council and Trinity Farm
 - Bassetlaw District Council and Ordsall South
 - Bassetlaw District Council and the 20 authorities in the Property Market Area (PMA) – July 2022

3. Key Strategic Matters

3.1 This document sets out the strategic matters likely to apply to the Local Plan and sets out how these matters have been discussed over the plan preparation period through partnership meetings. As such, these form the subject of the Statements of Common Ground with key bodies. Paragraph 3.2 below sets out the key strategic matters. The next section sets out the ongoing work undertaken with partners (set out in Appendix 2) to appropriately address any issues identified. It also highlights areas of agreement, or matters which require further work.

3.2 Key strategic matters of the Bassetlaw Local Plan:

- Identifying Bassetlaw's housing requirement and fully meeting the housing requirement within Bassetlaw District by 2038
- Identifying the accommodation needs of Gypsy, Travellers and fully meeting this within the District by 2038
- Identifying Bassetlaw's economic development needs and fully meeting this within Bassetlaw District by 2038
- Identification of Apleyhead Strategic Employment site allocation to meet regional/sub-regional logistics needs
- Progressing the regeneration of the former power station sites at Cottam and Marnham
- Infrastructure delivery – including health, education, transport, highways (including the A57 Improvement Plan), flood management, and utilities
- Regeneration of Worksop Central
- Promoting Vitality and Viability in all Town Centres
- Protection and enhancement of the natural and historic environment
- Mitigation and adaptation to Climate Change

Housing need in Bassetlaw

3.3 Bassetlaw DC sits within the North Derbyshire and Bassetlaw HMA. The other HMA Authorities consist of North East Derbyshire District Council, Chesterfield Borough Council, and Bolsover District Council and respective county councils. All of which are non-constituent members of the South Yorkshire MCA.

3.4 The Bassetlaw Local Plan sets out a requirement for 582 homes per annum over the Plan period, up to 2038 (10,476 dwellings from 2020 to 2038) and this will be fully met within Bassetlaw district. This is based on the results of the Bassetlaw Housing and Economic Needs Assessment Addendum (April 2022) and takes into account housing delivery trends from the past five years in Bassetlaw. This approach accords with the

- 3.5 Bassetlaw District Council has not agreed to accommodate any neighbouring authorities' housing development needs. All neighbouring Local Planning Authorities are proposing to fully meet their assessed needs. This commitment has been agreed through the signing of a Joint Statement of Common Ground between Bassetlaw District Council and the HMA Councils (being updated to inform the Bassetlaw Local Plan).
- 3.6 Through quarterly liaison meetings, the HMA authorities will continue to report housing delivery against their housing trajectory. This will ensure that each authority is appropriately monitoring its housing supply to ensure there is no shortfall across the HMA area against the objectively assessed housing need.
- 3.7 National Trust suggests that the assessment of housing needs is reviewed to achieve reduced targets that represent reasonable, sustainable growth for the district.

Economic Development and Apleyhead Strategic Employment Allocation

- 3.8 The Bassetlaw Local Plan is proposing to meet the district's employment need (196.7ha) in full by 2038 with an appropriate level of flexibility built in. This is based on a completions trend scenario and reflects the level of employment sites in the District with planning permission and that are being actively promoted. This is based on the results of the Bassetlaw Housing and Economic Needs Assessment Addendum (April 2022). Discussions with neighbouring Nottinghamshire and Derbyshire authorities and the D2N2 LEP, have not raised any concern relating to general employment sites, delivery of potential allocations and their associated infrastructure. In relation to Sheffield City Council and Rotherham Metropolitan Borough Council general employment need is currently an unresolved issue and agreement is still to be made. National Trust considers that the proposed employment supply for the district should be reviewed.
- 3.9 In addition, the Bassetlaw Local Plan proposes to allocate 118.7 hectares of land at Apleyhead on the A1/A57 junction, to the east of Worksop. The site is allocated to meet needs for regional/sub-regional large-scale logistics only. Bassetlaw DC and the D2N2 LEP consider the site will support the delivery of D2N2 LEP's Growth and Recovery Strategy including the development of growth sectors, such as digital adoption for logistics.
- 3.10 In May 2020, Bassetlaw DC along with the other constituent and non-constituent members of the South Yorkshire MCA agreed the Sheffield City Region Strategic Employment Land Appraisal (Sheffield City Region SELA). This recognised the need for the authorities to collaborate on strategic B Class needs. This included considering the potential for further land supply in Bassetlaw where strategic B8 needs could be met; so that the authority can make the most of its strategic road connectivity whilst reducing the pressure for B8 in other parts of the city region where other employment uses may be attracted.

³ <https://www.gov.uk/guidance/housing-and-economic-development-needs-assessments>

- 3.1.1 In response to the November 2020 Regulation 18 Bassetlaw Local Plan consultation the South Yorkshire MCA and the South Yorkshire authorities agreed further work would be required to justify the need for a strategic employment site in Bassetlaw. This was considered necessary to ensure the mix of uses proposed did not adversely impact on the economic strategies of neighbouring authorities and the South Yorkshire MCA/LEP.
- 3.1.2 In response, Bassetlaw DC have undertaken the A1 Corridor Logistics Assessment to evidence the approach to be taken by the Local Plan. In April 2021, Bassetlaw DC liaised with the South Yorkshire MCA and the South Yorkshire authorities to agree the brief for the Logistics Assessment. In August 2021, the draft assessment was shared with the South Yorkshire MCA and the South Yorkshire authorities. Comments made have been reflected in the final version.
- 3.1.3 The Bassetlaw A1 Corridor Logistics Assessment, 2021 identifies that a dramatic rise in demand for large scale logistics at a national level, supply side constraints on the M1, leading to the better connected and labour served areas of the A1 becoming attractive as a secondary logistics market to the M1 corridor. It concludes that the recent past rate of take up / delivery within an identified property market area under represents future need, and that a site in Bassetlaw, such as Apleyhead could contribute to meeting this future economic sub-regional/regional need for logistics by 2038 within the logistics property market area identified by Figure 2 below.

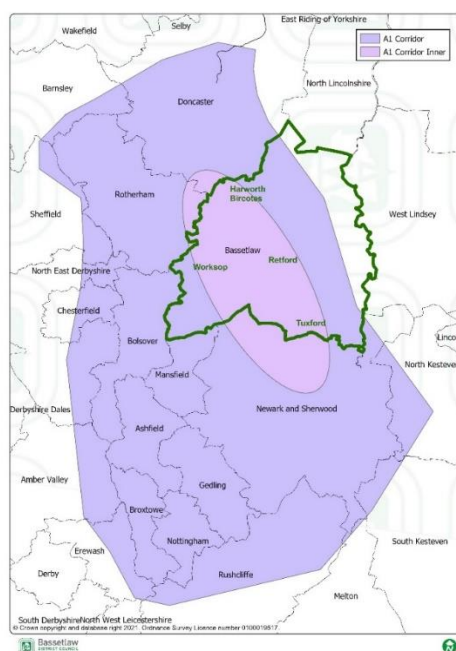


Figure 2. Logistics Property Market Area

- 3.1.4 The property market area includes 20 local authority areas. Bassetlaw DC has held duty to cooperate meetings with all authorities in the property market area. In the case of the Nottinghamshire authorities this was as part of a wider discussion with the Nottinghamshire Core and Outer HMA authorities with regard to a separate strategic distribution study for a defined part of Nottinghamshire (excluding Bassetlaw). Discussions commenced in July 2021, and have been ongoing since. The Council shared the draft logistics assessment with the authorities in August 2021.

3.15 Bassetlaw DC has agreed to ensure that, through the Local Plan, the proposed Apleyhead Strategic Employment site allocation will demonstrate the delivery of significant economic benefits to the South Yorkshire MCA/LEP and the D2N2 LEP; and will not adversely impact the delivery of their economic strategies, or those of the 20 authorities in the logistics property market area. A Statement of Common Ground has been drafted between Bassetlaw District Council and the authorities in the property market area:

- Amber Valley District Council (Signed)
- Ashfield District Council (Signed)
- Barnsley Metropolitan Borough Council (Signed)
- Bolsover District Council (Signed)
- Broxtowe District Council (Signed)
- Chesterfield Borough Council (Signed)
- Doncaster Metropolitan Borough Council (Signed)
- Erewash District Council (Signed)
- Gedling Borough Council (Signed)
- Mansfield District Council (Signed)
- Melton Borough Council (Signed)
- Newark & Sherwood District Council (Signed)
- North East Derbyshire Council (Signed)
- North Kesteven District Council (Signed)
- Nottingham City Council (Signed)
- Rotherham Metropolitan Borough Council (Agreed to Sign)
- Rushcliffe District Council (Signed)
- Sheffield City Council (Signed)
- South Kesteven District Council (Agreed to Sign)
- West Lindsey District Council (Signed)

3.16 The Bassetlaw Local Plan proposes to meet the housing needs generated by the expected additional 3,856 jobs identified for Apleyhead in the District by 2038.

3.17 The Bassetlaw Local Plan and the Infrastructure Delivery Plan set out the infrastructure needed to deliver Apleyhead. Bassetlaw DC will continue to liaise with the authorities in the property market area and infrastructure partners in relation to highways infrastructure and potential impacts on strategic and local junctions relating to the delivery of Apleyhead proposed through the Bassetlaw Local Plan.

3.18 Apleyhead will be accessed from the A57. Access arrangements and the potential impacts upon the A57 is currently an unresolved issue and agreement is still to be made with Nottinghamshire County Council as the Local Highways Authority, National Highways, and Rotherham MBC as the neighbouring authority and Sheffield City Council and Derbyshire County Council as interested authorities.

Former Cottam power station

3.19 The Former Cottam Power Station is located on Bassetlaw district's boundary with West Lindsey district in Lincolnshire, adjacent to the River Trent. The Cottam Priority Regeneration Area comprises the 348 ha former Cottam Power Station and associated lagoons. The site has been identified as a broad location for growth in the future in the Bassetlaw Local Plan.

3.20 The site's proximity to the River Trent means that the site partly lies within Flood Zone 3 and Flood Zone 2, although the land benefits from flood defences. The site has a

legacy of contamination due to its former use as a coal fired power station and associated infrastructure. Several organisations, including the National Grid, also have infrastructure assets on or that cross the site. The site's location within a rural part of the District means that transport accessibility is a key issue.

- 3.2¹ The Council supports the site's remediation and positive future re-use, but there is still a lot of work to do before the Local Plan can be reliant on the delivery of the site to meet its development needs. The Council will continue to work with strategic partners including the Environment Agency; Nottinghamshire County Council (for highways/minerals and other infrastructure matters); National Grid; the neighbouring authority of West Lindsey as well as the landowners and future developers, to agree a masterplan framework, phasing and infrastructure plan for this key regeneration site. This will inform future Local Plan reviews.

Bassetlaw Garden Village

- 3.2² In March 2022, one of the two land owners of the Garden Village has withdrawn their land from the Local Plan process. Further information can be found here: <https://www.bassetlaw.gov.uk/media-centre/news/latest-news/local-plan-submission-moved-to-june-to-allow-further-consultation-after-landowner-pulls-out-of-garden-village/>
- 3.2³ As such, the Garden Village no longer features as an allocation within the draft Bassetlaw Local Plan. The Garden Village was proposed as a self-contained new settlement for 10ha of employment land and 4000 homes, to be delivered over two plan periods. It was not required to meet the housing or employment needs of any other settlement in the district or to meet such needs from neighbouring authorities. The removal of the employment land and associated jobs at the Garden Village therefore means that the new homes are not needed either. It is expected that the housing need as identified within the Addendum Document (January 2022), can be met through the proposed housing supply, and as such, no additional sites are required to be allocated going forward.

Workshop Central DPD

- 3.2⁴ The Local Plan identifies Worksop Town Centre and the surrounding area as a Priority Regeneration Area. Delivery of the regeneration and growth strategy for the area was set out in the Worksop Town Centre Masterplan vision, adopted by the Council in March 2021. This involved partnership working with a number of statutory partners. The Council has continued to work closely with these partners and a number of others to produce the draft Regulation 18 Worksop Central Development Plan Document that underwent consultation in June 2021. Key priorities and issues affecting the area include:
- addressing flood risk - parts of the Town Centre and outlying areas are located within the highest flood risk areas (Flood zones 3a and 3b): evidence/advice provided by Environment Agency, Nottinghamshire CC Lead Local Flood Authority, Severn Trent will contribute towards producing a more detailed strategic outline business case to underpin a flood management scheme for the town and inform future flood risk assessments for the DPD area

- conserving and enhancing heritage assets – Worksop and Mr Straws Conservation Areas and a number of Listed Buildings, a Scheduled Ancient Monument, and archaeology: evidence/advice provided by Nottinghamshire CC Historic Environment Record, Historic England, Lincolnshire CC – Archaeology.
- protecting and enhancing biodiversity, and green and blue infrastructure – the River Ryton, Chesterfield Canal Local Wildlife Site, Sandhill Lake Local Wildlife Site, The Canch and Castle Hill Scheduled Monument: evidence/advice provided by Natural England, Nottinghamshire Wildlife Trust, Canal and River Trust, Chesterfield Canal Trust, Environment Agency, Anglian Water, Severn Trent.
- diversifying the local economic and educational and training offer by providing opportunities for local business growth: guidance/advice provided by D2N2 LEP, East Midlands Chamber of Commerce.
- supporting the delivery of the Worksop Central housing requirement in the Local Plan for 725 units: guidance/advice provided by Homes England, Western Power Distribution, Severn Trent, Open reach, Nottinghamshire Police, Nottinghamshire CC Adult Care
- delivering transport improvements to facilitate traffic movement, promote walking and cycling and public transport use: evidence/advice provided by Nottinghamshire CC Highways Authority, National Highways, Sustrans, Stagecoach, Network Rail and Northern Rail.

3.25 The Council is committed to working with partners to progress the Worksop Central DPD and its evidence base particularly relating to the above strategic matters.

Infrastructure Delivery

3.26 In accordance with the NPPF, the Infrastructure Delivery Plan (IDP) identifies the infrastructure considered necessary to support future growth identified by the Local Plan, when and how it will be delivered. The IDP also sets out a method for prioritising the projects to be funded from developer contributions, the Community Infrastructure Levy charge (CIL) and other funding streams. As a 'living document', the IDP will continue to be updated at least annually to reflect updated evidence.

3.27 The Council has worked with infrastructure partners to identify infrastructure requirements and ensure they are satisfactorily addressed in the Bassetlaw Local Plan and the Infrastructure Delivery Plan. Where relevant, draft Statements of Common Ground have been agreed between the Council and these organisations regarding infrastructure delivery.

Transport

- 3.28 Bassetlaw District Council has worked with Nottinghamshire County Council (the Local Highway Authority) and National Highways in gathering evidence to assess the impacts of growth in Bassetlaw upon the transport network. The Bassetlaw Transport Study (updated 2022) has identified at a strategic level, impacts on existing links and junctions that would be above their operating capacity in 2038 with proposed new development on site allocations identified in Bassetlaw Local Plan. Mitigation measures have been identified that seek to minimise impacts of growth to a level that would have been expected as a result of background growth without development (2037 reference case). Nottinghamshire County Council, as the Local Highways Authority have accepted the Bassetlaw Transport Study in relation to highway matters associated with the Local Plan including any mitigation identified as being necessary to address identified impacts associated with Local Plan growth.
- 3.29 The Council is also working closely with relevant partners on the development of an A57 Improvement Plan for part of the A57 main road network between the A1 at Apleyhead in Bassetlaw to the A1/M1 junction in Rotherham. An Improvement Plan for this stretch of road formed part of the recommendations from the Bassetlaw Transport Study 2022. The Improvement Plan will sit outside the Local Plan process. However, agreement to undertake joint working will be set out within the relevant Statements of Common Ground being prepared with the following partners. Other partners will be introduced as the project evolves and the scope of the work is better understood:
- Nottinghamshire County Council
 - Rotherham Borough Council
 - National Highways
 - Derbyshire County Council
- 3.30 National Trust are very keen to understand more about the likelihood and level of impact of increased traffic on the A57, including potential road widening and any potential impact on Clumber Park. National Trust will be engaged in the process of the A57 Improvement Plan as the project evolves.
- 3.31 More localised Transport Assessments for Worksop and Retford have identified the transport infrastructure required in relation to the site specific site allocations within those settlements. These are currently being reviewed following feedback from statutory consultees. The District Council will continue to work closely with relevant partners to resolve any outstanding matters in relation to these assessments.
- 3.32 The allocation of Fairygrove site in Retford is likely to impact the nearby Level Crossing due to increased vehicle movements in the area and the creation of an access to the site. In addition, the ongoing work for Worksop Town Centre is likely to impact the Level Crossing at Worksop Station. As such, Network Rail will be closely involved in the continued preparation of the DPD.

3.33 Despite some unresolved matters relating to Transport/Highways, Bassetlaw District Council is satisfied that the evidence undertaken sufficiently assesses and identifies infrastructure requirements relating to all site allocations included in Bassetlaw Local Plan, and it fully accords with the NPPF and Plan Making PPG.

3.34 With regard to evidence, paragraph 038 Reference ID: 61-038-20190315 of the Plan Making PPG states:

Assessments should be proportionate, and should not repeat policy assessment that has already been undertaken. Wherever possible, strategic policy-making authorities should consider how the preparation of any assessment will contribute to the plan's evidence base. The process should be started early in the plan-making process and key stakeholders should be consulted in identifying the issues and any relevant data that the assessment must cover.

Education and Health

3.35 Nottinghamshire County Council, as the Local Education Authority, has a statutory responsibility to ensure there is sufficient provision for school places to meet the needs of pupils in Nottinghamshire. This responsibility includes managing the supply and demand of primary and secondary school places. Bassetlaw District Council has worked with Nottinghamshire County Council Education to identify education requirements associated with proposed site allocations. No insurmountable school capacity issues have been identified as a result of the proposed levels of growth in the Local Plan.

3.36 However, Nottinghamshire CC identify that land should be safeguarded at two strategic sites to ensure provision can be delivered in the long term to meet the needs generated by the Local Plan growth. These include a secondary school satellite at Peaks Hill Farm, Worksop; and a primary school at Ordsall South, Retford. The Infrastructure Delivery Plan identifies the specific requirements for each site allocation, including where developer contributions are expected to be sought for education. **The provisions within the Infrastructure Delivery Plan have been agreed with NCC.**

3.37 Bassetlaw District Council has worked with NHS Bassetlaw CCG as the Local Health Authority for Bassetlaw district to identify acute and primary care health requirements associated with the proposed site allocations. Bassetlaw CCG identify that a health hub should be provided at Ordsall South, Retford to meet needs generated by that development. The Infrastructure Delivery Plan identifies the specific requirements for each site allocation in this plan period, including where developer contributions are expected to be sought for primary and acute care at Bassetlaw Hospital.

Gypsy and Traveller Accommodation Needs in Bassetlaw

3.38 There is a need for a minimum of 25 additional pitches by 2029 with a further 24 pitches by 2038. It does not identify a need for sites for Travelling Showpeople. It has been agreed through Duty to Cooperate that the Council and neighbouring authorities are able to meet their own needs in full with no dependence on neighbouring areas.

3.39 To support the delivery of the spatial strategy and to ensure that these the identified needs for the first five years of the plan are met in full, Policy ST32 seeks to protect

existing authorised sites for up to the number of pitches and/or caravans currently authorised and licensed, and allocate new sites to meet identified needs to 2029. Policy ST32 will address additional needs thereafter, by working with the Gypsy and Traveller community to meet their needs appropriately, by setting out the criteria against which planning applications for Gypsy and Traveller sites will be determined.

Protection and enhancement of the natural environment

- 3.40 In January 2020, at Regulation 18 stage of the Local Plan, Natural England expressed concern about the potential impacts of new residential development at Bassetlaw Garden Village on Clumber Park Site of Special Scientific Interest (SSSI) in relation to recreational impact. Natural England also identified concerns about potential recreational impact from development at the Garden Village on Birklands and Bilhaugh SAC in Newark and Sherwood District.
- 3.41 In response, Bassetlaw DC commissioned Recreational Impact Assessments (RIA) for Clumber Park SSSI and Birklands and Bilhaugh SAC/ Sherwood Forest NNR, in partnership with Newark & Sherwood Council in November 2020.
- 3.42 The RIA for Clumber Park recommended a mitigation strategy to be adopted to manage any recreational impact upon Clumber Park SSSI. Due to the withdrawal of the Garden Village as a site allocation, Natural England confirmed that a strategic solution would no longer be required, and that mitigation could be provided on a site by site basis. A detailed Technical Note on Recreation Impact is available to support the Draft Local Plan. [National Trust has recommended that the Council considers reinstating a strategic solution for mitigation.](#)
- 3.43 Bassetlaw District sits within the River Trent River Regional Flood and Coast Committee (RFCC), set up by the EA under the Flood and Water Management Act 2010 to oversee coherent plans for managing flood risks and provide the link between the EA, Local Lead Flood Authority (LLFA), and Canal and River Trust. Nottinghamshire County Council has the responsibility as the Local Lead Flood Authority (LLFA) for the area and sits on this Committee. The District is served by two Internal Drainage Boards including Trent Valley Internal Drainage Board (IDB) and Isle of Axholme and North Nottinghamshire Water Level Management Board.
- 3.44 Trent Valley Internal Drainage Board (TVIDB) covers an area of low-lying land from the west of Gainsborough, straddling the River Trent and its tributaries, down to the south of Nottingham, a total of 44,093ha. The Board maintains 778km of watercourse and operates 18 pumping stations to ensure that people are safe, and the risk of flooding is greatly reduced.
- 3.45 The Isle of Axholme and North Nottinghamshire Water Level Management Board covers an area of 28,737ha running from the Ouse following the west bank of the Trent moving south west down to Markham Moor. The Board maintains 450km of watercourse and operate 20 pumping stations to ensure that people are safe, and the risk of flooding is greatly reduced.
- 3.46 In line with Flood and Water Management Act 2010, both parties are required to work together to reduce flood risk through a series of evidence documents which inform policy

and decision making in the District. These include discussion and consultation on the Council's Strategic Flood Risk Assessments and emerging flooding and water related policies.

- 3.47 From an early stage in the Local Plan process, BDC engaged the Internal Drainage Boards through the preparation of the Local Plan. All parties have and will continue to liaise on an ongoing basis.

Protection and enhancement of the historic environment

- 3.48 At the November 2020 Regulation 18 Bassetlaw Local Plan Consultation, Historic England raised concern regarding the consideration of heritage assets during the plan-making process. The information set out in the Council's Land Availability Assessment and Sustainability Appraisal contained an assessment of the impact upon heritage assets but Historic England indicated that the nature of potential impact on the historic environment lacked clarity and it was unclear the measures to be put in place to ensure that harm is minimised.

- 3.49 To ensure the impact on the significance of designated heritage assets has been appropriately considered Historic England recommended that further assessment work be undertaken in the SA, and/or within a Heritage Paper as part of the evidence for the Local Plan to ensure that it meets the requirements of the NPPF.

- 3.50 The Council has had several discussions with Historic England and Lincolnshire Archaeology to agree the approach to the assessment of heritage assets within a Heritage Assessment. This has now been agreed with both parties and the work is now complete. The Site Assessments (Historic Environment) Methodology Update January 2022⁴ forms part of the evidence for the Bassetlaw Local Plan.

- 3.51 Both parties have agreed that, the Local Plan clearly identifies the next steps to be taken to the historic environment, and they are supportive of moving the Local Plan to submission. This has been confirmed in Historic England's response to the Bassetlaw Local Plan Publication and Addendum.

Education and Health Mitigation and Adaption to Climate Change

- 3.52 Tackling climate change is a cross cutting theme across several policy areas of the Bassetlaw Local Plan. The Council has worked with partners to understand and ensure plans appropriately help mitigate the effects of climate change.

- 3.53 The Environment Agency and Nottinghamshire County Council, as the Lead Local Flood Authority, have been directly involved in the development of a flood mitigation scheme for Worksop Town Centre and the Ryton catchment. Land has been safeguarded for a flood mitigation scheme in Bassetlaw Local Plan. The Council will continue to work with its partners to agree the outline business case for the flood mitigation scheme. Details of the mitigation scheme will be included in Worksop Central DPD.

⁴ <https://www.bassetlaw.gov.uk/media/6697/cd-018-updated-heritage-methodology-report-jan-2022-v1.pdf>

- | 3.54 Significant opportunities exist through the redevelopment of the former High Marnham Power Station to reduce carbon emissions, energy demand and excess energy waste through on-site efficiencies and through the sites' circular energy potential. Development that generates, shares, transmits and/or stores renewable energy will be supported in principle at an Area of Best Fit at the former power station site, identified as a result of its ability to connect to the existing national electricity grid infrastructure.
- | 35.55 Further detail and information on Climate Change adaption and mitigation measures will be provided within the Councils Greening Bassetlaw SPD to be published following adoption of the Local Plan.

4. Evidence Produced Through Joint Working

4.1 The Council has worked collaboratively with organisations and neighbouring authorities to produce a number of evidence base documents to support the Local Plan on a range of strategic matters; these are ongoing and some are continuing to be updated as set out in Appendix 2.

4.2 Partners have also been involved in the site assessment process to ensure sites proposed for allocation are capable of delivering sustainable development. The following partners were consulted on relevant sites considered through the site selection process for the Local Plan and/or the Worksop Central DPD:

- Severn Trent Water
- Water Management Consortium and Doncaster East Internal Drainage Board
- Network Rail
- National Highways
- The Coal Authority
- Anglian Water
- Natural England
- Historic England
- Woodland Trust
- Stagecoach
- Sport England
- Sustrans
- Nottinghamshire Wildlife Trust
- Western Power Distribution
- Northern Power Grid
- NHS Bassetlaw CCG
- Open Reach
- National Grid
- Nottinghamshire County Council
- Lincolnshire Archaeology
- Environment Agency
- Canal and River Trust

Appendix 1: Record of Key Meetings/ discussions with Duty to Cooperate Organisations during the Local Plan Preparation.

Authority/ organisation	Reason(s) for DTC	Date of meeting(s)
Bassetlaw Garden Village Consultative Group	<ul style="list-style-type: none"> To identify and understand the issues and opportunities of a Garden Village in this location 	7/3/2020 12/3/2020 31/7/2020 6/8/2020 13/8/2020 21/10/2020 11/6/2021
Bolsover District Council	<ul style="list-style-type: none"> Local Plan Timetable and update Local Plan evidence base update Updating HMA SOCG Bassetlaw Local Plan spatial strategy Recreational Impact Assessment for Clumber Park SSSI, Birklands and Bilhaugh SAC/ Sherwood Forest NNR Apleyhead strategic employment allocation 	12/05/2016 09/12/2016 30/01/2017 20/8/2019 22/1/2020 22/4/2020 21/10/2020 7/4/2021 25/8/2021 30/11/2021 Ongoing
Chesterfield Borough Council	<ul style="list-style-type: none"> Local Plan Timetable and update Local Plan evidence base update Updating HMA SOCG Bassetlaw Local Plan spatial strategy 	12/05/2016 09/12/2016 30/01/2017 20/8/2019 22/1/2020 22/4/2020

Authority/ organisation	Reason(s) for DTC	Date of meeting(s)
	<ul style="list-style-type: none"> Apleyhead strategic employment allocation 	7/4/2021 25/8/2021 30/11/2021 Ongoing
North East Derbyshire Council	<ul style="list-style-type: none"> Local Plan Timetable and update Local Plan evidence base update Joint HMA Statement of Common Ground Update Bassetlaw Local Plan spatial strategy Apleyhead strategic employment allocation 	12/05/2016 09/12/2016 30/01/2017 20/8/2019 22/1/2020 22/4/2020 7/4/2021 25/8/2021 30/11/2021 Ongoing
Doncaster Metropolitan Borough Council	<ul style="list-style-type: none"> Local Plan Timetable and update. Local Plan evidence base update The wider impacts of future development at Harworth and Bircotes and Bawtry. Joint Transport work on local highway impacts Bassetlaw Local Plan spatial strategy Apleyhead strategic employment allocation 	21/12/2015 23/08/2016 31/03/2017 11/9/2019 20/9/2019 20/1/2022 Ongoing Meetings have also been held with South Yorkshire MCA of which Doncaster MBC is a member
Mansfield District Council	<ul style="list-style-type: none"> Local Plan Timetable and update. 	29/04/2016

Authority/ organisation	Reason(s) for DTC	Date of meeting(s)
	<ul style="list-style-type: none"> Local Plan evidence base update Recreational Impact Assessment for Clumber Park SSSI, Birklands and Bilhaugh SAC/ Sherwood Forest NNR The relationship between development in the Norton and Cuckney parish, including Welbeck Colliery, and service provision in Market Warsop 	07/04/2017 3/10/2019 28/11/2019 Ongoing
North Lincolnshire Council	<ul style="list-style-type: none"> Local Plan Timetable and update Local Plan evidence base update <u>To discuss significant new housing and employment developments in North Lincolnshire.</u> <u>General DTC cross-boundary discussion, update on Local Plans and a discussion on the draft SoCG.</u> 	16/12/2016 22/8/2019 Ongoing <u>27/06/22</u>
West Lindsey District Council (Central Lincolnshire Joint Planning Authority)	<ul style="list-style-type: none"> Local Plan Timetable and update Local Plan evidence base update Neighbouring Authority – cross boundary issues on Transport 	21/11/2016 10/1/2020 15/9/2021 Ongoing
Newark and Sherwood District Council	<ul style="list-style-type: none"> Local Plan Timetable and update Local Plan evidence base update Neighbouring Authority – cross boundary issues on Transport, in particular the A1. Recreational Impact Assessment for Clumber Park SSSI, Birklands and Bilhaugh SAC/ Sherwood Forest NNR 	11/05/2016 04/08/2017 03/02/2018 07/10/2020 17/11/2020 14/7/2021 15/10/2021 23/11/2021

Authority/ organisation	Reason(s) for DTC	Date of meeting(s)
		30/11/2021 13/1/2022 10/2/2022 Ongoing
Nottinghamshire County Council	<ul style="list-style-type: none"> • Local Plan Timetable and update • Local Plan evidence base update • Minerals Local Plan update • Bassetlaw Transport Assessment and public highway advice • Education information • Health Information • Flood data • Gypsy and Traveller Accommodation • Bassetlaw Garden Village Consultative Group member • Nottinghamshire Bus Strategy Improvement Plan • Nottinghamshire Core and Outer HMA Strategic Distribution Study 	11/12/2017 05/06/2018 29/06/2018 22/5/2019 25/6/2019 25/9/2019 17/10/2019 08/01/2020 21/8/2020 15/10/2020 19/11/2020 11/1/2021 2/02/2021 4/2/2021 15/2/2021 17/2/2021 09/04/2021 11/6/2021 30/06/2021 5/07/2021 13/07/2021 15/07/2021

Authority/ organisation	Reason(s) for DTC	Date of meeting(s)
		25/9/2021 14/10/2021 25/11/2021 8/2/2022 11/2/2022 14/2/2022 Ongoing
Rotherham Metropolitan Borough Council	<ul style="list-style-type: none"> Local Plan Timetable and update Local Plan evidence base update Bassetlaw Local Plan spatial strategy Recreational Impact Assessment for Clumber Park SSSI, Birklands and Bilhaugh SAC/ Sherwood Forest NNR <u>Apleyhead strategic employment allocation</u> <u>Statements of common ground including the Bassetlaw Local Plan / Rotherham SOCG, A57 SOCG and Property Market Area SOCG. Agreed to incorporate the A57 SOCG into the Local Plan SOCG.</u> 	10/12/2015 10/11/2017 11/10/2019 18/3/2021 Ongoing <u>01/07/2022</u> Meetings have also been held with South Yorkshire MCA of which Rotherham MBC is a member
Environment Agency	<ul style="list-style-type: none"> Local Plan Timetable and update Flooding Risks Water Quality Water Management 	18/12/2015 11/01/2016 24/10/2017 Meetings have taken place from

Authority/ organisation	Reason(s) for DTC	Date of meeting(s)
	<ul style="list-style-type: none"> • Bassetlaw LP Strategic Flood Risk Assessment (SFRA) • Bassetlaw Garden Village Consultative Group member • Worksop town centre flood mitigation • Evidence base updates 	<p>March 2020 to June 2021 between JBA Consultants, BDC, and the EA regarding the Bassetlaw SFRA Level 1 and 2</p> <p>7/4/2021</p> <p>11/5/2021</p> <p>24/5/2021</p> <p>11/6/2021</p> <p>12/07/2021</p> <p>02/08/2021</p> <p>22/9/2021</p> <p>3/2/2022</p> <p>Ongoing</p>
Network Rail	<ul style="list-style-type: none"> • Local Plan Timetable and update • Local Plan evidence base update • Rail Services and Franchises • Existing rail service provision • Robin Hood Line • Retford Train Station • Shireoaks Train Station • Future services investment • Bassetlaw Garden Village Consultative Group member • Level crossing impacts 	<p>23/06/2016</p> <p>21/08/2017</p> <p>14/9/2020</p> <p>2/3/2021</p> <p>11/6/2021</p> <p>Ongoing</p>

Authority/ organisation	Reason(s) for DTC	Date of meeting(s)
Natural England	<ul style="list-style-type: none"> Local Plan Timetable and update Local Plan evidence base update Bassetlaw Garden Village Consultative Group member Recreational Impact Assessment for Clumber Park SSSI, Birklands and Bilhaugh SAC/ Sherwood Forest NNR Removal of the Bassetlaw Garden Village as a site allocation and decision to remove requirement for RAMS (strategic solution) 	15/06/2016 31/3/2020 11/10/2020 11/6/2021 14/07/2021 23/11/2021 30/11/2021 25/1/2022 10/2/2022 23/03/22 Ongoing
D2N2 LEP (Derby, Derbyshire, Nottingham, Nottinghamshire)	<ul style="list-style-type: none"> Economy Housing Need Low carbon future Bassetlaw Garden Village Consultative Group member Apleyhead Strategic Employment site allocation 	11/10/2020 10/06/2020 16/02/2020 22/2/2021 11/6/2021 19/10/2021 Ongoing
South Yorkshire MCA	<ul style="list-style-type: none"> Local Plan Timetable and update Local Plan evidence base update Community Infrastructure Levy Retail and Town Centre Regeneration Infrastructure and Investment Economy Leisure and Tourism 	30/7/2019 14/10/2019 29/11/2019 2/5/2020 30/5/2020 02/06/2020 30/06/2020 28/07/2020

Authority/ organisation	Reason(s) for DTC	Date of meeting(s)
	<ul style="list-style-type: none"> Bassetlaw Local Plan spatial strategy Apleyhead strategic employment allocation 	26/1/2021 8/2/2021 18/08/2021 Ongoing
Sheffield City Council	<ul style="list-style-type: none"> Infrastructure and Investment Economic growth Housing Delivery Apleyhead strategic employment allocation 	25/11/2021 25/1/2022 14/2/2022 Meetings have also been held with South Yorkshire MCA of which Sheffield CC is a member
Western Power Distribution	<ul style="list-style-type: none"> Overview of Bassetlaw Local Plan Strategy (Change of approach from current Plan) Overview of Neighbourhood Planning in Bassetlaw BDC Local Plan - Implications for the rural settlements Bassetlaw Garden Village Consultative Group member BDC Local Plan - Implications for the main towns (Worksop, Retford, Harworth & Bircotes) Capacity of existing network Vehicle electric charging points 	14/04/2017 27/06/2018 Ongoing
Bassetlaw CCG	<ul style="list-style-type: none"> Overview of Bassetlaw Local Plan Strategy (Change of spatial approach from current Plan) Overview of Neighbourhood Planning in Bassetlaw – implications for health services 	17/03/2017 08/10/2018 23/05/2018 07/09/2018

Authority/ organisation	Reason(s) for DTC	Date of meeting(s)
	<ul style="list-style-type: none"> • New settlement: New health service requirement • Opportunity to improve health services in rural area • Implications for the main towns (Worksop, Retford, Harworth & Bircotes) • BDC are Bassetlaw Strategic Estates Group member • Bassetlaw Garden Village Consultative Group member 	16/01/2020 03/09/2020 15/12/2020 11/6/2021 5/08/2021 3/12/2021 Ongoing
National Trust	<ul style="list-style-type: none"> • Recreational Impact Assessment for Clumber Park SSSI, Birklands and Bilhaugh SAC/ Sherwood Forest NNR • Bassetlaw Garden Village Consultative Group member • <u>Apleyhead strategic employment allocation</u> • <u>Phone call to discuss rep and agreement as to whether a SOCG is required – agreed issues can be covered within DtC Statement</u> 	23/11/2021 08/02/2022 <u>27/06/22</u>
Northern Powergrid	<ul style="list-style-type: none"> • Impact of the proposed growth on the electricity network and any future capacity issues. • Bassetlaw New Settlements • Expansion of Worksop • Employment Sites • Electric Car Charging Points on new developments • The potential for renewable energy in new developments. 	11/07/2018 13/09/2018 Ongoing

Authority/ organisation	Reason(s) for DTC	Date of meeting(s)
East Midlands Ambulance Service (EMAS)	<ul style="list-style-type: none"> • Overview of Bassetlaw Local Plan Strategy (Change of approach from current Plan) • Overview of Neighbourhood Planning in Bassetlaw • BDC Local Plan - Implications for the rural settlements • BDC Local Plan - New settlement • BDC Local Plan - Implications for the main towns (Worksop, Retford, Harworth & Bircotes) • Resource implications for EMAS 	04/07/2018 Ongoing
Nottinghamshire Police Service	<ul style="list-style-type: none"> • Overview of Bassetlaw Local Plan Strategy (Change of approach from current Plan) • Overview of Neighbourhood Planning in Bassetlaw • BDC Local Plan - Implications for the rural settlements • BDC Local Plan - New settlement • BDC Local Plan - Implications for the main towns (Worksop, Retford, Harworth & Bircotes) • Capacity of existing services/ability to respond to incidents • Worksop Central 	26/06/2018
Nottinghamshire Fire Service	<ul style="list-style-type: none"> • Overview of Bassetlaw Local Plan Strategy (Change of approach from current Plan) • Overview of Neighbourhood Planning in Bassetlaw • BDC Local Plan - Implications for the rural settlements 	26/06/2018 22/01/2021 Ongoing

Authority/ organisation	Reason(s) for DTC	Date of meeting(s)
	<ul style="list-style-type: none"> BDC Local Plan - New settlement BDC Local Plan - Implications for the main towns (Worksop, Retford, Harworth & Bircotes) Capacity of existing services/ability to respond to incidents. Worksop Central 	
Anglian Water	<ul style="list-style-type: none"> National zonal charging scheme BDC New Settlement Local Plan proposed Strategy Water Cycle Study SUDS Water Quality Sewage Capacity Bassetlaw Garden Village Consultative Group member 	23/05/2018 05/07/2018 07/09/2018 28/08/2019 11/6/2021 Ongoing
Severn Trent Water	<ul style="list-style-type: none"> National zonal charging scheme BDC New Settlement Local Plan proposed Strategy Water Cycle Study SUDS Water Quality Sewage Capacity Bassetlaw Garden Village Consultative Group member 	05/07/2018 03/09/2018 28/08/2019 12/3/2020 11/6/2021 Ongoing
River Idle Management Partnership	<ul style="list-style-type: none"> Worksop Town Centre Regeneration 	06/09/2016 26/01/2017 09/10/2017

Authority/ organisation	Reason(s) for DTC	Date of meeting(s)
	<ul style="list-style-type: none"> Local Plan – potential redevelopment of sites close to waterways Environmental information Flood data and information 	09/04/2018 08/01/2018 Ongoing
Nottinghamshire Ecological and Geological Data Partnership All Nottinghamshire Local Authorities are members of the group	<ul style="list-style-type: none"> Local Plan Timetable and update Local Plan evidence base update 	28/03/2017 11/09/2018 Ongoing
Nottinghamshire Planning Officers Group All Nottinghamshire Local Authorities are members of the group	<ul style="list-style-type: none"> Local Plan Timetable and update Local Plan evidence base update Government guidance Community Infrastructure Levy Conservation 	Meets twice per annum Ongoing
Bassetlaw Rural Conference (Parish and Town Council discussions)	<ul style="list-style-type: none"> Local Plan Timetable and update Local Plan evidence base update 	23/09/2016 17/01/2019 16/1/2020 30/11/2020
Historic England	<ul style="list-style-type: none"> Local Plan Timetable and update Local Plan evidence base update Most recent heritage guidance and legislation Email/phone discussions on Draft Statement of Common Ground Bassetlaw Garden Village Consultative Group member 	11/07/2017 12/10/2018 12/3/2020 21/09/2020 18/2/2021 11/6/2021 23/6/2021 Ongoing

Authority/ organisation	Reason(s) for DTC	Date of meeting(s)
National Highways	<ul style="list-style-type: none"> Local Plan Timetable and update Local Plan evidence base update Bassetlaw Garden Village Consultative Group member 	February 2020 12/3/2020 11/6/2021 16/12/2021 14/2/2022 Several discussions have been undertaken about the Bassetlaw Transport Assessments between 2020 and August 2021 Ongoing
Notts Wildlife Trust	<ul style="list-style-type: none"> Local Plan Timetable and update Local Plan evidence base update Bassetlaw Garden Village Consultative Group member Worksop Central DPD 	16/9/2019 28/01/2020 31/03/2020 April 2021 11/6/2021 5/7/2021 1/2/2022 Ongoing
Sport England	<ul style="list-style-type: none"> Bassetlaw Garden Village Consultative Group member 	February 2020 11/6/2021
National Grid	<ul style="list-style-type: none"> Site allocations 	15/7/2021

Appendix 2: Evidence produced through Joint Working

Strategic Matter/ Cross Border Issue	Joint Work	Organisations	SOCG Status
Strategic Housing Needs	North Derbyshire and Bassetlaw Strategic Housing Market Assessment, 2017	North Derbyshire and Bassetlaw Strategic Housing Market Area	HMA SOCG agreed and signed
	Nottinghamshire Supported Housing Strategy, Nottinghamshire County Council, 2019		Draft HMA SOCG progressing and yet to be signed.
Strategic Economic Growth Needs	D2N2: Recovery and Growth Strategy (2020)	South Yorkshire MCA	SOCG with D2N2 not required
	<p>Sheffield City Region Trade and Investment Plan, Sheffield City Region 2019</p> <p>Sheffield City Region Strategic Employment Land Appraisal, Lichfields, 2020</p> <p>Bassetlaw A1 Corridor Logistics Assessment, August 2021</p>	<p>South Yorkshire MCA, constituent and non-constituent authorities in City Region</p> <ul style="list-style-type: none"> • Amber Valley District Council • Ashfield District Council • Barnsley Metropolitan District Council • Bolsover District Council • Broxtowe District Council • Chesterfield Borough Council • Doncaster Metropolitan Borough Council • Erewash District Council • Gedling Borough Council • Mansfield District Council • Melton Borough Council 	<p>SOCG agreed and signed with South Yorkshire MCA</p> <p>Draft SOCG with South Yorkshire MCA regarding Bassetlaw Local Plan progressing</p> <p>SOCG agreed and signed with Doncaster MBC regarding Doncaster Local Plan</p> <p>Draft SOCG with Doncaster MBC agreed and signed.</p> <p>SOCG with Rotherham drafted but yet to be signed.</p> <p>SoCG regarding Apleyhead agreed with the 20 property market area authorities</p>

Strategic Matter/ Cross Border Issue	Joint Work	Organisations	SOCG Status
		<ul style="list-style-type: none"> Newark & Sherwood District Council North East Derbyshire Council North Kesteven District Council Nottingham City Council Rotherham Metropolitan Borough Council Rushcliffe District Council Sheffield City Council South Kesteven District Council West Lindsey District Council 	
Transport and Infrastructure <ul style="list-style-type: none"> - Strategic road network - Local road network - sustainable transport 	<p>Joint Transport Study: local highway network 2019</p> <p>Nottinghamshire Local Transport Plan 2011-2026</p> <p>Bus Service Improvement Plan, 2021</p> <p>Bassetlaw Transport Assessment Update, August 2021</p> <p>Retford Transport Assessment, August 2021</p> <p>Retford Transport Assessment, June 2021</p> <p>Cottam Power Station - Summary, November 2020</p> <p>Cottam Power Station - Draft Preliminary Report, November 2020</p>	<p>Doncaster MBC and Bassetlaw DC</p> <p>Nottinghamshire County Council, National Highways</p> <p>Nottinghamshire County Council, Commercial operators, neighbouring authorities</p>	<p>SOCG agreed and signed with Doncaster MBC regarding Doncaster Local Plan</p> <p>SOCG with Doncaster MBC regarding Bassetlaw Local Plan</p> <p>SOCG with Nottinghamshire County Council drafted but yet to sign.</p> <p>SOCG with National Highways drafted but yet to sign.</p> <p>SOCG with Network Rail not required</p>

Strategic Matter/ Cross Border Issue	Joint Work	Organisations	SOCG Status
	<p>Bassetlaw Transport Study, January 2020</p> <p>Workshop Central DPD Transport Study (2021)</p> <p>Retford Transport Study December 2021 (ongoing)</p> <p>Retford Walking and Cycling Audit, June 2021</p> <p>BDC Rail Feasibility Technical Note, 2019 (associated with the proposed new station at Bassetlaw Garden Village)</p> <p>BDC Rail Feasibility Technical Note 2 2020</p>	<p>Network Rail, Northern Rail</p> <p>Nottinghamshire County Council</p>	<p>SOCG with Nottinghamshire County Council</p>
Education Requirements	<p>Meetings with NCC Education and NCC (developer contributions) in 2020 on school provision</p> <p>Meeting with NCC planning policy and NCC (developer contributions) in 2021 on education provision</p>	<p>Nottinghamshire County Council</p>	<p>SOCG with Nottinghamshire County Council</p>
Flood Risk	<p>Bassetlaw Strategic Flood Risk Assessment (SFRA) Level 1 and Level 2 (August 2021)</p> <p>Workshop Central DPD Strategic Flood risk Screening Assessment, June 2021</p> <p>Humber River Basin Management Plan, DEFRA 2015</p> <p>Several meetings with EA, LLFA, in 2020/21 about flood management</p>	<p>Environment Agency</p> <p>Nottinghamshire County Council Lead Local Flood Authority (LLFA), internal drainage boards</p>	<p>SOCG with EA</p> <p>SOCGs with NCC,</p> <p>SOCG with Rotherham MBC</p>
Town Centre Regeneration	<p>Draft Workshop Central DPD</p> <p>Workshop Town Centre Masterplan</p>	<p>Environment Agency, Canal & River Trust, Chesterfield Canal Trust, NCC Highways, Stagecoach, Northern Rail, Homes England</p>	<p>SOCGs with EA, and Nottinghamshire County Council</p>
Bassetlaw Garden Village	<p>Bassetlaw Garden Village Vision Statement</p> <p>Also see Heritage, Transport, Natural Environment sections of this table for further evidence</p>	<p>Bassetlaw Garden Village Consultative Group and Project Group (range of organisations)</p>	<p>SOCG not required</p>

Strategic Matter/ Cross Border Issue	Joint Work	Organisations	SOCG Status
Natural Environment - Green and blue infrastructure - Biodiversity	Draft Nottinghamshire Biodiversity Opportunity Mapping- Bassetlaw, Idle Valley Recreational Impact Assessments for Clumber Park SSSI, Bilhaugh and Birklands SAC and Sherwood Forest NNR Clumber Park SSSI, Bilhaugh and Birklands SAC and Sherwood Forest NNR Mitigation Strategies	Notts Wildlife Trust, NCC Bassetlaw DC, Newark & Sherwood DC, Natural England, Notts CC, Bolsover District Council, Mansfield District Council, Rotherham Metropolitan Borough Council, Ashfield District Council and Gedling Borough Council	Nottinghamshire CC SOCG SOCGs progressing with relevant authorities identified
Sport and recreation	Bassetlaw Built Facilities Study 2021 Open Space Assessment Update, November 2020 Bassetlaw Playing Pitch Strategy - Strategy and Action Plan, June 2019 Bassetlaw Playing Pitch Strategy - Assessment Report, January 2019	Sport England	SOCG not required
Gypsy and Travellers needs	Meeting held to discuss Bassetlaw GTAA with neighbouring authorities in October 2019 Discussions ongoing with NCC in relation to an emergency stopping site	Bassetlaw DC, neighbouring authorities & Notts CC	Neighbouring Local Authority and HMA SOCGs Draft SOCG with Nottinghamshire CC
Historic Environment	Bassetlaw Heritage Assessment 2021 Bassetlaw Garden Village Desk Top Archaeological Assessment 2021 Draft Bassetlaw Garden Village Geophysical Assessment 2021	Bassetlaw DC, Historic England, Lincolnshire County Council Archaeology	SOCG not required
Site Allocations	Various discussions with neighbouring authorities/ organisations, developer partners	All neighbouring authorities, Environment Agency, Nottinghamshire County Council, Natural England, Historic England, Network Rail, Highways England, Sport England	SOCGs with partners identified Developer partner SOCGs

Appendix 3: Duty to Cooperate Matrix

	Strategic Matter																							
	Nottinghamshire County Council	West Lindsey Council and other members of the Joint Central Lincolnshire Planning Authority - Combined Authority for Lincoln	North Lincolnshire District Council	Newark and Sherwood District Council	Mansfield District Council	Bolsover District Council	Rotherham Metropolitan Borough Council	Doncaster Metropolitan Borough Council	Environment Agency	National Highways	Natural England	Historic England	Network Rail	Bassetlaw Clinical Commissioning Group (CCG)	Utilities – Water Companies (Severn Trent and Anglian Water) and Western Power Distribution	D2N2 – Derby, Derbyshire, Nottingham and Nottinghamshire Local Enterprise Partnership	South Yorkshire Mayoral Combined Authority (Sheffield City Region MCA) and the LEP - Combined Authority for South Yorkshire	Lowland Derbyshire and Nottinghamshire Local Nature Partnership	Environment Partnerships (incl. Canal & River trust, Nottinghamshire Wildlife Trust, National Trust)	Sheffield City Council	North Derbyshire and Bassetlaw Housing Market Area Local Authorities: North East Derbyshire, Chesterfield Borough Council, (the HMA also	Melton Borough Council	Ashfield District Council	Nottingham Core HMA Local Authorities (Nottingham City Council, Gedling BC, Broxtowe BC, Rushcliffe BC, Erewash BC
Identifying Bassetlaw’s housing requirement						✓															✓			
Fully meeting the housing requirement within Bassetlaw District by 2038		✓	✓	✓	✓	✓	✓	✓													✓			
Identifying Bassetlaw’s economic development needs and fully meeting this within Bassetlaw District by 2038		✓	✓	✓	✓	✓	✓	✓													✓			
Delivering Apleyhead Strategic Employment site allocation	✓	✓	✓	✓	✓	✓	✓	✓		✓	✓	✓			✓	✓	✓		✓	✓	✓	✓	✓	✓
Infrastructure delivery – including health,	✓	✓	✓	✓	✓	✓	✓	✓	✓	✓	✓		✓	✓	✓	✓		✓						

