

Bassetlaw Local Plan

Policies Maps



Bassetlaw
DISTRICT COUNCIL
— North Nottinghamshire —



The Bassetlaw Policies Maps

What are the Policies Maps? This Policies Map contributes to the portfolio of documents forming the Bassetlaw Local Plan 2020. It sets out geographical information relating to:

- Areas of protection for nationally and locally designated heritage and biodiversity areas and sites; and
- Specific areas and land uses to which policies apply as set out in the Bassetlaw Local Plan 2020.

How do I use the Policies Maps?

The Policies Map can be used to identify the specific areas covered by different policies as they apply across the District. It should be read in conjunction with the Bassetlaw Local Plan. Accompanying Inset Maps provide more detailed information relating to specific settlements or areas within Bassetlaw. The areas to which the Inset Maps relate are shown on the main Policies Map and a list of all inset maps is set out below.

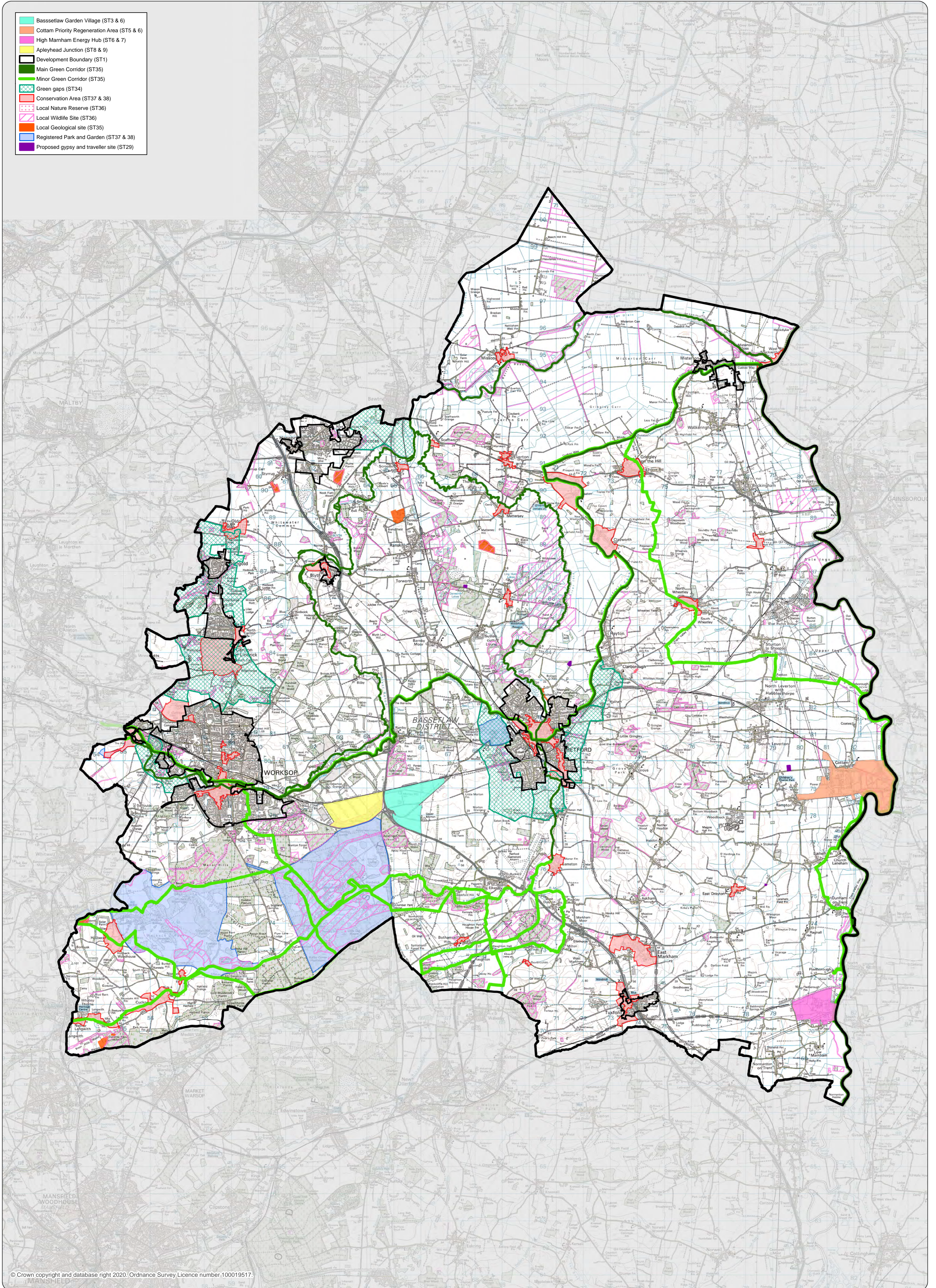
Will the Policies Map be updated to reflect changes in local circumstance?

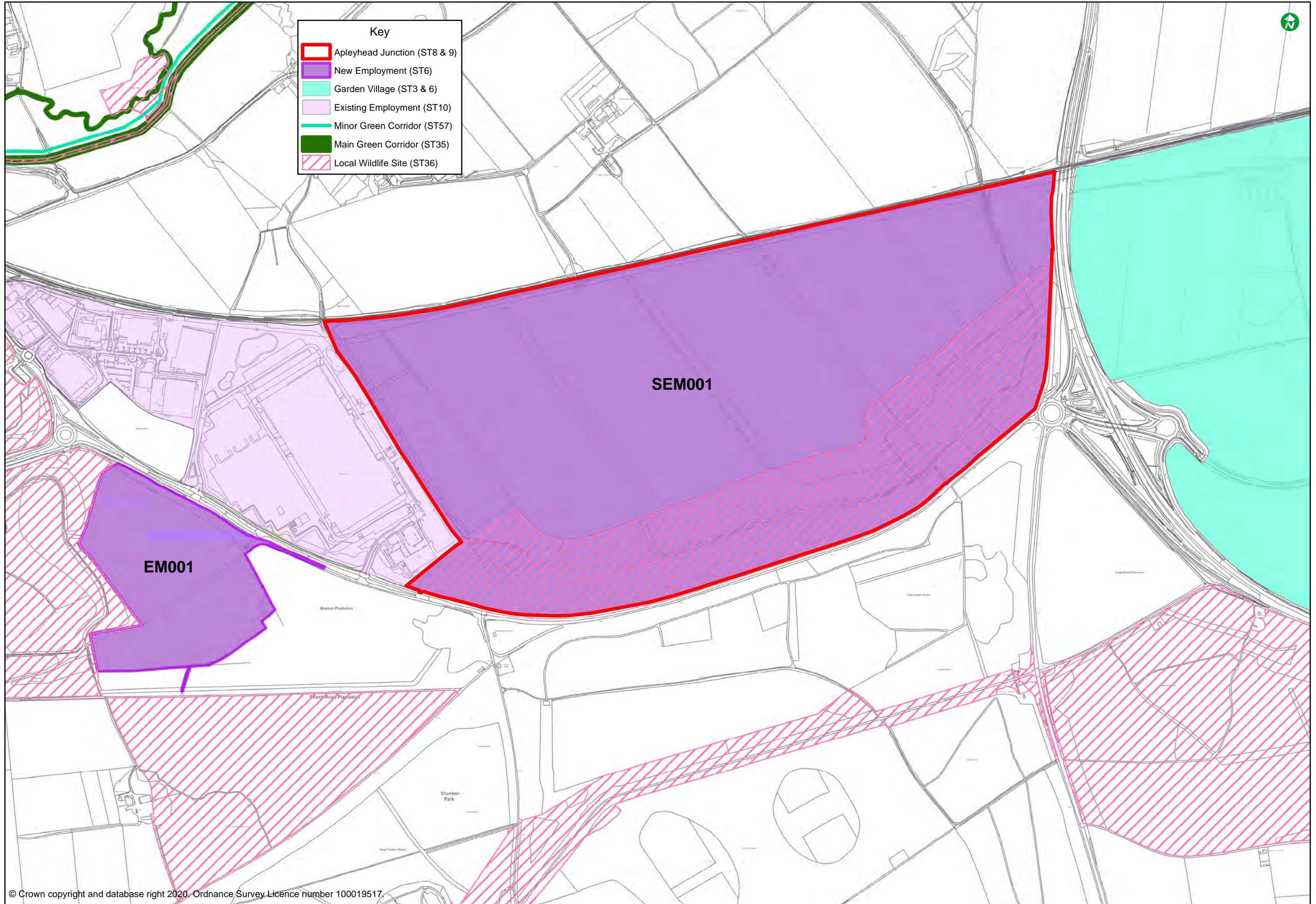
The geographical information provided in the Policies Maps is accurate at the time of publishing. Site designations do change over time, however, and boundaries (e.g. to Conservation Areas) may also be revised. It will, therefore, always be worth checking with the Council before submitting a planning application if you think that there may have been changes to designations or to policy area boundaries that would affect the site of the proposed development.

List of Policies Maps

- 1.** Bassetlaw District Policies Map
- 2.** Applyhead Junction Strategic Employment Site
- 3.** Bassetlaw Garden Village
- 4.** Carlton in Lindrick
- 5.** Cottam Priority Regeneration Area
- 6.** Harworth and Bircotes
- 7.** High Marnham Energy Hub
- 8.** Langold
- 9.** Misterton
- 10.** Retford
- 11.** Retford Town Centre
- 12.** Tuxford
- 13.** Worksop
- 14.** Worksop Town Centre

- Bassetlaw Garden Village (ST3 & 6)
- Cottam Priority Regeneration Area (ST5 & 6)
- High Marnham Energy Hub (ST6 & 7)
- Apleyhead Junction (ST8 & 9)
- Development Boundary (ST1)
- Main Green Corridor (ST35)
- Minor Green Corridor (ST35)
- Green gaps (ST34)
- Conservation Area (ST37 & 38)
- Local Nature Reserve (ST36)
- Local Wildlife Site (ST36)
- Local Geological site (ST35)
- Registered Park and Garden (ST37 & 38)
- Proposed gypsy and traveller site (ST29)



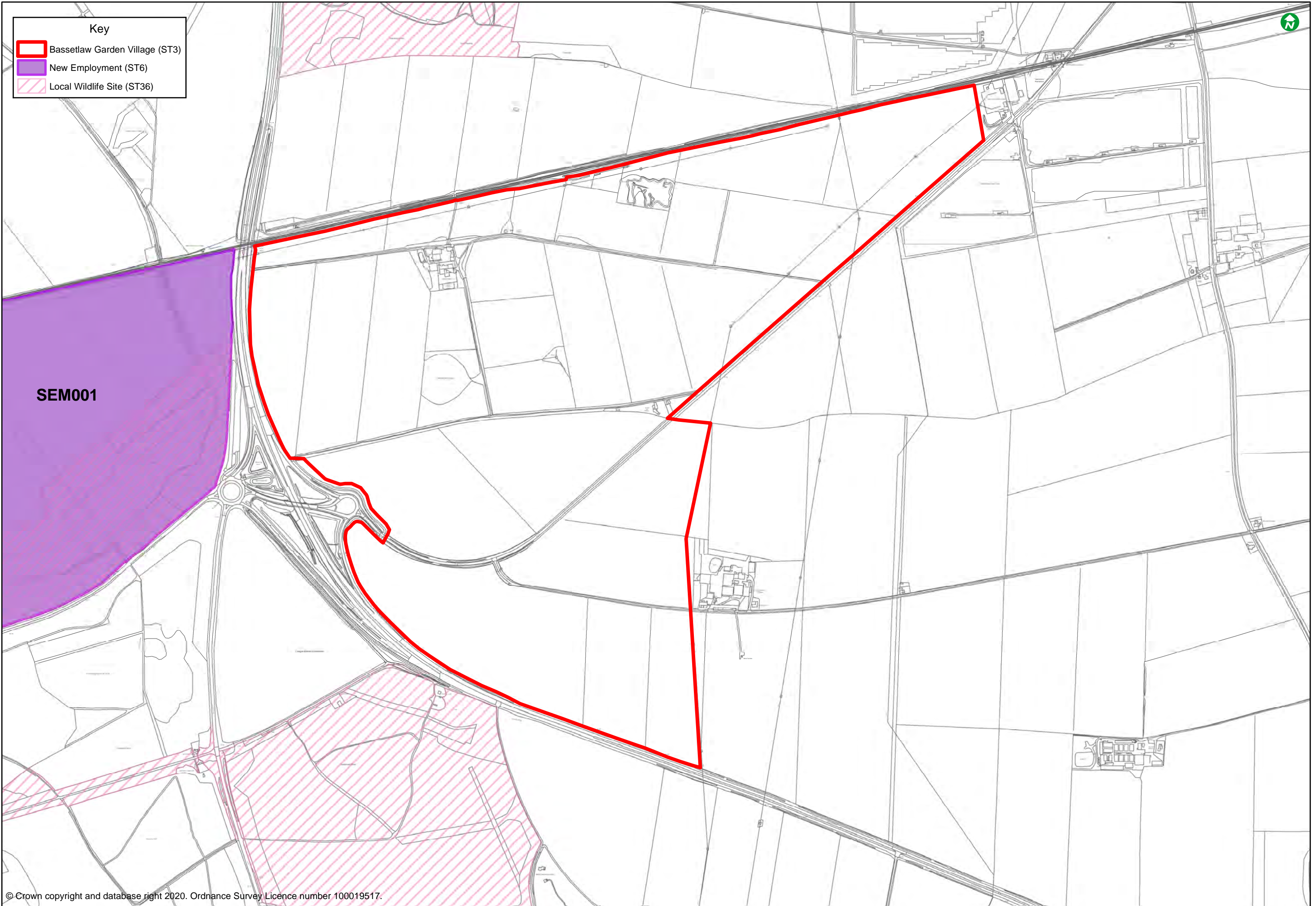


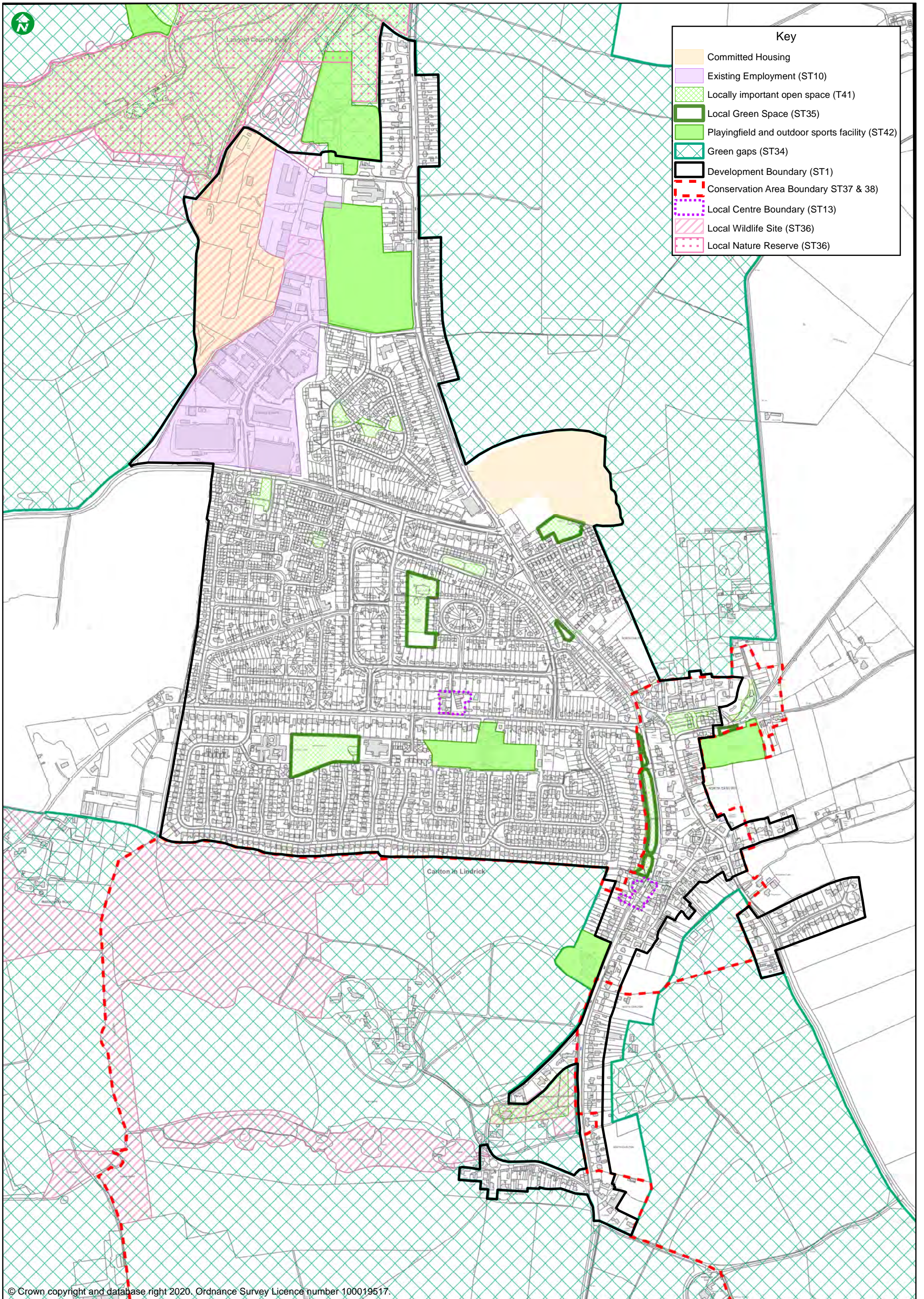
Key

- Apleyhead Junction (ST8 & 9)
- New Employment (ST6)
- Garden Village (ST3 & 6)
- Existing Employment (ST10)
- Minor Green Corridor (ST57)
- Main Green Corridor (ST35)
- Local Wildlife Site (ST36)

SEM001

EM001

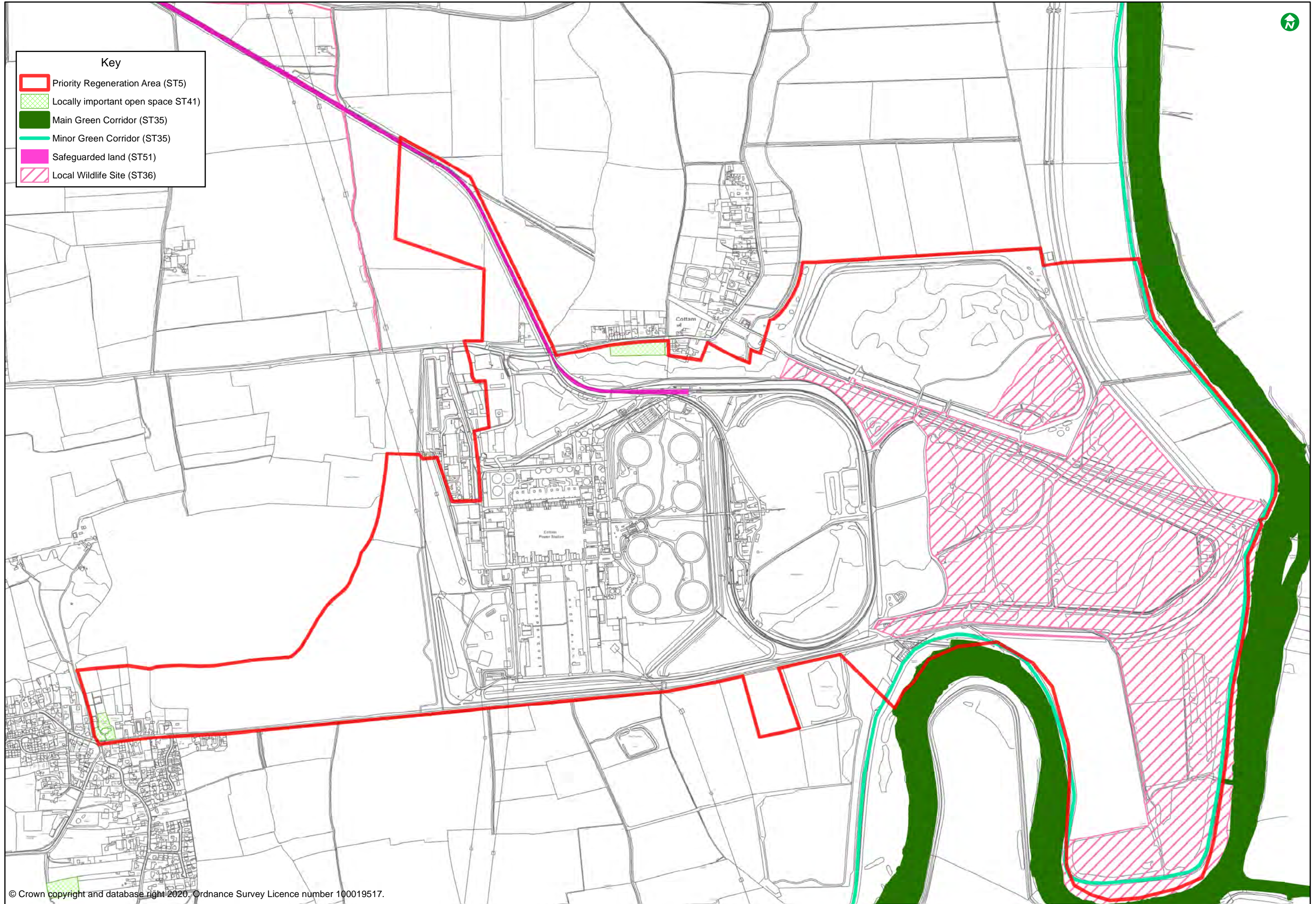


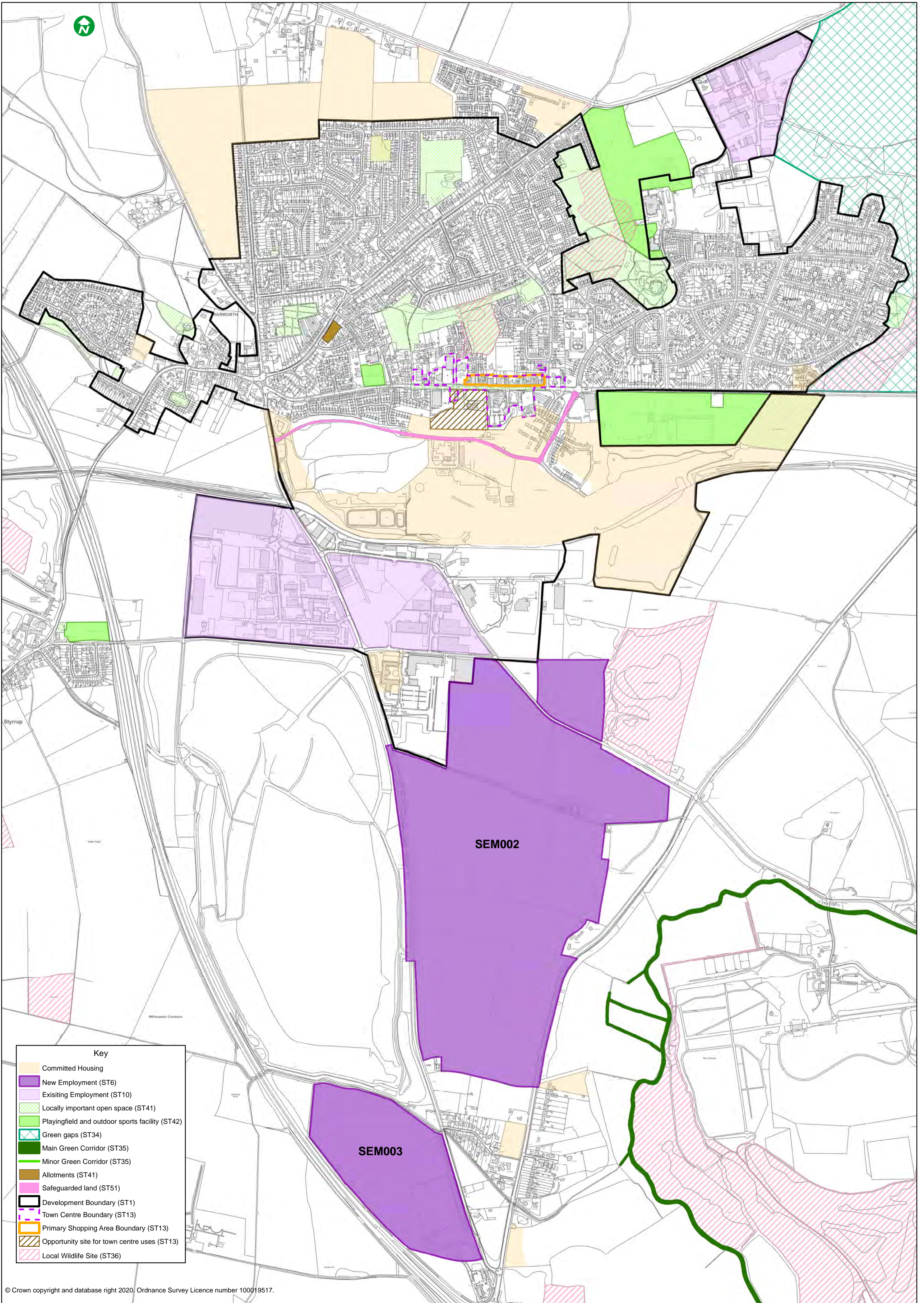




Key

- Priority Regeneration Area (ST5)
- Locally important open space (ST41)
- Main Green Corridor (ST35)
- Minor Green Corridor (ST35)
- Safeguarded land (ST51)
- Local Wildlife Site (ST36)



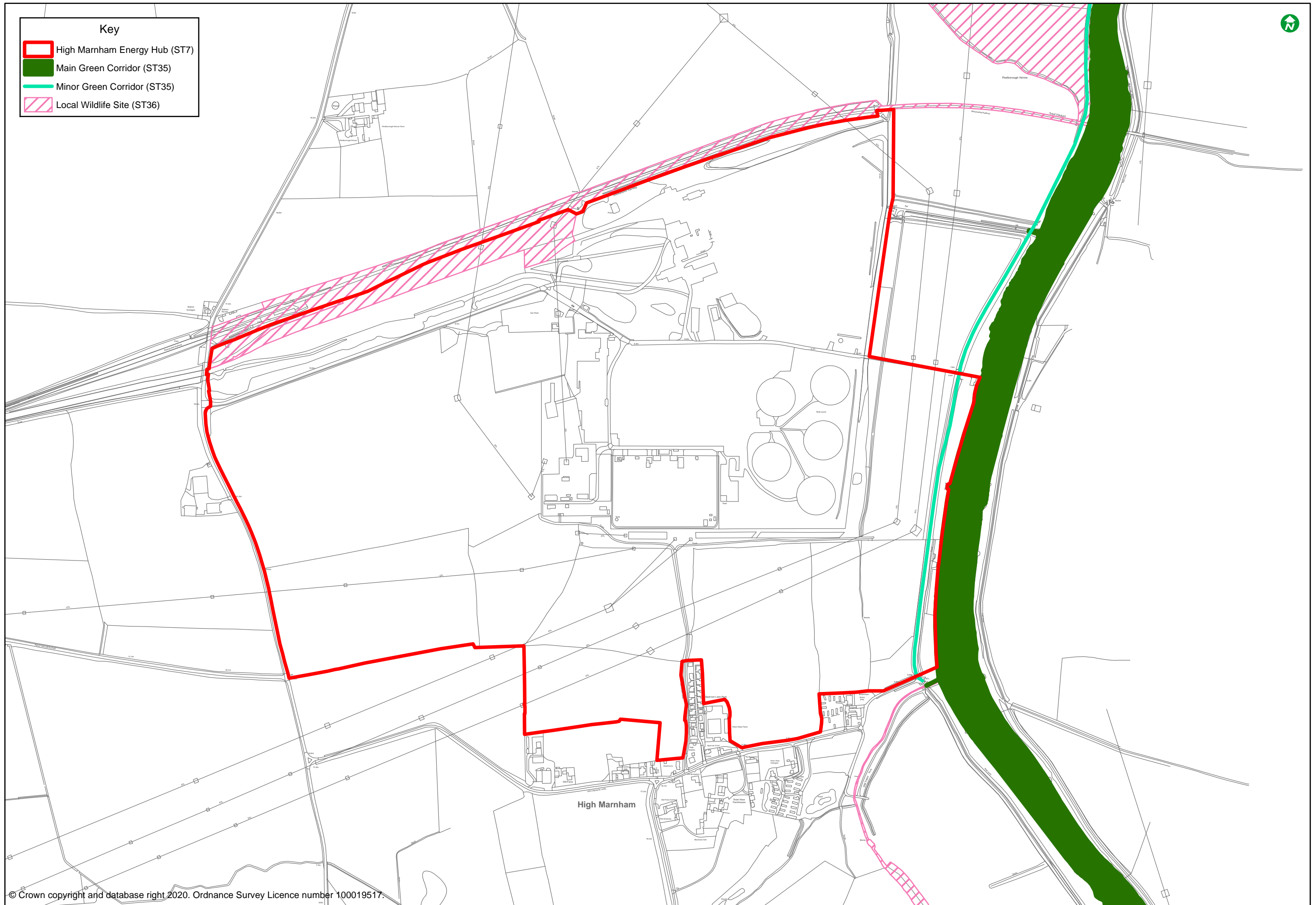


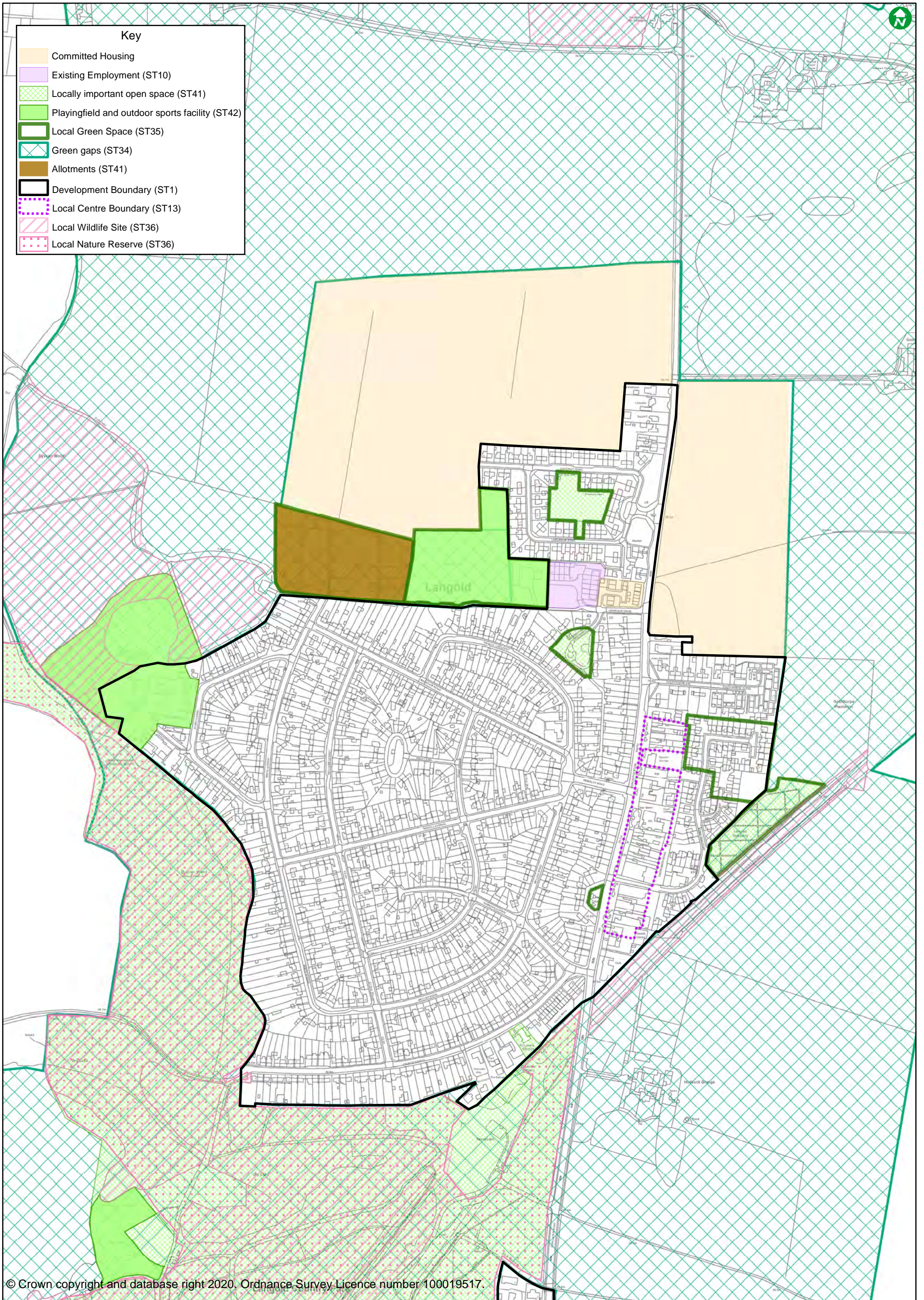
Key	
	Committed Housing
	New Employment (ST6)
	Existing Employment (ST10)
	Locally important open space (ST41)
	Playingfield and outdoor sports facility (ST42)
	Green gaps (ST34)
	Main Green Corridor (ST35)
	Minor Green Corridor (ST35)
	Allotments (ST41)
	Safeguarded land (ST51)
	Development Boundary (ST1)
	Town Centre Boundary (ST13)
	Primary Shopping Area Boundary (ST13)
	Opportunity site for town centre uses (ST13)
	Local Wildlife Site (ST36)

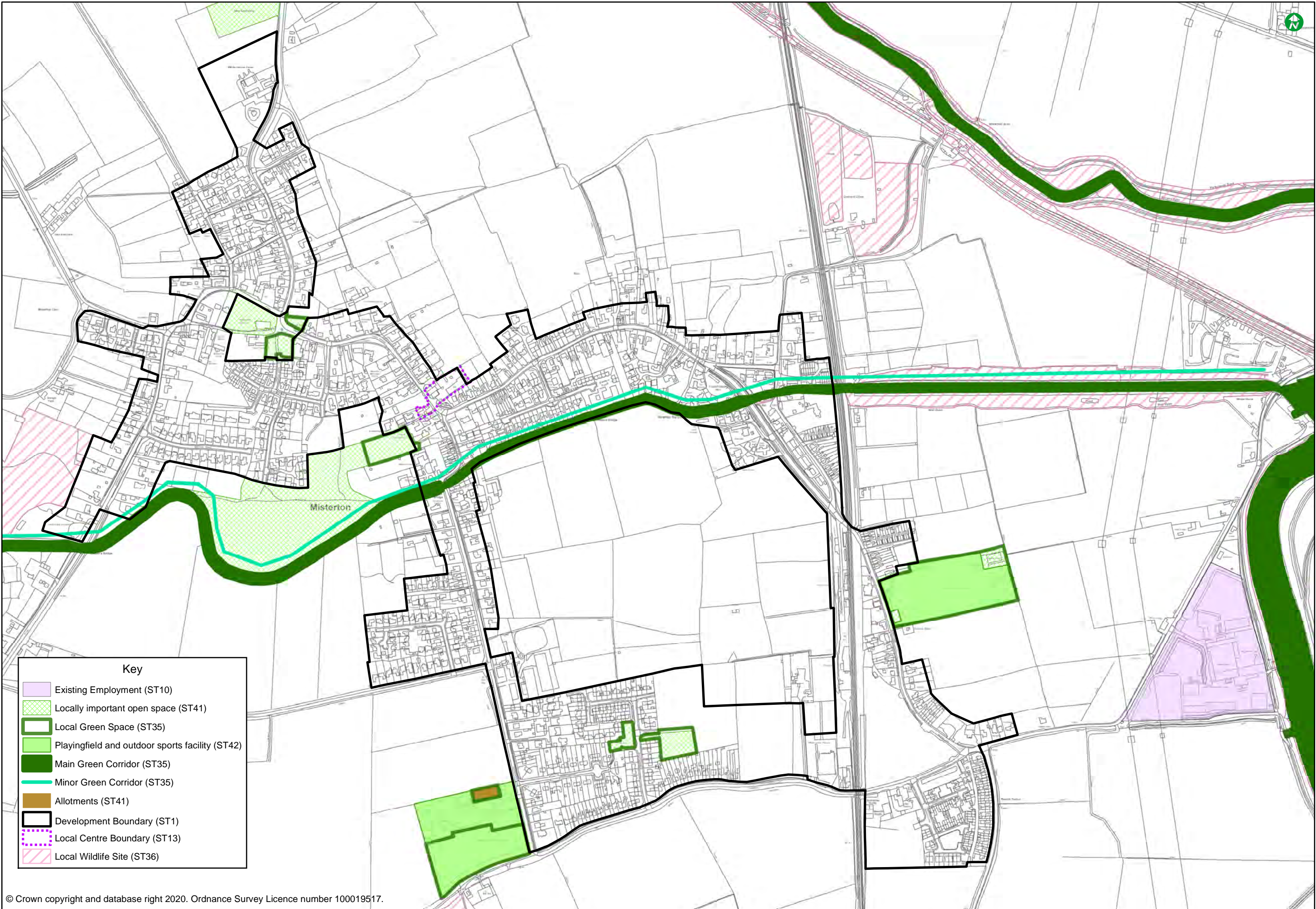


Key

- High Marnham Energy Hub (ST7)
- Main Green Corridor (ST35)
- Minor Green Corridor (ST35)
- Local Wildlife Site (ST36)







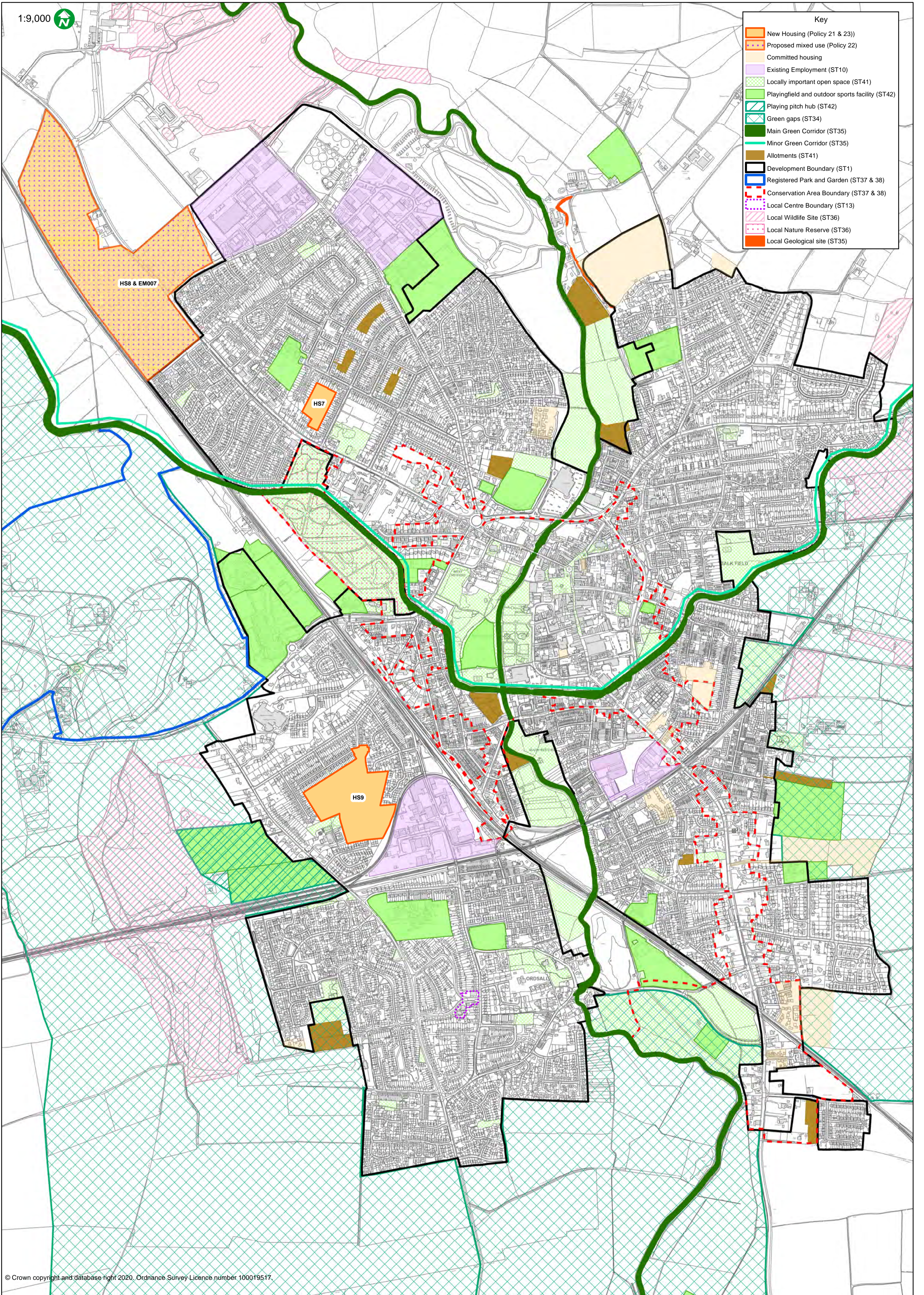
Key

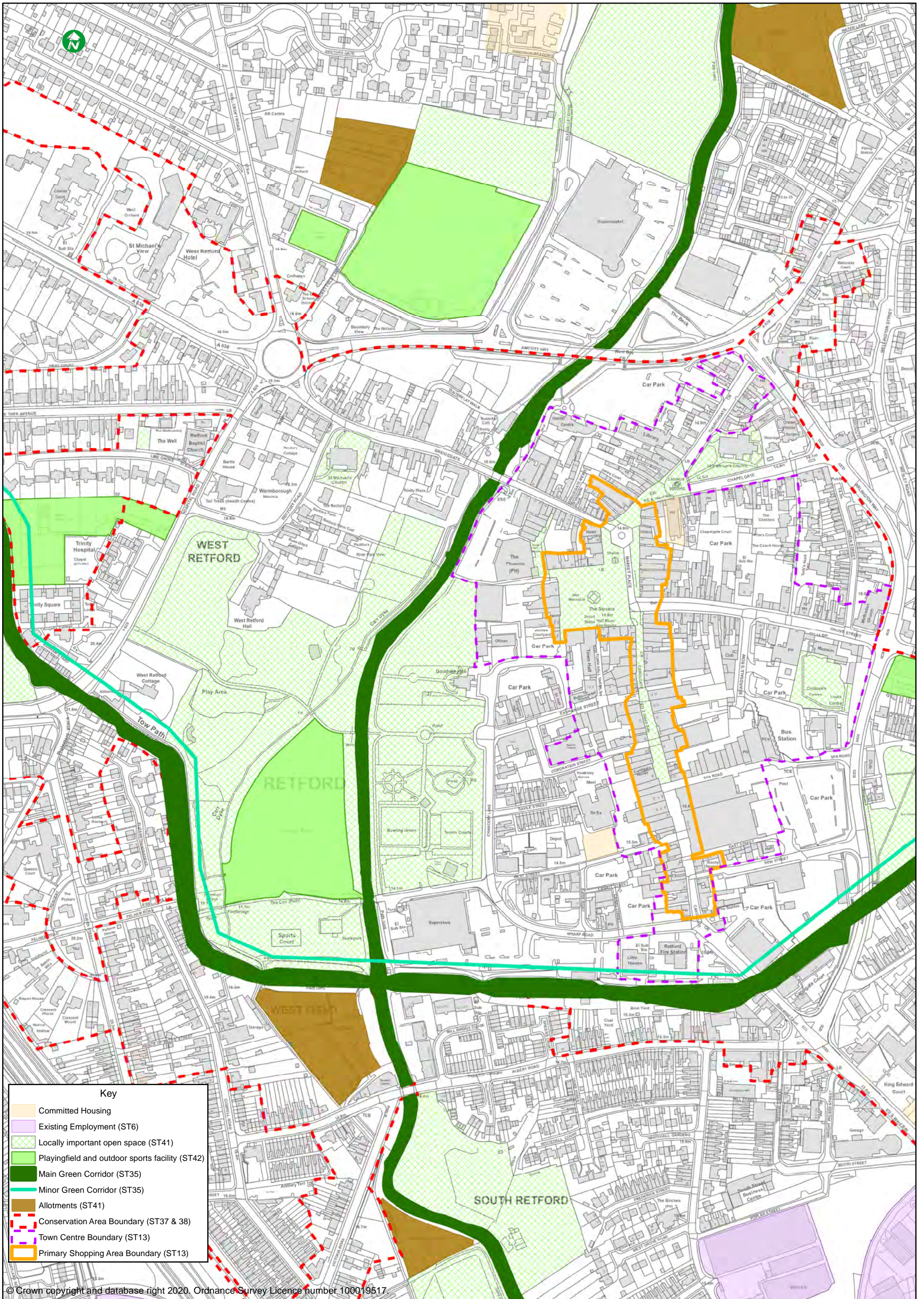
- Existing Employment (ST10)
- Locally important open space (ST41)
- Local Green Space (ST35)
- Playingfield and outdoor sports facility (ST42)
- Main Green Corridor (ST35)
- Minor Green Corridor (ST35)
- Allotments (ST41)
- Development Boundary (ST1)
- Local Centre Boundary (ST13)
- Local Wildlife Site (ST36)

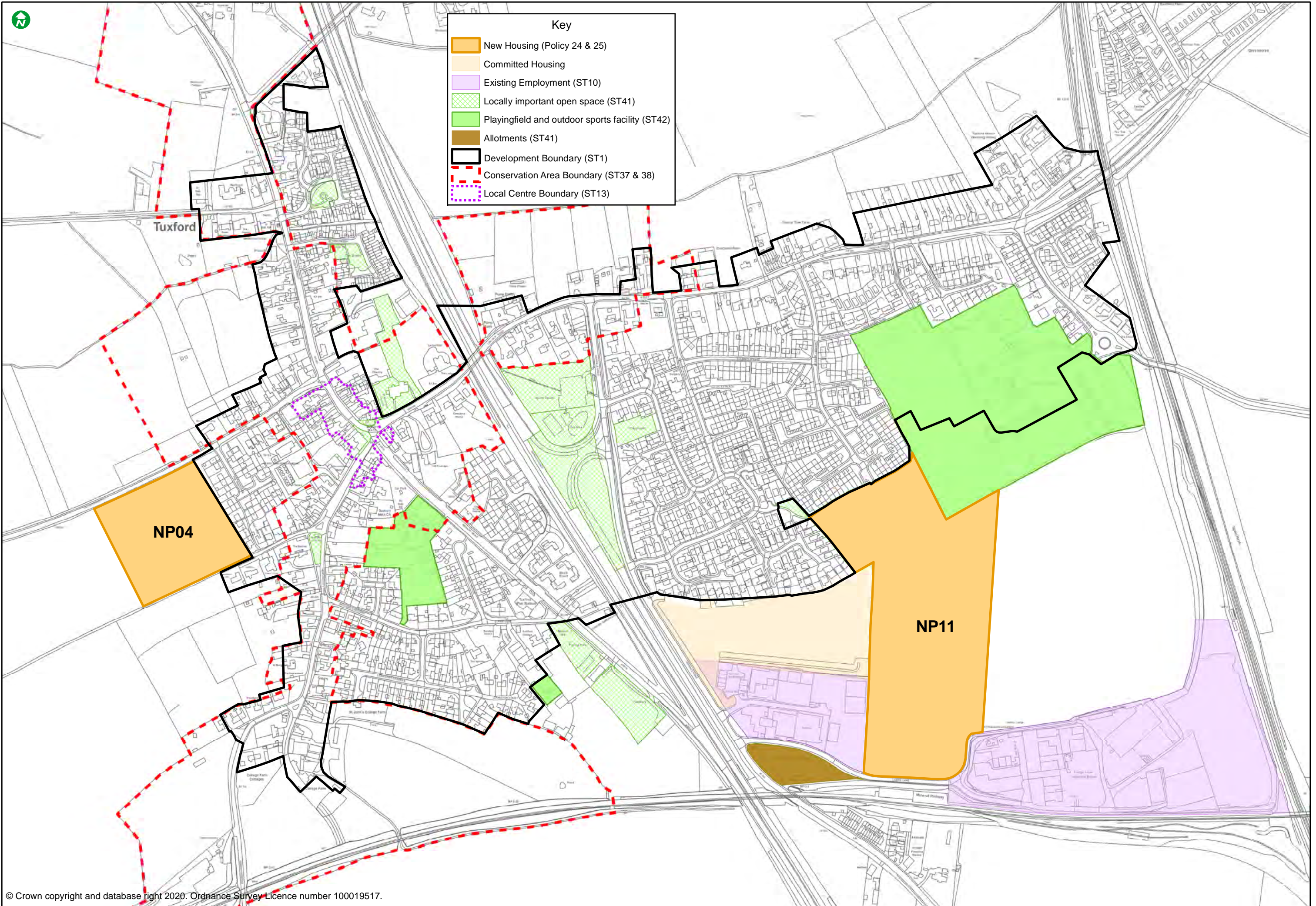
1:9,000

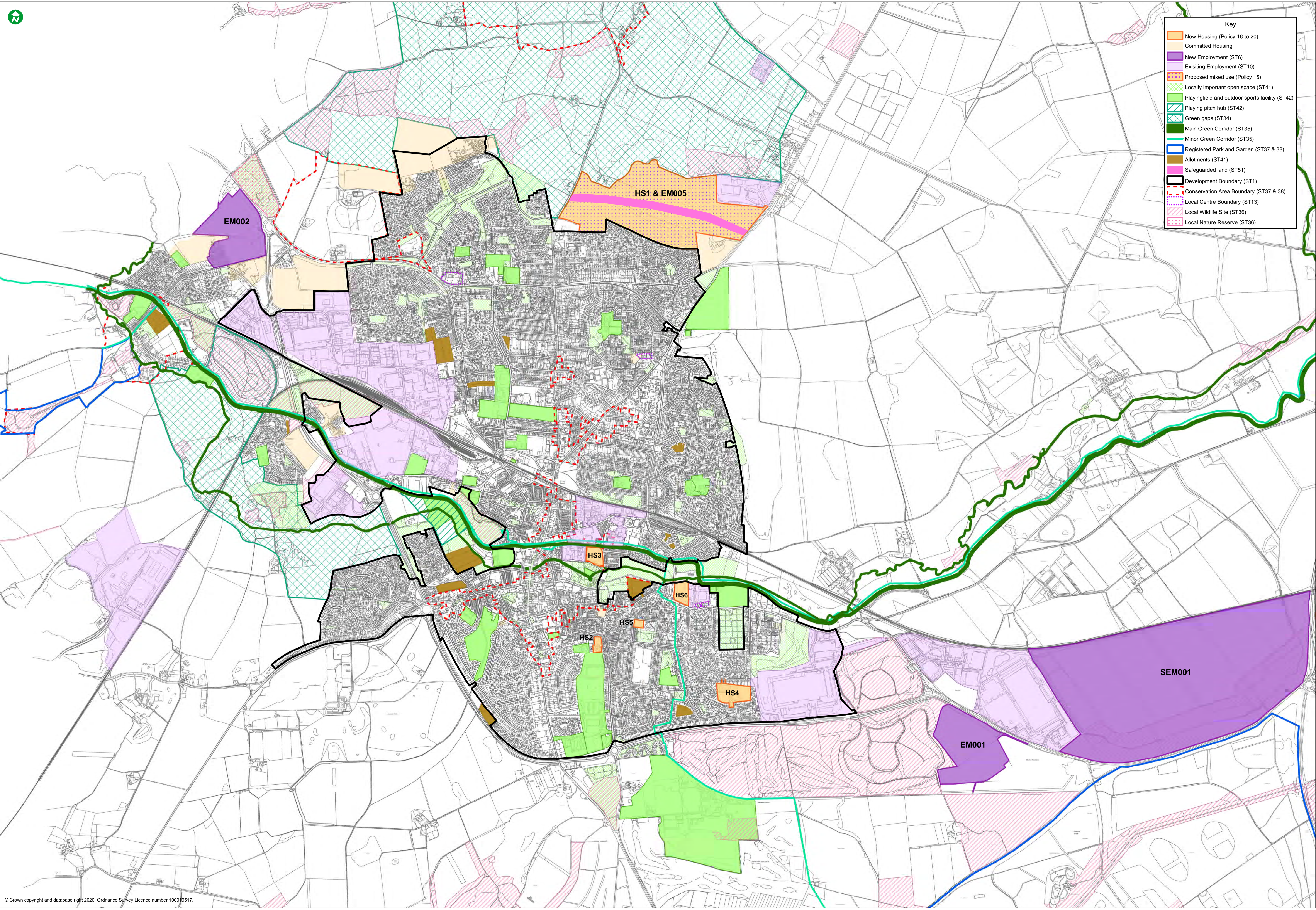


Key	
	New Housing (Policy 21 & 23)
	Proposed mixed use (Policy 22)
	Committed housing
	Existing Employment (ST10)
	Locally important open space (ST41)
	Playingfield and outdoor sports facility (ST42)
	Playing pitch hub (ST42)
	Green gaps (ST34)
	Main Green Corridor (ST35)
	Minor Green Corridor (ST35)
	Allotments (ST41)
	Development Boundary (ST1)
	Registered Park and Garden (ST37 & 38)
	Conservation Area Boundary (ST37 & 38)
	Local Centre Boundary (ST13)
	Local Wildlife Site (ST36)
	Local Nature Reserve (ST36)
	Local Geological site (ST35)









Key	
[Orange box]	New Housing (Policy 16 to 20)
[Light orange box]	Committed Housing
[Purple box]	New Employment (ST6)
[Light purple box]	Existing Employment (ST10)
[Orange box with pink diagonal lines]	Proposed mixed use (Policy 15)
[Light green box]	Locally important open space (ST41)
[Light green box with diagonal lines]	Playingfield and outdoor sports facility (ST42)
[Light green box with cross-hatch]	Playing pitch hub (ST42)
[Light green box with vertical lines]	Green gaps (ST34)
[Dark green box]	Main Green Corridor (ST35)
[Light green box with horizontal lines]	Minor Green Corridor (ST35)
[Blue box]	Registered Park and Garden (ST37 & 38)
[Brown box]	Allotments (ST41)
[Pink box]	Safeguarded land (ST51)
[Black outline]	Development Boundary (ST1)
[Red dashed outline]	Conservation Area Boundary (ST37 & 38)
[Red dotted outline]	Local Centre Boundary (ST13)
[Pink box with diagonal lines]	Local Wildlife Site (ST36)
[Pink box with cross-hatch]	Local Nature Reserve (ST36)

