



**Bassetlaw**  
DISTRICT COUNCIL  
— North Nottinghamshire —

# The Draft Bassetlaw Plan: Policy Quick Guide



**Bassetlaw Vision and Objectives:**  
The foundations of the Bassetlaw Plan

**Policy 1:**  
Bassetlaw Spatial Strategy

**Policy 2:**  
Housing and Economic Growth



**Policy 3:**  
Affordable Housing in Bassetlaw

**Policy 4:**  
A sustainable mix of Housing

**Policy 5:**  
Self and Custom Build Housing

**Policy 6:**  
Specialist Housing to meet the needs of older people

**Policy 7:**  
Residential Care Homes



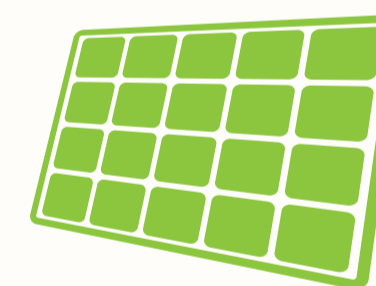
**Policy 8:**  
Spatial Strategy for Rural Bassetlaw

**Policy 9:**  
Spatial Strategy for Worksop

**Policy 10:**  
Spatial Strategy for Retford

**Policy 11:**  
Spatial Strategy for Harworth & Bircotes

**Policy 12:**  
Spatial Strategy for North Notts Garden Villages



**Policy 13:**  
Promoting Energy Efficiency and Waste Management

**Policy 14:**  
Renewable and Low Carbon Energy



**Policy 15:**  
Flood Risk Mitigation

**Policy 16:**  
Water Efficiency and Water Quality

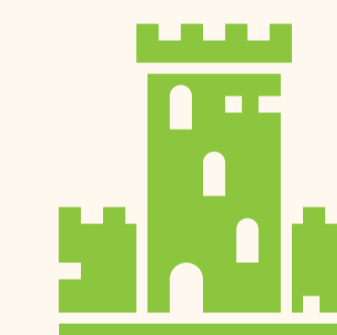


**Policy 17:**  
Protecting and enhancing landscapes

**Policy 18:**  
Green Infrastructure

**Policy 19:**  
Protecting Biodiversity and Geodiversity

**Policy 20:**  
Protecting and Creating Open Spaces



**Policy 21:**  
Conservation and enhancement of Bassetlaw's history and heritage assets

**Policy 22:**  
Design to enhance the built, natural, and historic environment



**Policy 23:**  
Community Services and Facilities

**Policy 24:**  
Protection and Delivery of Infrastructure