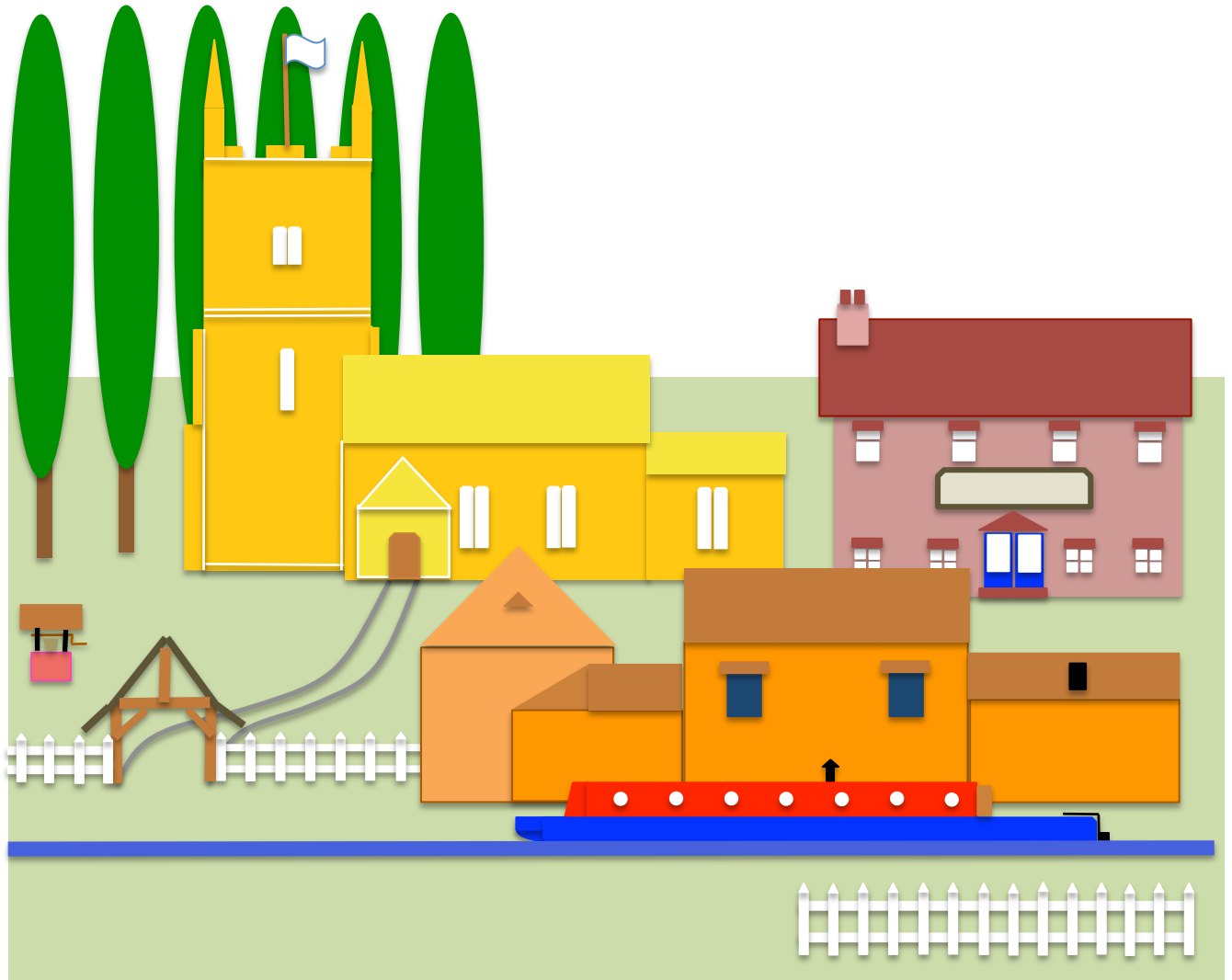


Clarborough & Welham

Neighbourhood Plan



**Clarborough & Welham Neighbourhood Development Plan
2016 – 2031**

Consultation Statement

Your village. your plan. your future

Contents

1	Introduction	3
	Why has this Consultation Statement been produced?	3
	The Consultation Statement	3
	Neighbourhood Plan Designation	4
2	Establishing the Neighbourhood Plan in the Parish	5
	A Steering Group	5
	Professional Support	5
	Developing a 'Brand'	6
3	The Consultation Process	6
	Engagement Strategy	6
	Reaching All the Community	11
	Types of Events used in Consultation	12
	Publications and Social Media	14
	Methods of Response to Consultation Events	16
	Feedback from Consultation	17
4	Resident Consultation Process Pre Submission Draft Plan	18
	Documentation	18
	The 6 Week Period	18
	Publicity	19
	Public Meetings	20
5	Results of Resident Consultation – Pre Submission Draft Plan	21
	Attendance at Consultation Events	21
	Comments made at the Consultation Events	21
	Results from the 'Consultation Questions' booklet	22
	Responses to Questions in the 'Consultation Questions' booklet	22
6	Residents Written Comments and Steering Group Response	24
	Highlights of the Written Comments	
24		
	Steering Group Response to Written Comments	25
7	Statutory Bodies Consultation	27
8	Appendices	36
	Appendix A: Notification of Request for Neighbourhood Plan Designation	36
	Appendix B: Examples of early Publicity Material	37
	Appendix C: Records of Awareness Raising Events	38
	Appendix D: Broad Gores site – Consultation Publicity	40
	Appendix E: Draft Plan – Consultation Publicity	42
	Appendix F: Statutory Consultees	44

7 Appendices

Appendix A: Notification of request for NP Designation

Letter to the Editor – a Village Plan?

About a year ago we were all made aware of the Local Development Framework (LDF) as published by Bassetlaw District Council. This is a legal document which Bassetlaw, as the local planning authority, has to produce on a 10 year cycle as part of its Core Strategy. This document is still in the process of finalisation by BDC and a final version will be put out for consultation in November before being ratified by BDC early in 2013.

You may remember that proposals for Claborough and Welham involved quite large numbers of new houses. Many residents thought that this was inappropriate and responded in this way to the original consultation. If you responded to that original document then you should be given the chance by BDC to respond to the final draft.

We, as a community, can have a greater influence in planning decisions if we have recorded our wishes in a Village Plan or Village Design Statement. These documents need to be drawn up by residents rather than the Parish Council but supported by the Parish Council. It sets out an outline for the village from a planning point of view. There are only four villages in Bassetlaw where communities have such a Plan or Design Statement but other local villages, including Hayton, are now beginning work on their own. This is not a 'quick fix' but a process with certain 'hoops' through which the group must jump.

The idea of a Village Plan was broadly supported by Claborough and Welham Parish Council at their meeting in October.

I would suggest that Claborough and Welham residents need one or other of these documents. It is, after all, our village and we should be the ones making the decisions not people who work in Worksop who, with the best will in the world, cannot know or understand what it is like to live in our village. I am, therefore, proposing a meeting of those interested in helping to produce a Village Plan. The purpose of the meeting would be to examine the method of producing such a plan. The meeting would have an input from Bassetlaw District Council Planning Department and also, hopefully, from a representative of one of the villages where a village plan already exists.

If there is sufficient interest in the idea (it is a task for a group, not a single individual) I would be prepared to organise the above meeting and set a date, probably early in the New Year. An expression of interest in this meeting, or attendance at the meeting, would not, of course, imply a commitment to any further participation in the project – if indeed there is a decision to proceed.

Please remember, it is our community, our environment, our homes and our village. We should, therefore, put ourselves in a position to decide what happens here as far as possible.

If you are interested in attending an evening meeting then please contact me on paul@paulwillcock.com indicating which evenings of the week you can be available so that I can set an evening which is most convenient to most people.

Paul Willcock
Claborough

www.buywithconfidence.gov.uk
for companies that have been vetted by local Trading Standards for good service – and no 'rip offs'.

LWP
Liverpool Wood Pellets

The leading solid fuel supplier in the UK

LWP offer a wide range of solid fuel, including wood pellets, kiln dried logs (split and unsplit) and low burning wood briquettes with the highest calorific value.

- Blown wood pellet deliveries 3 - 20 tonnes.
- Bagged pellet deliveries 10kg or 15kg bags.

Deliveries can be made within 24hrs from ordering.

Get in touch to find out what other fantastic fuels we have on offer - we will not be beaten on price!

0151 236 9181
sales@liverpoolwoodpellets.co.uk

15 Claborough & Welham Newsletter - Winter 2012

Village Newsletter – Winter 2012 Outlining the idea of a Village Plan

**Retford Times – July 2013
Designation Notice**

Letters to the Editor

Traveling thro' Welham in December you must have noticed that we did, after all the previous problems, have a rather splendid display of Christmas Tree Lights. This was only made possible by two very willing volunteer residents, Mr Mick Kay and Mr Richard Kay. Mick approached Richard about the electricity supply problem which then immediately gave permission for the free use of his junction box in the field and also the power used. With this problem solved Mick diligently seized the internet and on our behalf bought strings of 400 'Pea' Lights (at very low cost and well within the budget). On receiving these and at the appropriate time he enlisted the help of a friend, who 'happened' to have a tractor, they decorated the tree, connected up to Richard's supply and we were 'in business'.

On behalf of the Parish Council and Welham residents therefore we are indebted to these gentlemen for their help, cooperation and generosity in 'Lighting Up' our village at Christmas.

Councillor Brian Robinson

Developing a Village Plan

In the last Newsletter I suggested a village meeting to discuss the issue of a Village Plan for planning purposes. With the onset of Christmas etc and the difficulty of informing all villagers of the date and venue of such a meeting I put the issue on hold until this Newsletter.

The meeting will start at 19:00 on 7th March in The Kings Arms. There will be a representative of Bassetlaw District Council Planning Department to outline the possibilities.

I look forward to seeing as many as are interested in the proposal. It would be useful if anyone interested in the meeting would let me know by e-mail.

Paul Willcock
paul@paulwillcock.com

**Bassetlaw Food Bank
What's needed?**

Any donations of:

- Cereal, Milk, Fruit juice or squash,
- Tea, Coffee, Sugar, Jam, Spreads,
- Meat, Fish, Pasta/Rice/Noodles,
- Pulses/Couscous, Soup, Vegetables, Pasta, Cooling sauces, Fruit/Puddings, Snacks/Biscuits,
- Nappies (sealed packets), Baby wipes & Toiletries, Baby food.

Please note we can only accept tinned, dried or UHT products.

Free Library Computer use

Do remember that provided you hold a current Nottinghamshire Library Card, you can book one of our computers free of charge. Just contact your local library.

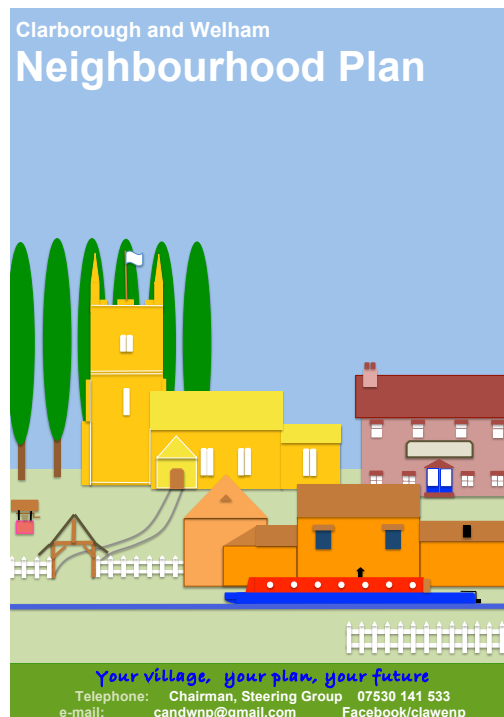
Appendix B: Examples of early Publicity Material



Roller Banner
Used at events and during interim periods to maintain a 'presence' in pubs etc



Roadside Banner
Using 'house style', 2 of these were used in several locations in the Parish.



November 2013:
'Brand' which was eventually used on all publicity material from that date.

Appendix C: Records of Awareness Raising Events

Clarborough & Welham

Neighbourhood Plan

Events History

Awareness Raising Events Record – Groups Summary

November 2013 – March 2014

No.	Date	Time	Length	Event	Venue	Gender		Age				Village			Total attend	Comments
						Male	Female	10-20	21-40	41-60	61 +	Clar	Wel	Other		
1	26/11	11.00	30m	Sure Start Group	Primary School	2	5	-	5	2	1	5	1	1	7	General interest
2	27/11	19.00	15m	Village Ventures	Kings Arms Public House	4	5	-	-	4	5	5	4	-	9	No report
3	02/12	19.00	20m	Parish Council Meeting	Village Hall	8	6	-	-	4	10	12	2	-	-	General discussion of progress 14 leaflets given out
4	03/12	14.45 15.15	15m (x 2)	IT Groups (x 2)	Village Hall	8	10	-	-	-	18	4	1	13	18	General introduction to people who 'play' in the villages. 1 person walked out saying he had heard it all before! 18 fliers given out
5	09/12	17.00	-	Senior Citizens Christmas Meal	Village Hall	NK	NK	-	-	-	-	96	NK	NK	NK	96 leaflets given out
6	14/12	14.00	15m	Gardening Club	Village Hall	3	12	-	-	2	13	15	-	-	-	15 leaflets given out
7	16/12	14.45	20m	Indoor Bowls Club	Village Hall	4	8	-	-	-	12	7	1	4	12	By-pass because of traffic on Smeath Lane. Improve public transport, more businesses, Shop, Change 'GillGreen Walk' signage to remove elderly info 12 leaflets given out
8	30/01/14	17.30	15m	Scout Meeting	Village Hall	15	9	19	2	3	-	20	2	2	24	Shop
9	07/03/14	15.45	20m	Parochial Church Council	Private Home	4	5	-	-	2	7	7	-	2	9	Affordable housing, Shop, Full Post Office, Too much traffic, More public transport, More hedges, Pathway at church, Speeding, Litter cleaning, More use of church buildings, No housing on 'green' land 9 leaflets given out
10	10/03/14	20.45	20m	Women's Institute	Village Hall	0	17	-	-	2	15	12	-	5	17	Too many lorries, Affordable housing, Post Office, Shop, No big housing estate, Pedestrian crossing on Main Road, A by-pass, Fracking, Industrial estate not wanted, Traffic on Smeath Lane, No wind turbines, Improved footpath width, Need more facilities for children, Small scale housing, No traveller site. 17 leaflets given out

Clarborough & Welham

Neighbourhood Plan

Events History

One off Event Record Summary

December 2013

No.	Date	Time	Length	Event	Venue	Gender		Age				Village			Total attend	Comments
						Male	Female	10-20	21-40	41-60	61 +	Clar	Wel	Other		
1	01/12	11.00	4h	Victorian Market	Church	9	19	3	3	14	10	17	2	9	28	3 possible SG members, Good idea, Food for thought, More things for kids, School parking, Use 'wasteland', village green for Welham, Rename 'Broad Gores' 25 Fliers were issue
2	04/12	16.00	3h 30	Christmas Tree Lighting	Village Hall	12	11	3	6	7	7	18	2	3	23	Good idea, Public transport, Allotments, Wildlife areas, Recreational facilities 33 fliers given out

NB This table does not include the first public event as the Steering Group were not aware at that early stage of the importance of detailed record keeping.

A list of groups involved in the Awareness Raising: November 2013 – January 2014

- Clarborough & Welham Community Association (Village Hall organisers)
- Clarborough & District Women's Institute
- Clarborough Gardening Club
- Clarborough Village Ventures
- Clarborough & Welham IT Group (3 Groups)
- Parish Council
- Parochial Church Council, St John the Baptist Church, Clarborough
- Short- Mat Bowls Group
- 1st Clarborough Scout Group
- Sure Start Group
- Table Tennis Group



November 2013

Victorian Market – St John the Baptist Church. The display and leaflets used for all awareness raising meetings.



4 December 2013

Christmas Tree Lighting Ceremony – Clarborough Village Hall



December 2013

Talking to 1 of 3 IT Groups – Clarborough Village Hall

