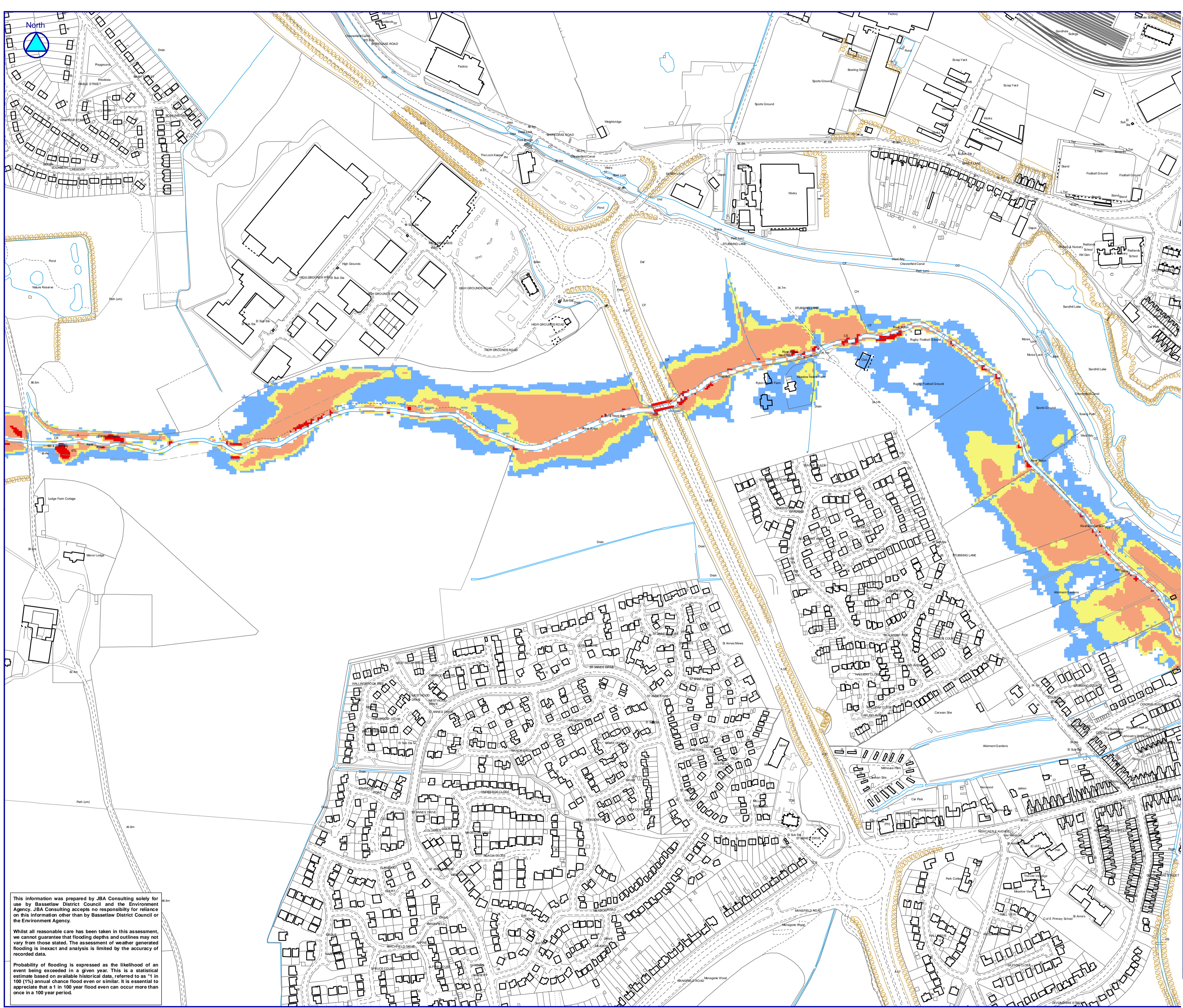
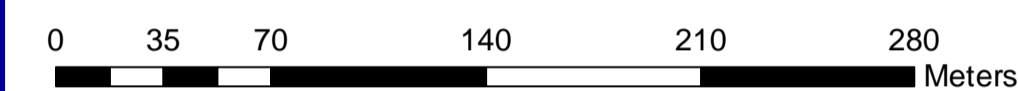


Flood hazard is mapped according to the methodology given in the DEFRA report FD2320. This methodology was clarified and affirmed in the Supplementary Note published in May 2008

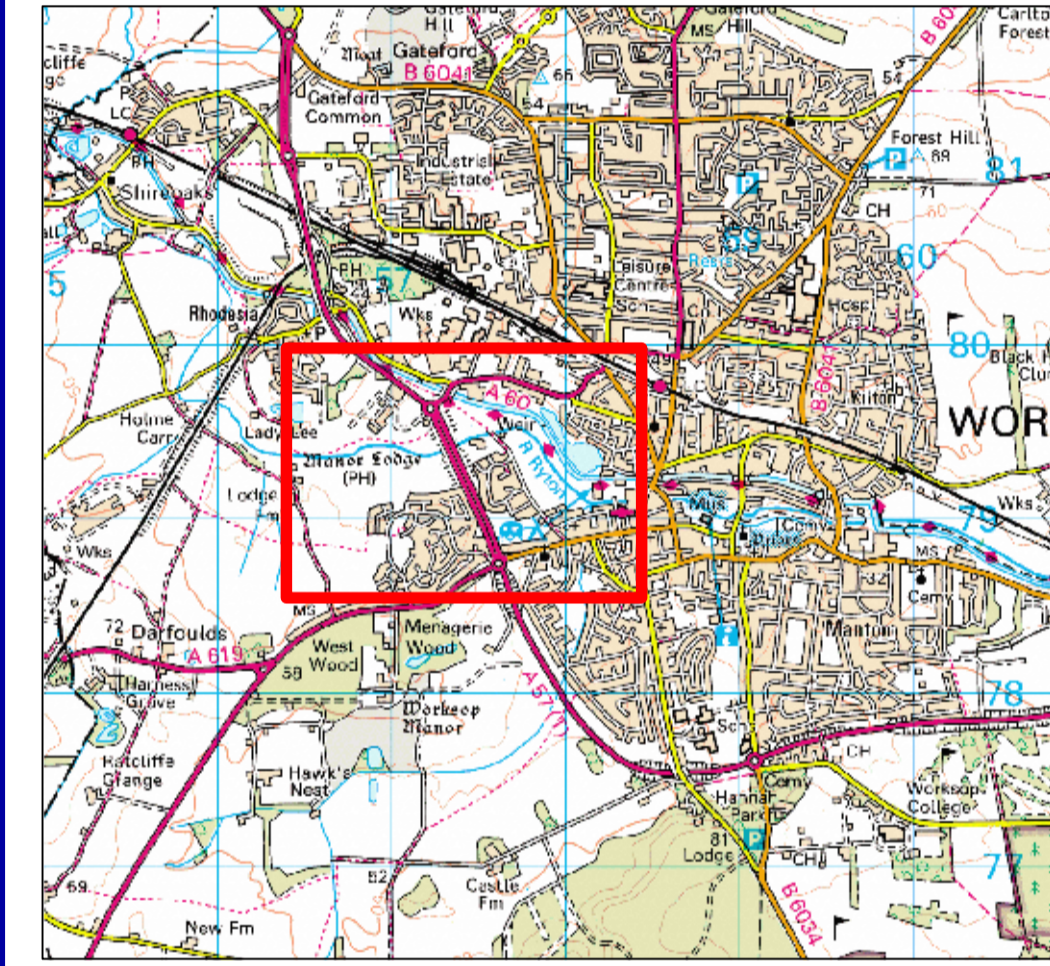


LEGEND

- Informal Defences
 - EA Maintained Defences
- Breach Hazard**
- < 0.75 Very Low Hazard
 - 0.75 - 1.25 Danger for Some
 - 1.25 - 2 Danger for Most
 - >2 Danger for All



KEYPLAN



Reproduced from Ordnance Survey mapping with the permission of Ordnance Survey on behalf of Her Majesty's Stationery Office. © Crown copyright 2009. All rights reserved.
 Unauthorised reproduction infringes Crown copyright and may lead to prosecution or civil proceedings. Bassetlaw District Council. Licence number 100019517.

Rev.	Modifications	Date	Drawn	Checked	Approved

South Barn
 Broughton Hall
 Skipton
 North Yorkshire
 BD23 3AE
 United Kingdom
www.jbaconsulting.co.uk
 +44 (0)1756 799919
 +44 (0)1756 799449
 info@jbaconsulting.co.uk

for
BASSETLAW DISTRICT COUNCIL

**STRATEGIC FLOOD RISK ASSESSMENT
 WORKSOP BREACH MAP 100 YEAR WITH CLIMATE
 CHANGE HAZARD**

This document is the property of Jeremy Benn Associates Ltd. It shall not be reproduced in whole or in part, nor disclosed to a third party, without the permission of Jeremy Benn Associates Ltd.

Scale: 1:2,500	Drawn M.HEMSWORTH (May 2009)
	Checked K.SHUTTLEWORTH
	Approved D.PETTIFER
Digital File Name: Final_Workshop_100CC breach hazard map1.mxd	

Drawing Number: 20083509 - 041	Sheet No.: 1 of 3	Status: FINAL	Rev.: Original @ A1
-----------------------------------	----------------------	------------------	------------------------

This information was prepared by JBA Consulting solely for use by Bassetlaw District Council and the Environment Agency. JBA Consulting accepts no responsibility for reliance on this information other than by Bassetlaw District Council or the Environment Agency.

Whilst all reasonable care has been taken in this assessment, we cannot guarantee that flooding depths and outlines may not vary from those stated. The assessment of weather generated flooding is inexact and analysis is limited by the accuracy of recorded data.

Probability of flooding is expressed as the likelihood of an event being exceeded in a given year. This is a statistical estimate based on available historical data, referred to as "1 in 100 (1%) annual chance flood even or similar". It is essential to appreciate that a 1 in 100 year flood even can occur more than once in a 100 year period.