

LEGEND

Bassetlaw Council Boundary

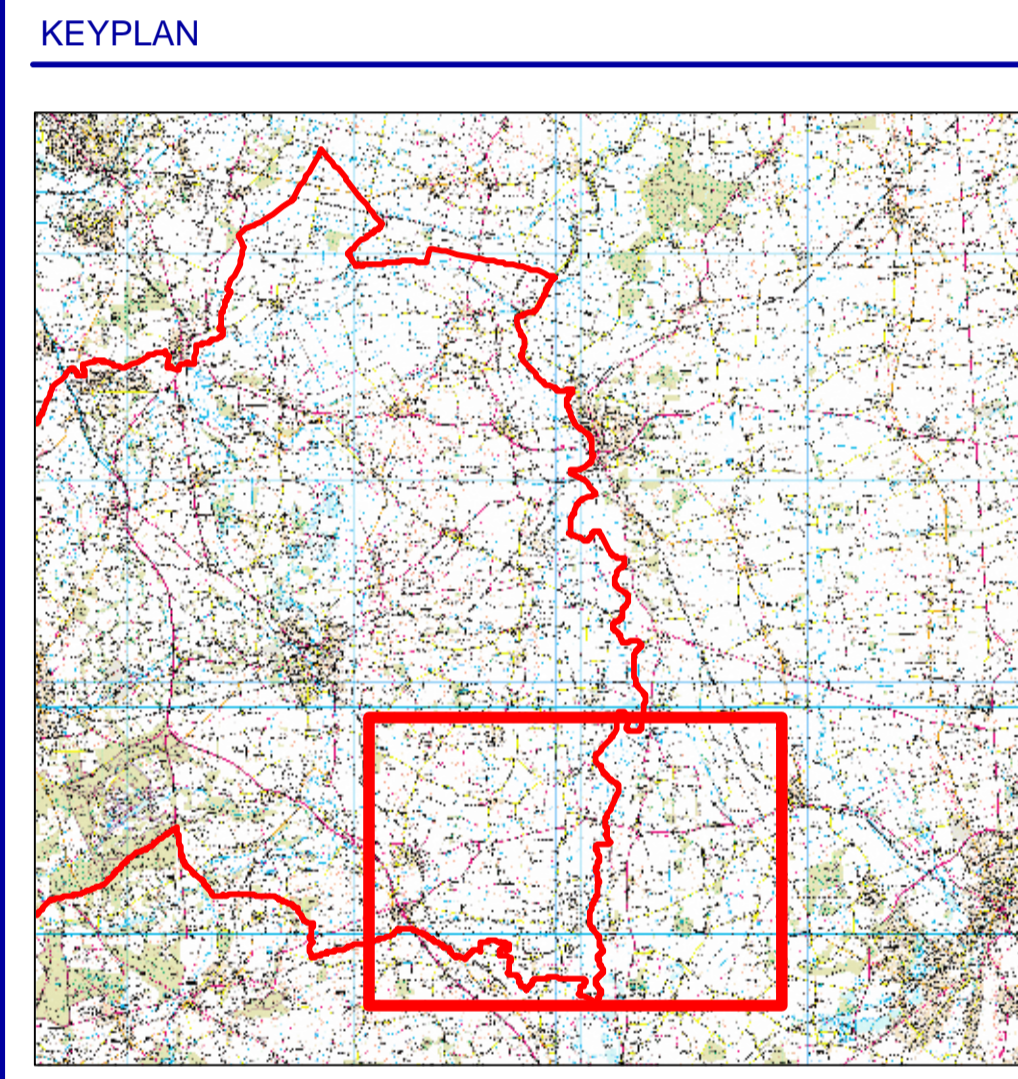
Depth of Flooding
 <VALUE>

- 0 - 0.5
- 0.5 - 1
- 1 - 1.5
- 1.5 - 2
- 2 - 2.5
- 2.5 - 3
- 3 - 3.5
- >3.5

Additional flood extent due to breaches where modelled

- Additional flood extent due to breaches where modelled

0 300 600 1,200 1,800 2,400 Meters



Reproduced from Ordnance Survey mapping with the permission of Ordnance Survey on behalf of the Controller of Her Majesty's Stationery Office. © Crown copyright 2009. All rights reserved.

Unauthorised reproduction infringes Crown copyright and may lead to prosecution or civil proceedings. Bassetlaw District Council. Licence number 100019517.

Rev.	Modifications	Date	Drawn	Checked	Approved

jba CONSULTING

South Barn
 Broughton Hall
 Skipton
 North Yorkshire
 BD23 3AE
 United Kingdom

www.jbaconsulting.co.uk
 +44 (0)1756 799919
 +44 (0)1756 799449
 info@jbaconsulting.co.uk

for

Bassetlaw District Council

**River Trent 100 yr + cc
 Flood Defence Overtopping &**

This document is the property of Jeremy Benn Associates Ltd. It shall not be reproduced in whole or in part, nor disclosed to a third party, without the permission of Jeremy Benn Associates Ltd.

Scale: 1:20,000

Drawn: MHEMSWORTH (07/09)
 Checked: KSHUTTLEWORTH
 Approved: DPETTIFER

File Name: Trent 100yrcc overtopping and breach map 3.mxd

Drawing Number: 2008s3509 - 037	Sheet No.: 3 of 3	Status: FINAL	Rev.: Original @ A1
------------------------------------	----------------------	------------------	------------------------