

**LEGEND**

Bassetlaw Council Boundary

**Depth of Flooding**

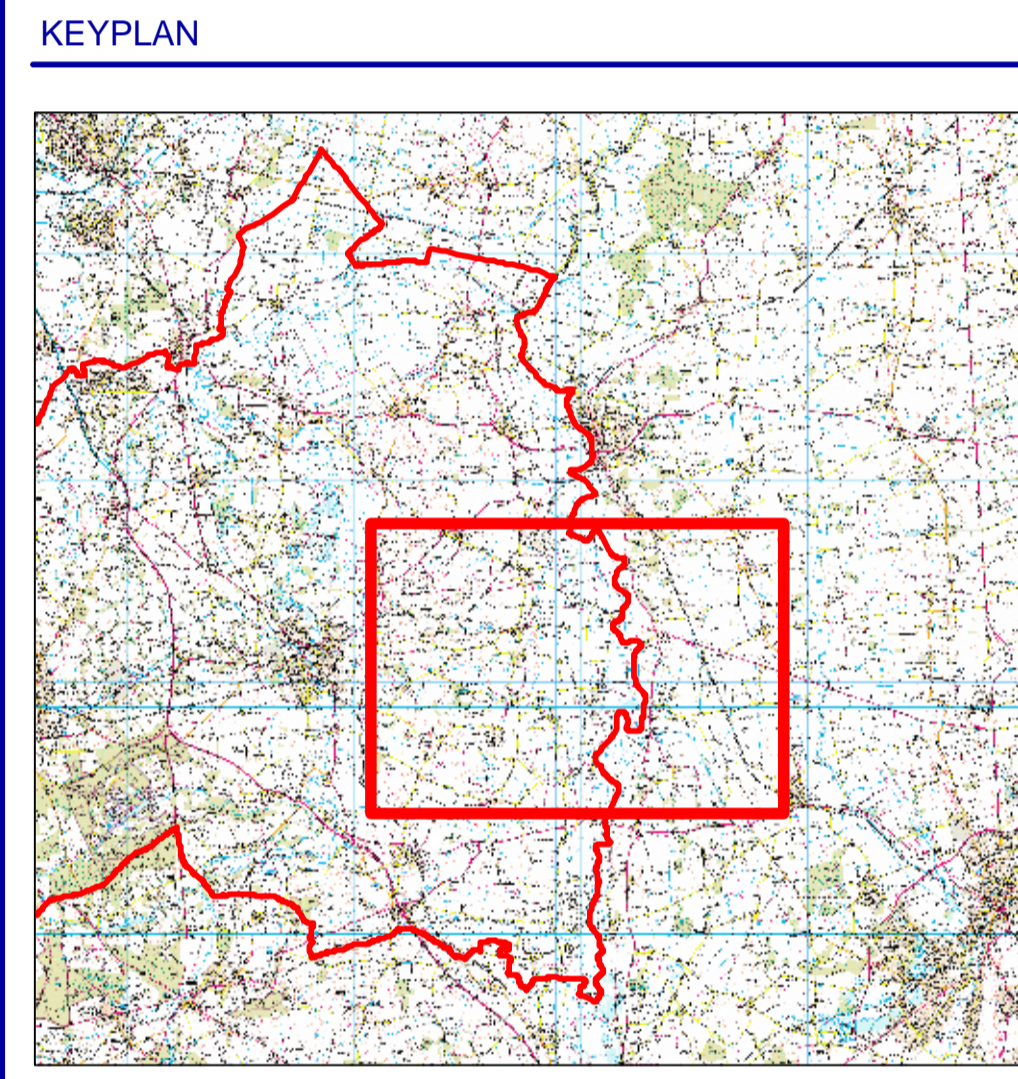
<VALUE>

- 0 - 0.5
- 0.5 - 1
- 1 - 1.5
- 1.5 - 2
- 2 - 2.5
- 2.5 - 3
- 3 - 3.5
- >3.5

**Additional flood extent due to breaches where modelled**

- 

0 300 600 1,200 1,800 2,400 Meters



Reproduced from Ordnance Survey mapping with the permission of Ordnance Survey on behalf of the Controller of Her Majesty's Stationery Office. © Crown copyright 2009. All rights reserved.

Unauthorised reproduction infringes Crown copyright and may lead to prosecution or civil proceedings. Bassetlaw District Council. Licence number: 100019517.

| Rev. | Modifications | Date | Drawn | Checked | Approved |
|------|---------------|------|-------|---------|----------|
|      |               |      |       |         |          |

**jba** CONSULTING

South Barn  
Broughton Hall  
Skepton  
North Yorkshire  
YO23 3AE  
United Kingdom

www.jbaconsulting.co.uk  
+44 (0)1756 799919  
+44 (0)1756 799449  
info@jbaconsulting.co.uk

for

**Bassetlaw District Council**

**River Trent 100 yr + cc  
Flood Defence Overtopping &**

This document is the property of Jeremy Benn Associates Ltd. It shall not be reproduced in whole or in part, nor disclosed to a third party, without the permission of Jeremy Benn Associates Ltd.

Scale: 1:20,000

Drawn: MHEMSWORTH (07/09)  
Checked: KSHUTTLEWORTH  
Approved: DPETTIFER

File Name: Trent 100yrcc overtopping and breach map 2.mxd

|                                    |                      |                  |                        |
|------------------------------------|----------------------|------------------|------------------------|
| Drawing Number:<br>2008s3509 - 036 | Sheet No.:<br>2 of 3 | Status:<br>FINAL | Rev.:<br>Original @ A1 |
|------------------------------------|----------------------|------------------|------------------------|