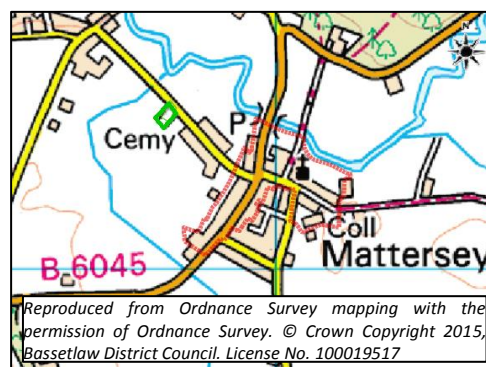


**Unregistered Park & Garden:  
Mattersey Cemetery**

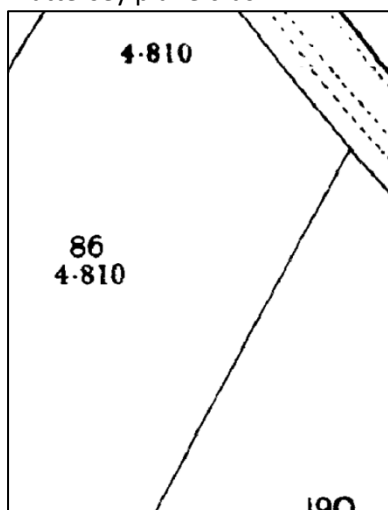
**NCC/BDC Ref:  
UPG35**

**Date(s):  
c1900**

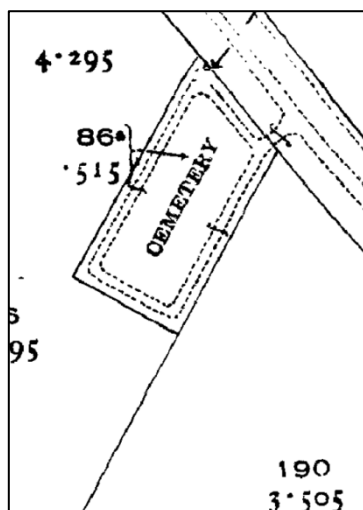


**Description & historic information:**

Cemetery opened c1900, comprising rectangular area enclosed by large hedges and trees on west, south and east sides, with recently-installed iron railings and gates on north side (adjacent to Thorpe Road). Range of significant tombstones and monuments, one of the most prominent being that of George Smithson with its distinctive carved cross (X-shape) design. Cemetery was extended to south west in the mid-20<sup>th</sup> century. Memorial bench to front of site dedicated to the victims of the 1999 Mattersey plane crash.



1899 OS Map



1920 OS Map



Aerial photograph of Mattersey Cemetery, 2007 (source: Bassetlaw District Council)

**Features of significance:**

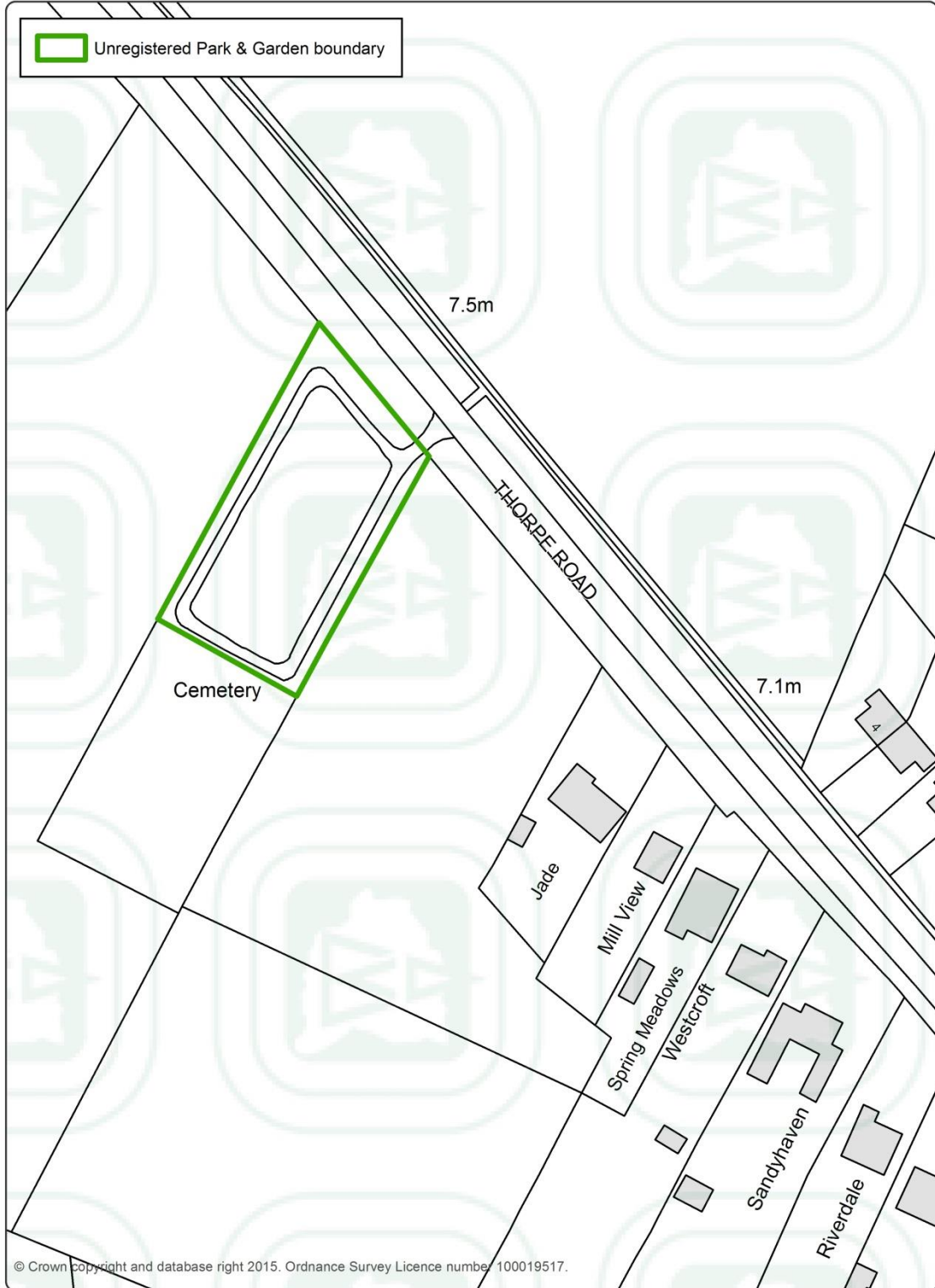
Typical late-Victorian cemetery on the edge of the settlement, enclosed by large hedges trees, containing a range of gravestones and monuments of artistic significance. Stone wheel guards at the entrance.



View into site, taken from main entrance

<b>Listed Buildings:</b>	n/a
<b>Scheduled Ancient Monuments:</b>	n/a
<b>Conservation Area:</b>	n/a
<b>Local Interest Buildings:</b>	n/a

# Mattersey Cemetery



© Crown copyright and database right 2015. Ordnance Survey Licence number 100019517.

