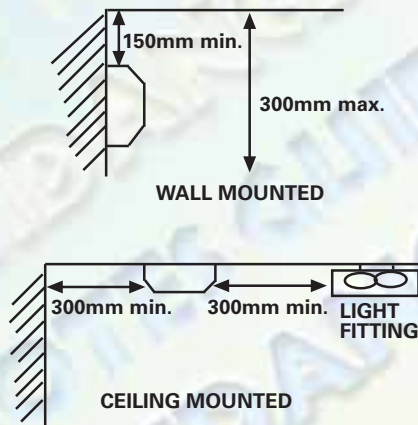


## POSITION OF ALARMS

Smoke alarms should be located in a circulation route such as the hall or landing, so that there is one in the circulation space within 7.5 metres of the door to every habitable room.

In order to operate as effectively as possible, care should be taken when positioning smoke detectors. It is recommended that they be fixed as shown in figure 3.

Figure 3



Do not fix them above a heater. Remember that a smoke detector must be easy and safe to reach for maintenance purposes.

For further advice, please contact:-  
**Building Control Unit**  
**Planning Services**  
**Bassetlaw District Council**  
**Queen's Buildings**  
**Potter Street**  
**Worksop**  
**Notts**  
**S80 2AH**

Telephone: 01909 533292  
Fax: 01909 533400

e-mail: [building.control@bassetlaw.gov.uk](mailto:building.control@bassetlaw.gov.uk)

# SMOKE DETECTORS IN DWELLINGS

**BUILDING CONTROL  
GUIDANCE NOTE**



OF A SERIES



**BASSETLAW**  
DISTRICT COUNCIL  
NORTH NOTTINGHAMSHIRE

## SMOKE DETECTORS IN DWELLINGS



Each year in the United Kingdom people are injured or die in domestic fires, many from smoke inhalation. It is widely accepted that those deaths and injuries would be significantly reduced by installing and maintaining smoke alarms within dwellings.

## PURCHASING A SMOKE ALARM

When purchasing a smoke alarm, ensure it will comply with a British Standard or the International Standard Organisation (ISO) Standard. Smoke alarms must comply with BS 5446: Part 1: 2002.

Never buy a second-hand smoke detector. Look for the BS kitemark or the CE mark, with the standards displayed.

## WHERE ARE SMOKE ALARM SYSTEMS REQUIRED?

-  All new dwellings and extensions to existing dwellings.
-  Roofspace conversions.

In all new dwellings the smoke alarms must be permanently wired to an electrical circuit which is fused separately at the distribution board or on a lighting circuit.

It is recommended that a qualified person, for example, a registered

electrician, carry out the installation of a smoke detector. Self-contained smoke alarms are not recommended for use in areas such as kitchens, garages or places where steam, condensation or fumes could give rise to false alarms. More appropriate and effective detectors are available for such situations, for instance heat detectors.

## LOCATION OF SMOKE ALARMS

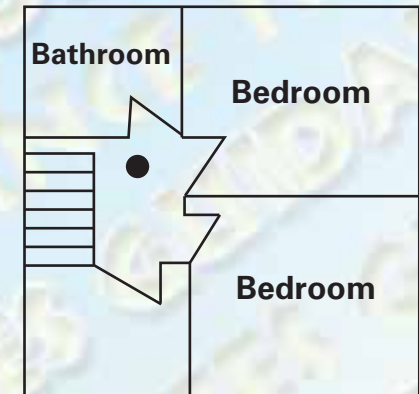
Installing detectors in the kitchen and lounge areas can provide a high standard of protection. In a single storey, two or three bedroom dwelling, a single smoke detector may be adequate if sited in the main circulation area (see figure 1). In a typical two storey dwelling, smoke detectors should be installed both at ground and at landing levels, and an audible alarm fitted near to the bedroom doors. Therefore at least two smoke alarms will be required (see figure 2).

Figure 1

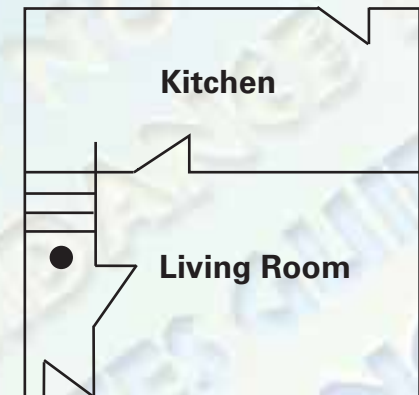


● Detector

Figure 2



1st Floor



## MAINTENANCE

The Building Control Unit has no authority to ensure that smoke alarms are maintained. Therefore, it is vitally important that you check your smoke alarm regularly. Further information may be obtained from the manufacturer's instructions relating to each device.